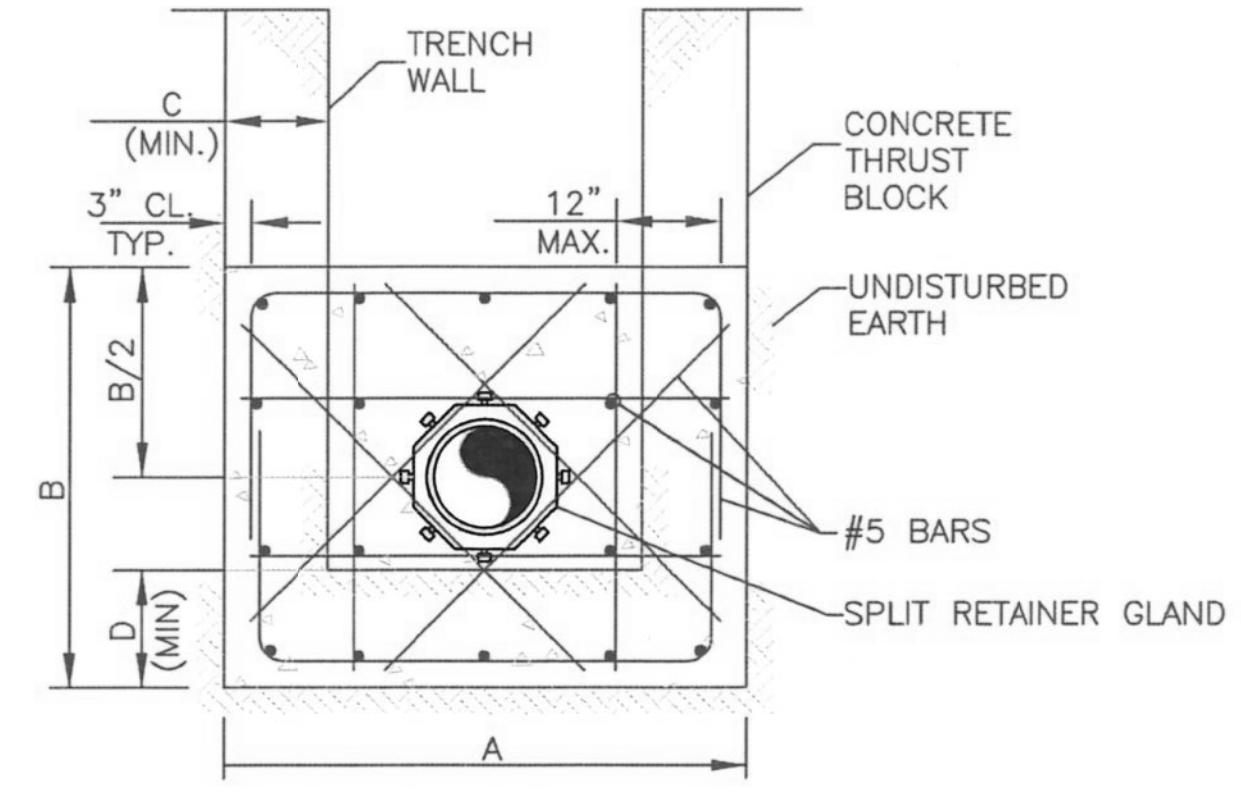


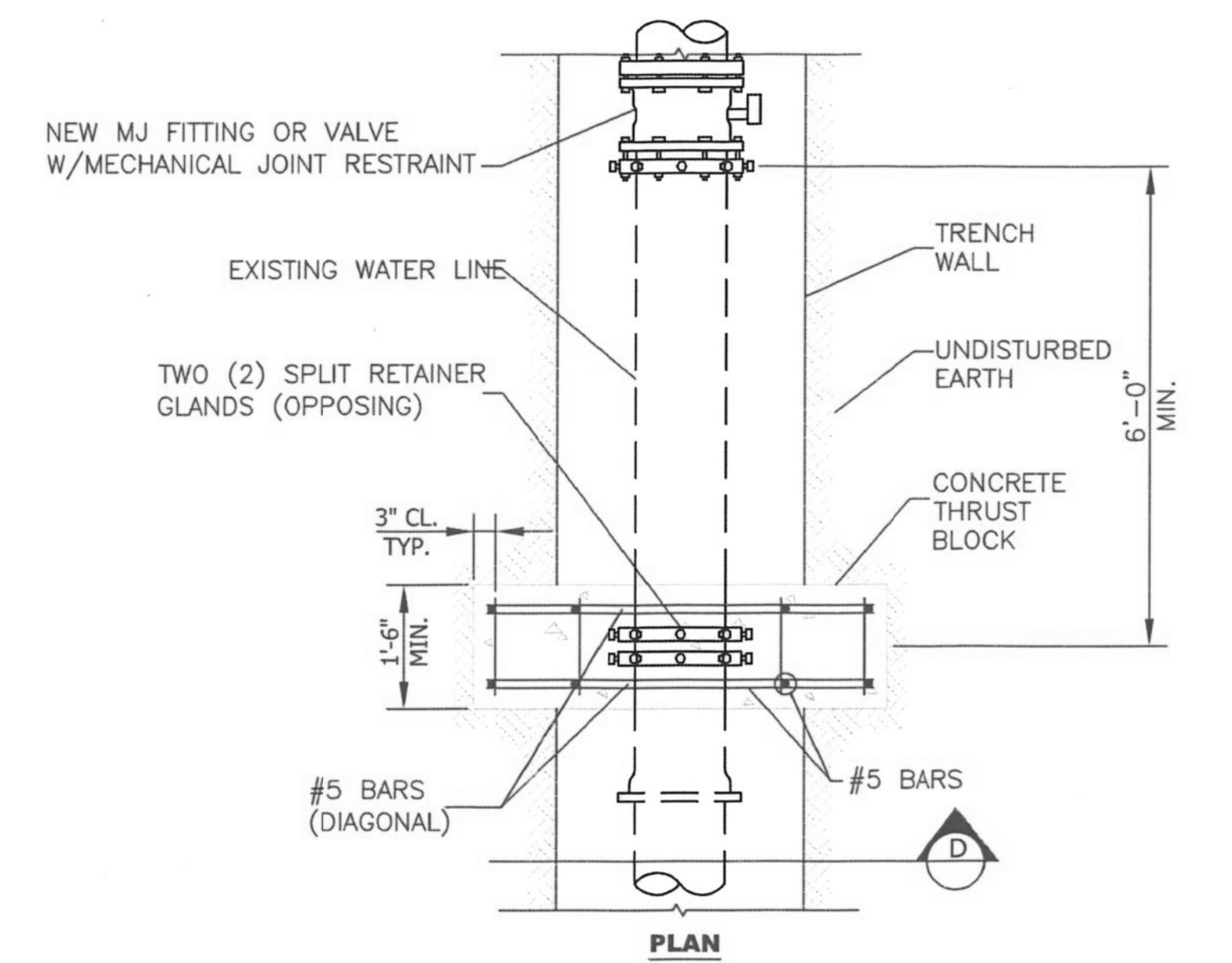
**12" AND SMALLER CONCRETE THRUST COLLAR PIPE DETAIL**  
NO SCALE

PIPE DIA.	THRUST COLLAR			
	A	B	C	D
4"	36	24	4	8
6"	46	30	8	10
8"	52	36	12	12
10"	64	42	15	14
12"	72	48	18	16

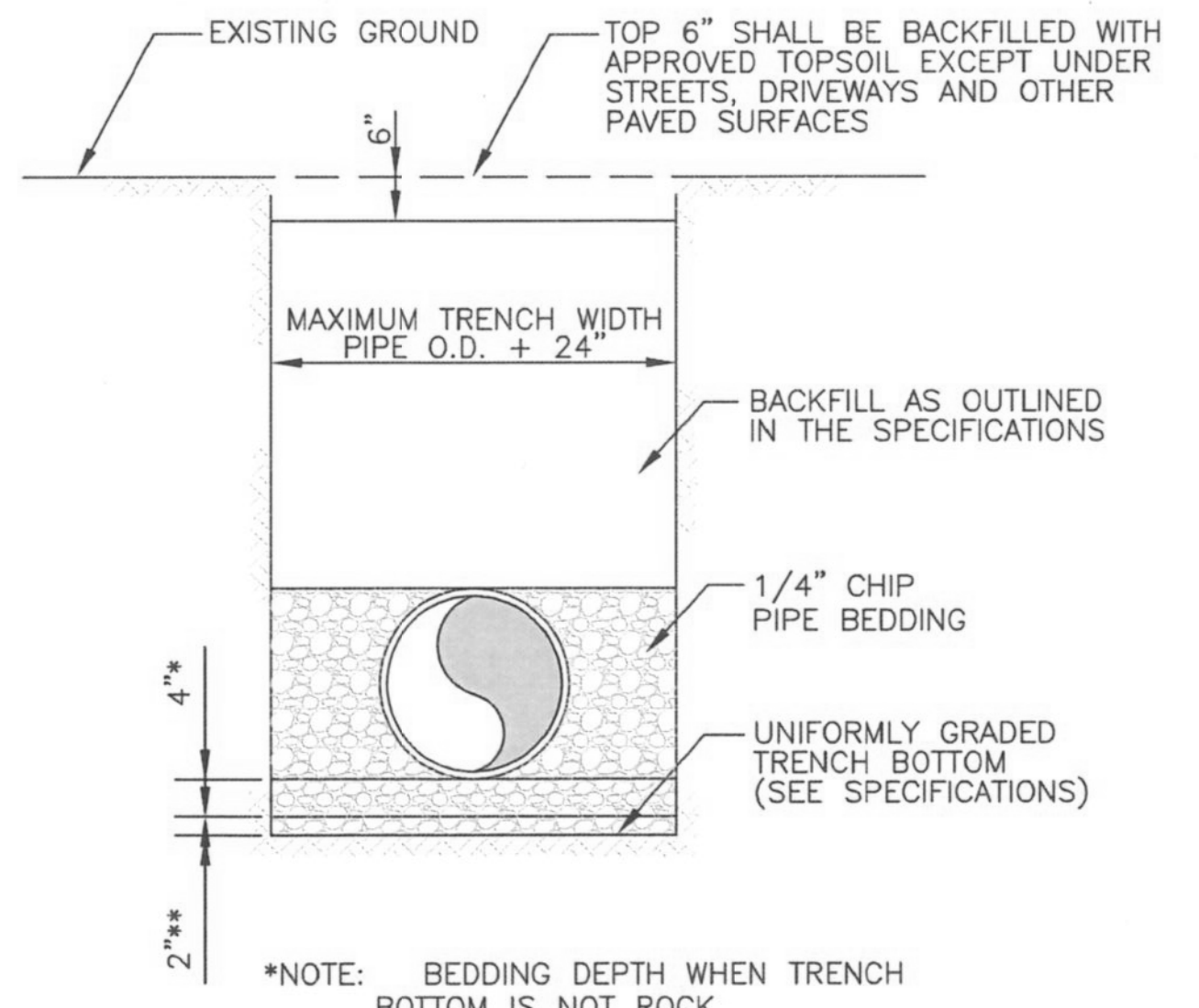
ALL DIMENSIONS ARE IN INCHES.



**SECTION D** NOTE: BARS SHOWN AT MAXIMUM SPACING. MINIMUM NUMBER AND SIZE OF BARS REQUIRED AS SHOWN.

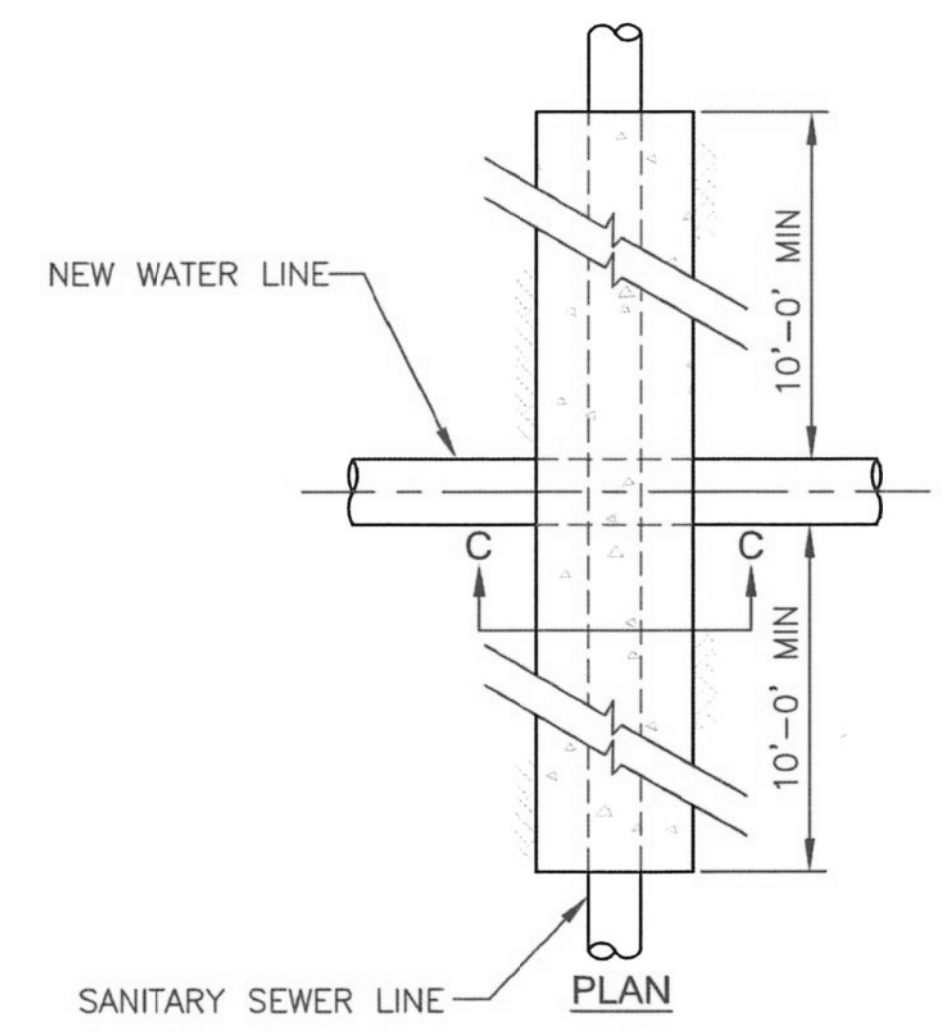


**12" AND SMALLER CONCRETE THRUST COLLAR ON EXISTING DETAIL**  
NO SCALE

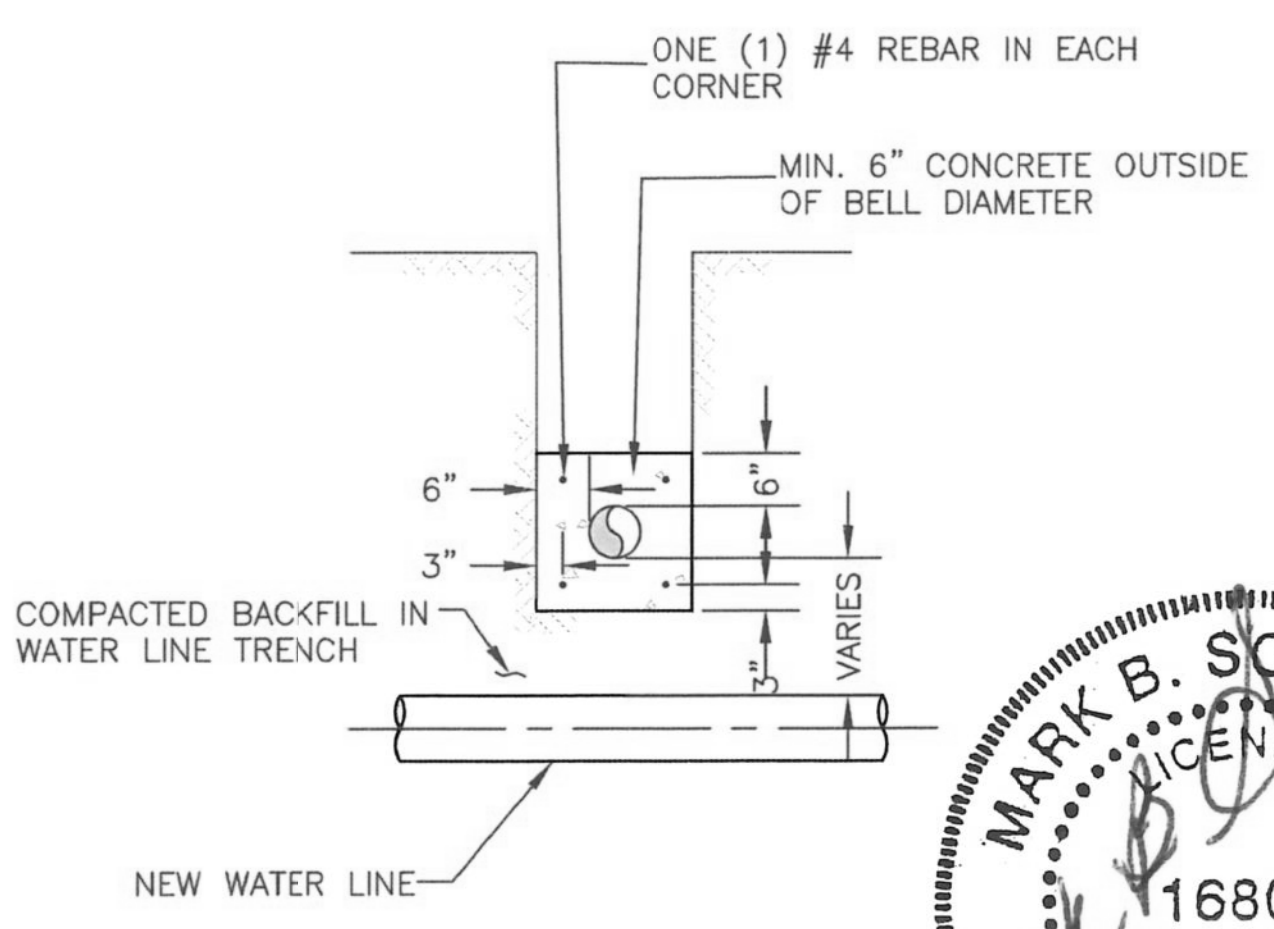


**TYPICAL TRENCH & PIPE BEDDING DETAIL**  
NO SCALE

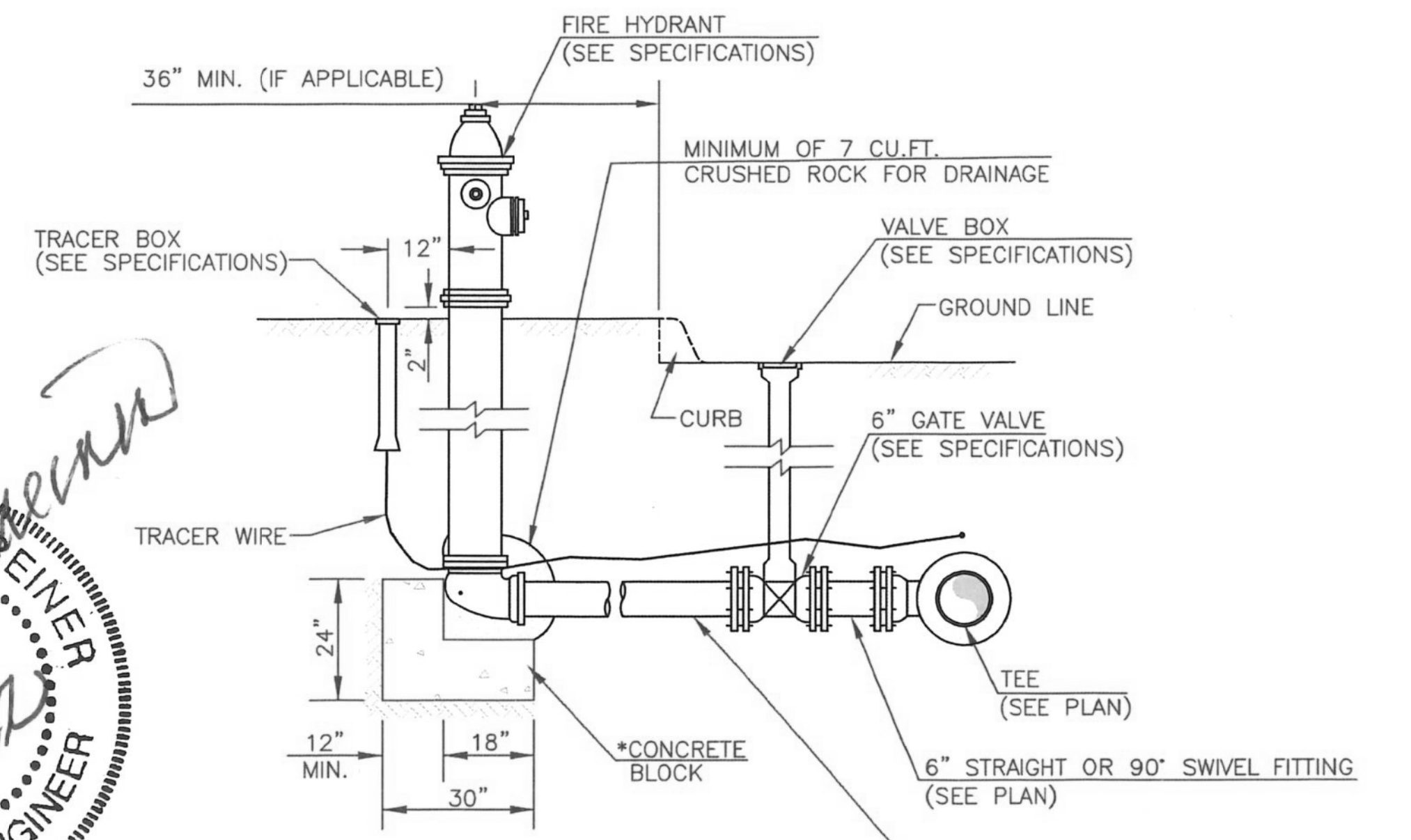
\*NOTE: BEDDING DEPTH WHEN TRENCH BOTTOM IS NOT ROCK  
\*\*NOTE: ADDITIONAL BEDDING DEPTH WHEN TRENCH BOTTOM IS ROCK



**CONCRETE ENCASEMENT SANITARY SEWER LINE CROSSING DETAIL**  
NO SCALE



**SECTION C**



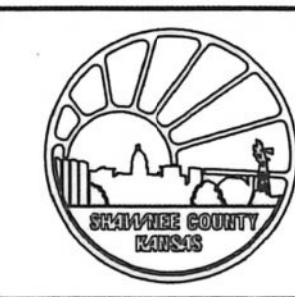
**FIRE HYDRANT SETTING**  
NO SCALE

\* NOTE: EACH ANCHOR BLOCK SHALL HAVE A MINIMUM BEARING AREA OF 5 SF



NO.	DATE	REVISION	BY:	APP'D
2	7/12/22	Updated Standard (add thrust collar detail)	MDB	MBS
1	6/9/17	Updated Standard	DHS	PB

EDITED BY: MDB  
APP'D BY: MBS



**SHAWNEE COUNTY, KANSAS**  
**PUBLIC WORKS DEPARTMENT**  
1515 NW SALINE  
TOPEKA, KS 66618  
(785) 233-7702

**TOPEKA**  
*Public Works*  
**ENGINEERING**  
620 SE MADISON ST. • 2nd Floor • TOPEKA, KS 66607  
Phone: (785) 368-3842 • Fax: (785) 368-3881

**STANDARD DETAILS**

**WATER DETAILS 2**  
(DT-024)

DATE: \_\_\_\_\_  
SHEET: \_\_\_\_\_  
PROJ.: \_\_\_\_\_