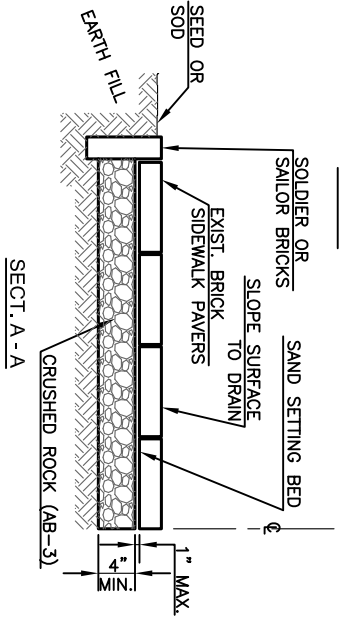
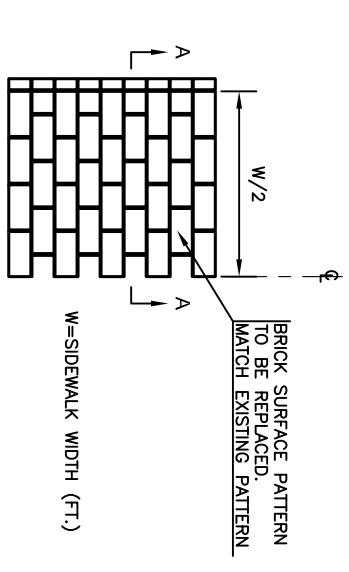


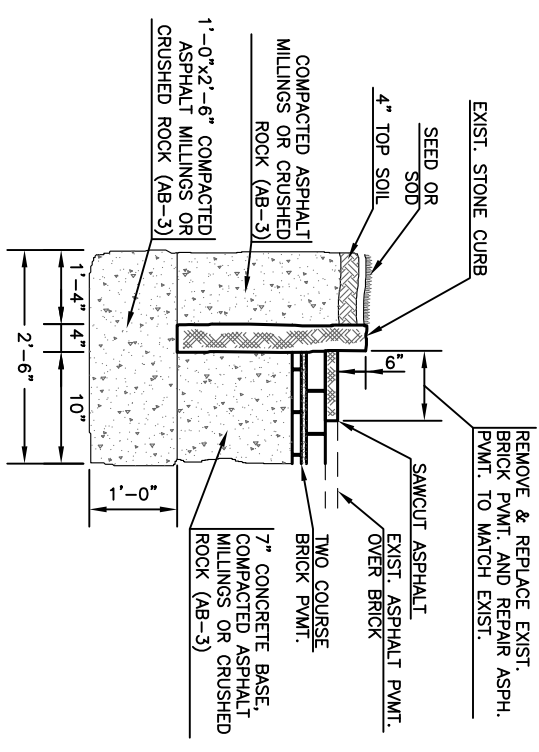
- NOTES:
1. THIS MODIFICATION IS NECESSARY ON STORM INLET GRATES THAT HAVE EITHER NO BARS THAT ARE PERPENDICULAR TO A BICYCLIST'S DIRECTION OF TRAVEL OR ONES THAT ARE PERPENDICULAR TO THE DIRECTION OF TRAVEL BUT ARE GREATER THAN 0'-6" APART.
 2. THIN METAL STRAPS SHALL BE WELDED ACROSS THE GRATE PERPENDICULAR TO THE DIRECTION OF TRAVEL WITH SPACING NO GREATER THAN 0'-6".

RETROFIT INLET GRATE FOR BICYCLIST SAFETY



- NOTES:
1. REMOVE EXISTING BRICK SIDEWALK PAVERS AND EXCAVATE TO SUBGRADE BRICK PAVEMENT THICKNESS PLUS 5 INCHES.
 2. PLACE CRUSHED ROCK (AB-3) AND COMPACT WITH A VIBRATING PLATE COMPACTOR TO A THICKNESS OF 4 INCHES (MINIMUM).
 3. PLACE CONCRETE SAND SETTING BED AND COMPACT WITH A VIBRATING PLATE COMPACTOR TO A MAXIMUM THICKNESS OF 1 INCH.
 4. REPLACE/INSTALL BRICK PAVERS AND EDGE PAVERS (SOLDIER OR SAILOR) AND SWEEP JOINTS COMPLETELY FULL WITH DRY SAND.

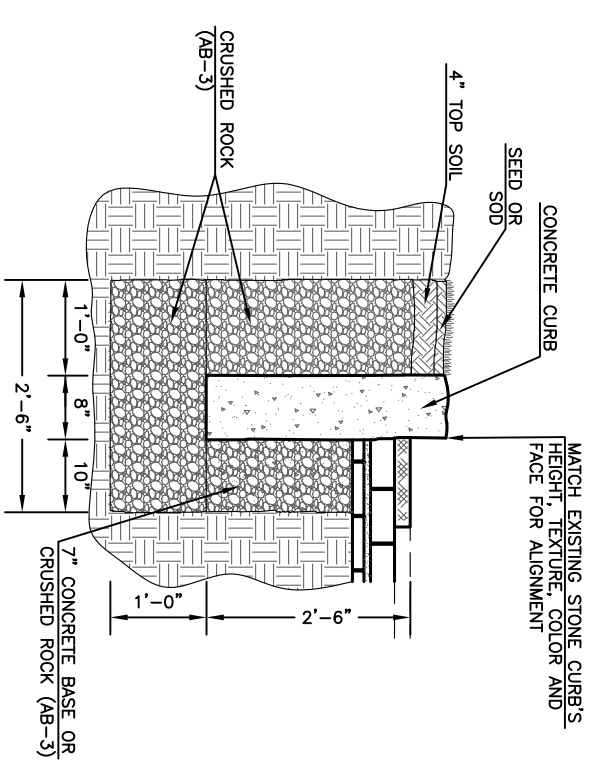
INSTALLATION/REPLACEMENT BRICK SIDEWALK PAVERS



- NOTES:
1. REMOVE EXISTING CURB - SALVAGE STONE FOR REUSE.
 2. SALVAGE BRICK PAVERS AND SIDEWALK BRICK FOR REUSE.
 3. EXCAVATE TO LIMITS SHOWN AND PLACE 1'x2'-6" COMPACTED BASE (ASPHALT MILLINGS OR CRUSHED ROCK (AB-3)).
 4. SET STONE CURBS TO LINE AT GRADE SHOWN AND STABILIZE CURBS WITH COMPACTED ASPHALT MILLINGS OR CRUSHED ROCK (AB-3). FINISHED CURB SHALL BE 6" HIGH WITH A MAXIMUM TOLERANCE OF ±1/2". CURB STONES SHALL MATCH JOINT TO JOINT ±1/2". CURB STONES SHALL BE SET IN MAXIMUM LENGTHS OF 3', MINIMUM LENGTHS OF 2', EXCEPT AT A SINGLE POINT OF CLOSURE ON SIDEWALK CUTS.
 5. REPLACE BRICK STREET PAVERS AT LOCATIONS WHERE CONCRETE CURB AND GUTTER ARE REMOVED. BRICK PAVEMENT SHALL BE RESTORED AS SHOWN ABOVE. BRICK PAVERS SHALL BE PROVIDED BY THE CONTRACTOR TO MATCH THE EXISTING PAVERS.
 6. REPAIR STREET SURFACE TO MATCH EXISTING. IF EXISTING IS AN ASPHALT OVERLAY, REPAIR TO MATCH EXISTING WITH ASPHALTIC CONCRETE IN ACCORDANCE WITH CITY STANDARD TECHNICAL SPECIFICATIONS, LATEST EDITION.

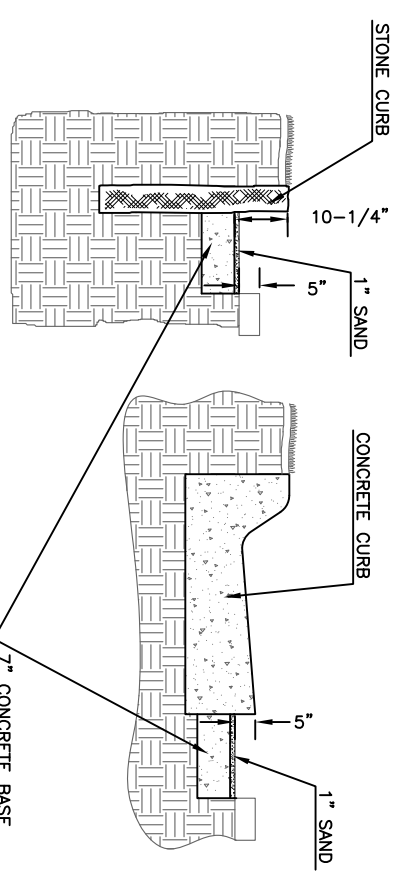
REPLACEMENT/REPAIR OF STONE CURB

TYPICAL STONE CURB DETAIL



- NOTES:
1. EXCAVATE TO LIMITS SHOWN AND PLACE 1'x2'-6" COMPACTED BASE OF CRUSHED ROCK (AB-3).
 2. CONSTRUCT JOINTS AT 20' CENTERS MAXIMUM.
 3. AFTER PLACEMENT STABILIZE BACK OF CURB WITH CRUSHED ROCK (AB-3) AND ADD PAVEMENT BASE OF 7" CONCRETE OR COMPACTED CRUSHED ROCK (AB-3).

REPLACEMENT OF STONE CURB WITH MATCHING CONCRETE CURB



- NOTES:
1. REMOVE BRICKS AND INSTALL CURB.
 2. PLACE 7" CONCRETE BASE AS SHOWN.
 3. PLACE 1" SAND AS SHOWN.
 4. RESET BRICKS.

INSTALLING CURB ADJACENT TO EXISTING BRICK PAVEMENT

NO.	DATE	REVISION	BY	APP'D.
1	May 2014	Added Retrofit Inlet Grade Detail	DHS	SB

DRAWN BY: DHS
APP'D BY: SB



SHAWNEE COUNTY, KANSAS
PUBLIC WORKS DEPARTMENT
COUNTY ENGINEER
1414 NW 44th
TOPEKA, KS 66618
(785) 233-7702



620 SE MADISON St., 2nd Floor • TOPEKA, KS 66607
Phone: (785) 383-3842 • Fax: (785) 383-3841

STANDARD DETAILS

MISCELLANEOUS DETAILS III
(01-022)

DATE: _____
SHEET: _____
PROJ.: _____