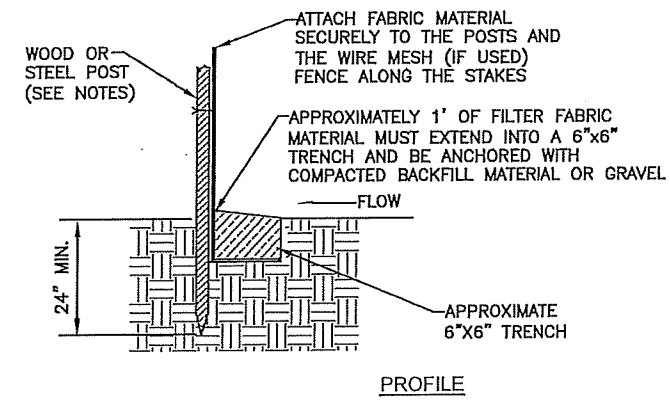


FIGURE A

Land Slope and Distance for Sediment Fence

Land Slope (percent)	Maximum Slope Distance* above Fence (feet)
Less than 2	100
2 to 5	75
5 to 10, greater than 10	50*

\*Follow manufacturers' recommendations for proper spacing.



PROFILE

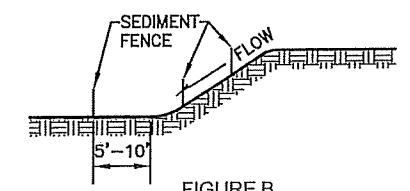
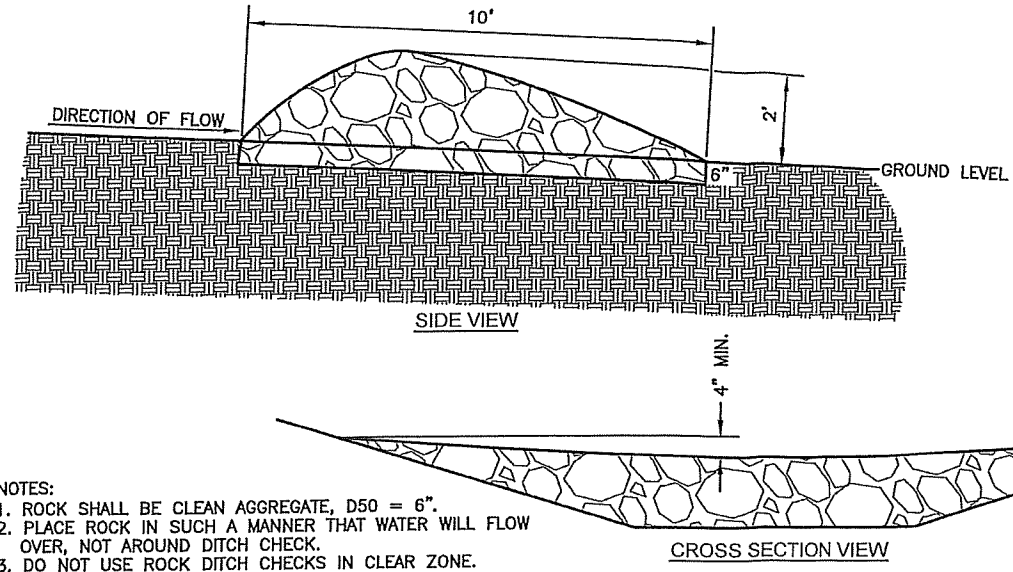


FIGURE B

- NOTES:
1. THE USE OF HAY/STRAW BALES IS THE CONTRACTOR'S OPTION. IF HAY BALES ARE USED PLACE TIGHTLY TOGETHER WITH 2"x2"x4' (MIN.) LENGTH WOOD STAKES IN OUTER 1/3 SECTIONS OF BALES. BALES SHOULD BE EMBEDDED INTO THE SOIL A MINIMUM OF 6" WITHIN A MAXIMUM DRAINAGE AREA OF 1 ACRE OR LESS.
  2. THE SEDIMENT FENCES SHALL BE PLACED ALONG CONTOUR LINES, WITH A SHORT SECTION TURNED UPGRADE (J-HOOK) AT EACH END OF THE BARRIERS TO HOLD WATER AND SEDIMENT (SEE FIGURE A).
  3. AREAS THAT CONTAIN LARGER CONCENTRATIONS OF WATER SHALL BE LIMITED TO LENGTHS OF SILT FENCES TO NO LONGER THAN 200' (SEE FIGURE A). LIMIT TO 1/4 ACRE PER 100' OF FENCE. FURTHER RESTRICT AREA BY LAND SLOPE TABLE ABOVE.
  4. AREAS SHOULD BE BROKEN UP WITH INTERIOR SEDIMENT FENCE TO MINIMIZE WATER CONCENTRATIONS AND LONG SLOPES (SEE FIGURE B).
  5. SEDIMENT FENCES INSTALLED AT TOE OF SLOPE SHALL BE PLACED 5' TO 10' AWAY (DOWNSTREAM) TO CREATE SEDIMENT STORAGE (SEE FIGURE B).
  6. DEPTH OF WATER CONCENTRATIONS SHOULD NOT EXCEED 1.5' AT ANY POINT ALONG THE FENCE.
  7. PLACE SILT FENCE ONLY WHERE OVERLAND OR SHEET FLOW DISCHARGES OCCUR.
  8. SILT FENCES SHOULD NOT BE USED IN CONCENTRATED FLOW CHANNELS, OR AS INLET PROTECTION DEVICES IF FLOODING CONDITIONS COULD OCCUR.
  9. DO NOT USE HAY OR STRAW BALES WITH WIRE TIES.
  10. WHEN SEDIMENT REACHES 1/2 HEIGHT OF SILT FENCE OR SIMILAR CONTROL MEASURE, THE CONTRACTOR SHALL REMOVE THE SEDIMENT.

**SILT FENCE**



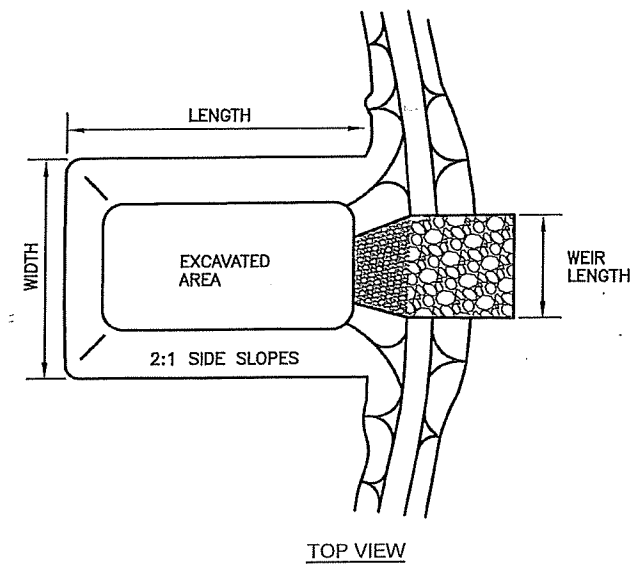
TEMPORARY ROCK DITCH CHECK SPACING

DITCH & SLOPE (%)	SPACING INTERVAL (FEET)
5.0	60
6.0	50
7.0	43
8.0	36
9.0	33
10.0	29

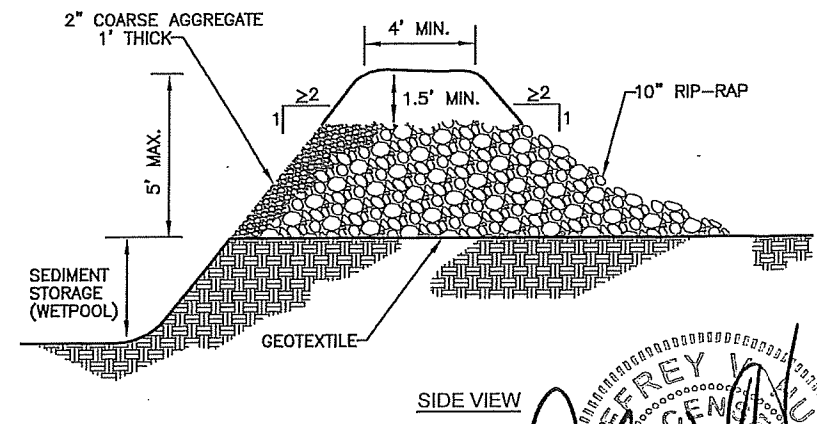
THIS SPACING IS TO BE USED FOR ROCK DITCH CHECKS ONLY.

- NOTES:
1. ROCK SHALL BE CLEAN AGGREGATE, D50 = 6".
  2. PLACE ROCK IN SUCH A MANNER THAT WATER WILL FLOW OVER, NOT AROUND DITCH CHECK.
  3. DO NOT USE ROCK DITCH CHECKS IN CLEAR ZONE.
  4. AGGREGATE EXCAVATED ON SITE MAY BE USED AS AN ALTERNATE TO THE 6" ROCK, IF APPROVED BY THE ENGINEER.

**ROCK DITCH CHECK**

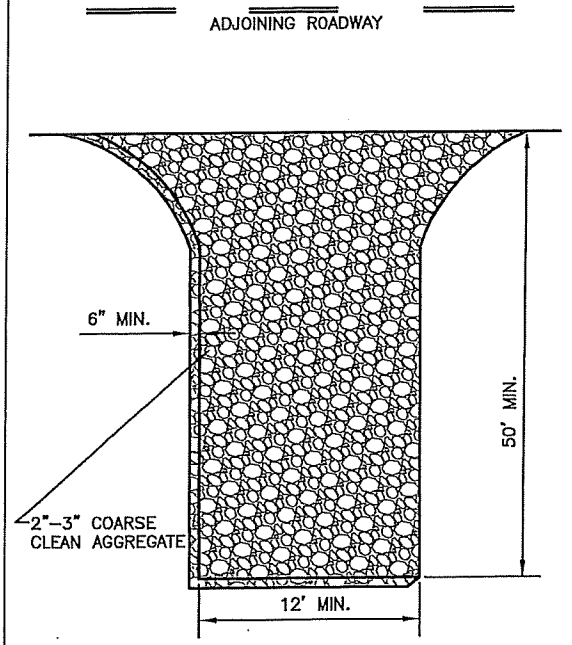


TOP VIEW



SIDE VIEW

**SEDIMENT BASIN**



- NOTES:
1. GEOTEXTILE FABRIC MAY BE USED AS AN UNDERLINER IN WET CONDITIONS TO PROVIDE STABILITY.
  2. PROVIDE SUFFICIENT WIDTH, LENGTH & TURNING RADIUS FOR CONSTRUCTION VEHICLES ENTERING & EXITING SITE.
  3. MUST BE MAINTAINED IN A CONDITION WHICH WILL PREVENT TRACKING OR DIRECT FLOW OF SEDIMENT ON TO STREETS AND KEEP THE ENTRANCE EFFECTIVE.
  4. PROPERLY GRADE TO PREVENT RUNOFF FROM LEAVING CONSTRUCTION SITE THROUGH ENTRANCE/EXIT.
  5. DO NOT ALLOW ROCK SPACES TO BE FILLED IN WITH DIRT - ROCKS MUST BE KEPT LOOSE.

**CONSTRUCTION ENTRANCE**

**EROSION & POLLUTION CONTROL**  
 SILT FENCE, SEDIMENT BASIN,  
 CONSTRUCTION ENTRANCE,  
 AND ROCK DITCH CHECK  
 (DT-021)

DATE: \_\_\_\_\_  
 SHEET: \_\_\_\_\_  
 PROJ.: \_\_\_\_\_

NO.	DATE	REVISION	BY	APP'D
3	May 2015	Updated Notes & Added Rock Ditch Check	DHS	JDH
2	March 2013	Repl. Sed. Trap & Added Land Slope Table	DHS	JDH
1	Dec. 2009	Modified Stake Depth & Spacing	DHS	JDH

DRAWN BY: DHS  
 APP'D BY: JDH



**SHAWNEE COUNTY, KANSAS**  
 PUBLIC WORKS DEPARTMENT  
 COUNTY ENGINEER  
 1515 NW SALINE  
 TOPEKA, KS 66618  
 (785) 233-7702

**TOPEKA**  
 Public Works  
 ENGINEERING  
 620 SE MADISON St. • 2nd Floor • TOPEKA, KS 66607  
 Phone: (785) 368-3642 • Fax: (785) 368-3681

STANDARD DETAILS

