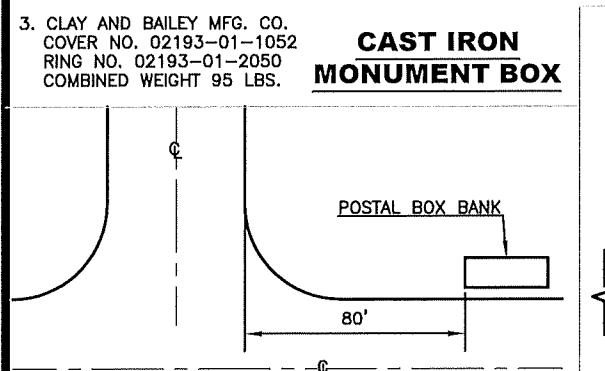


CAST IRON MONUMENT BOX

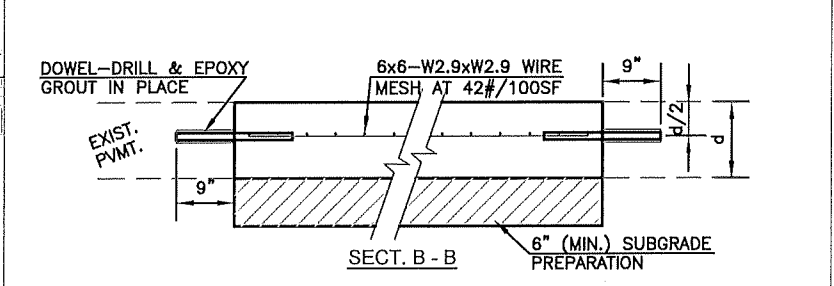
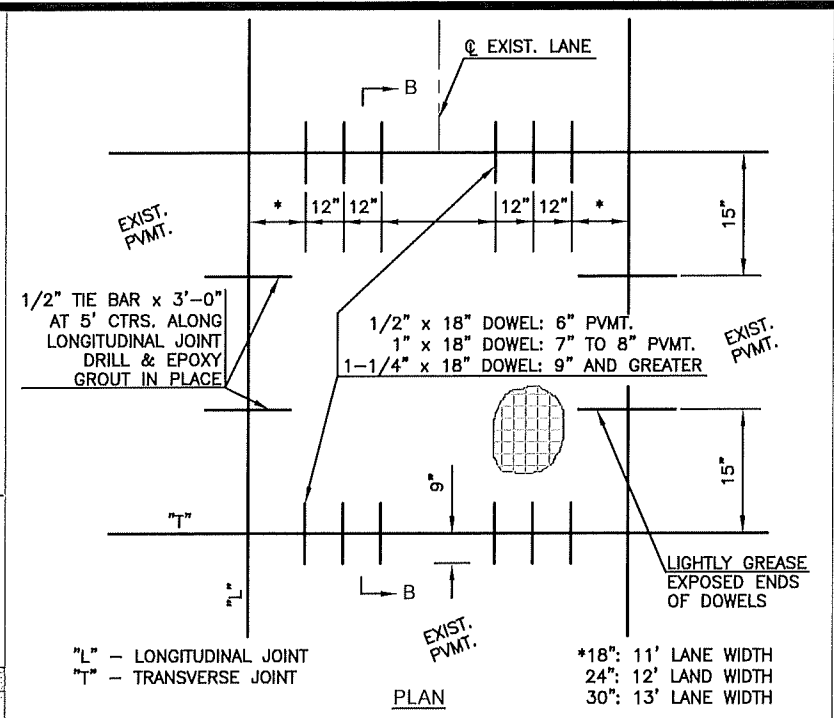
NOTES:

1. THE TOP OF THE MONUMENTATION WITHIN THE MONUMENT BOX WILL BE BELOW THE BOTTOM OF THE MONUMENT BOX AND PAVEMENT ELEVATION TO ACCOMMODATE FREE PAVEMENT MOVEMENT WITHOUT DISPLACEMENT OF THE MONUMENT. ALL MONUMENTS IN CONCRETE WILL BE PLACED IN SUCH A WAY THAT THE TOP OF CONCRETE IS A MINIMUM OF 3" CLEAR OF THE BOTTOM OF THE MONUMENT BOX AND PAVEMENT, TO ALLOW DRAINAGE PERCOLATION OF SURFACE SEEPAGE AWAY FROM THE BOX.
2. ALTERNATE INSTALLATION: 24" DIAMETER CORE DRILL CENTERED AROUND THE MONUMENT WITH #4 REBAR HOOPS MAINTAINING A 3" CLEARANCE FROM MONUMENT AND EDGE OF CONCRETE COLLAR.
3. CLAY AND BAILEY MFG. CO. COVER NO. 02193-01-1052 RING NO. 02193-01-2050 COMBINED WEIGHT 95 LBS.



POSTAL BOX BANKS

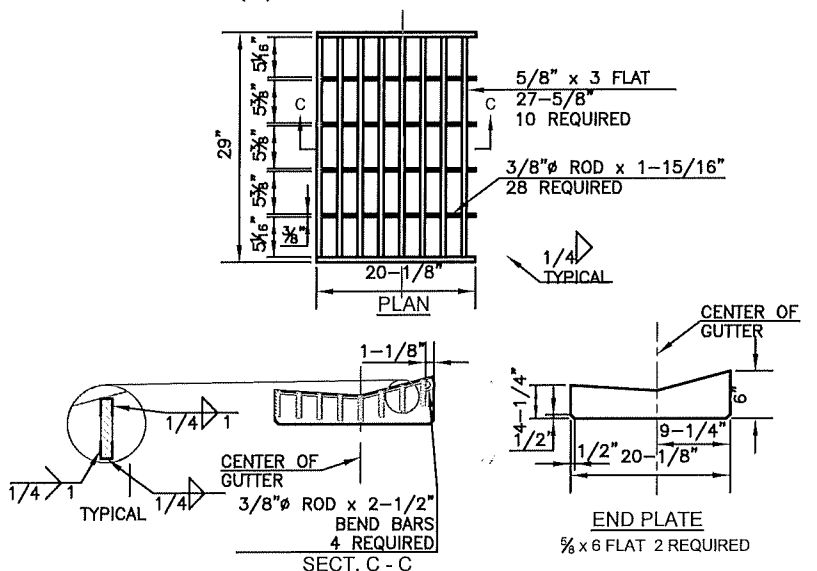
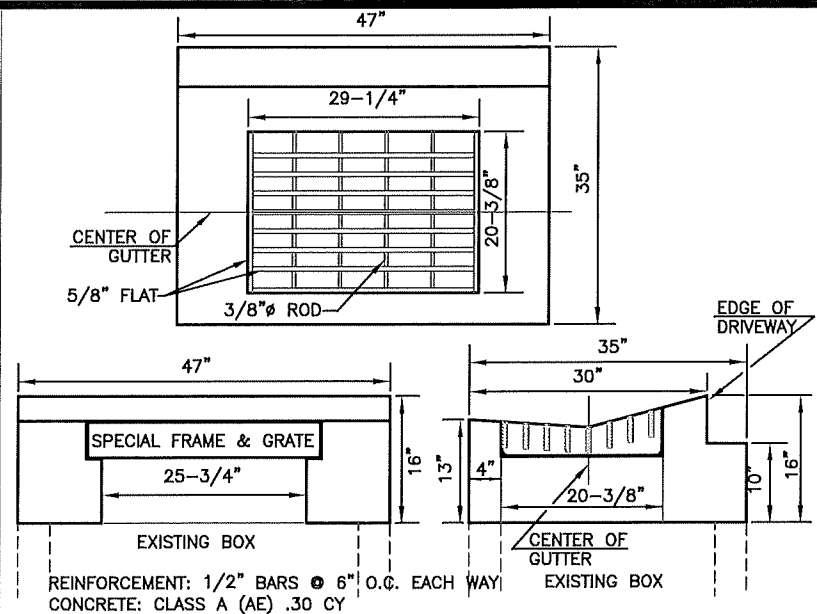
NOTE: WHERE BANKS OR GROUPS OF POSTAL BANKS ARE TO BE INSTALLED, THEY SHALL BE A MINIMUM OF EIGHTY (80) FEET FROM THE INTERSECTION BACK OF CURB.



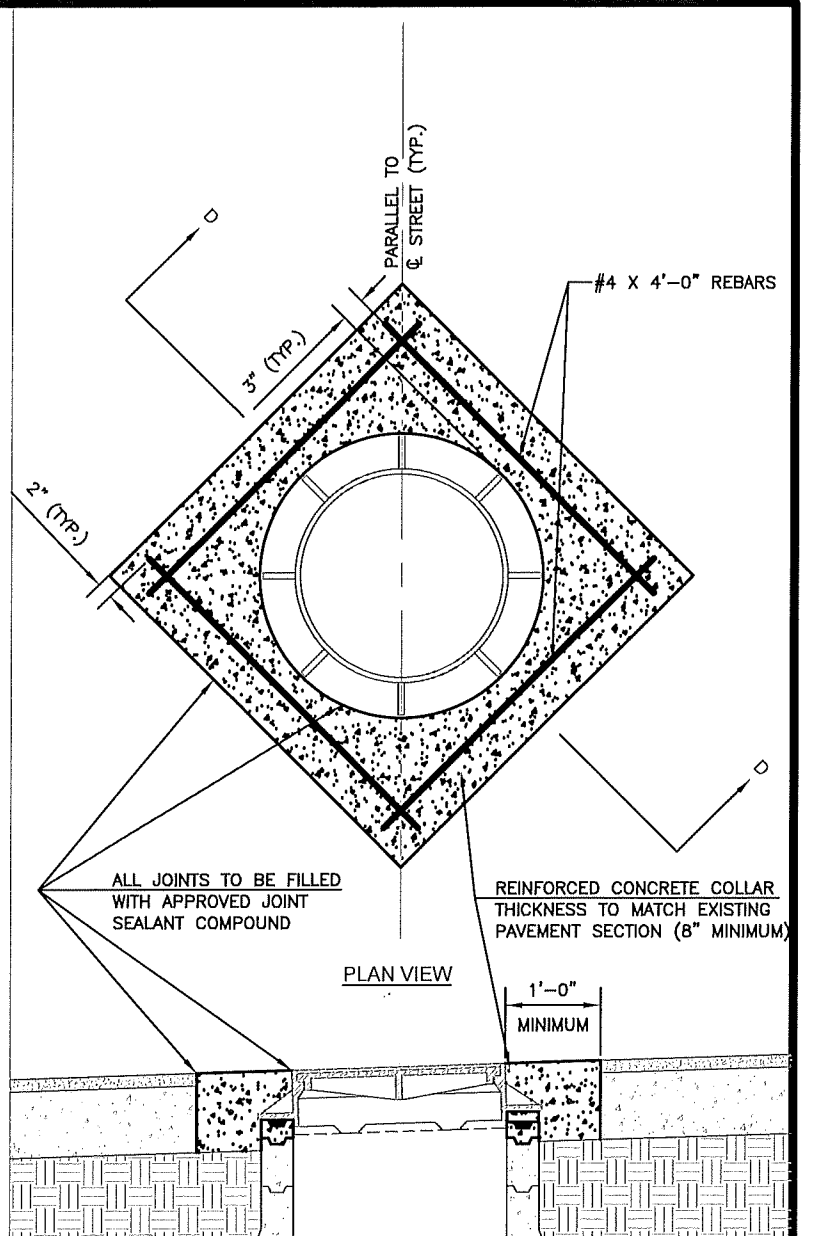
FULL PANEL REPAIR & UTILITY CUTS FOR CONCRETE PAVEMENT

NOTES:

1. ALL MATERIAL AND METHODS SHALL BE IN ACCORDANCE WITH CITY OF TOPEKA STANDARD TECHNICAL SPECIFICATIONS, LATEST EDITION.
2. DOWEL HOLE SIZE = O.D. OF DOWEL + 1/8"
3. EPOXY GROUTING PER SEC. 830, KDOT STANDARD SPECIFICATIONS FOR STATE ROAD & BRIDGE CONSTRUCTION, LATEST EDITION.



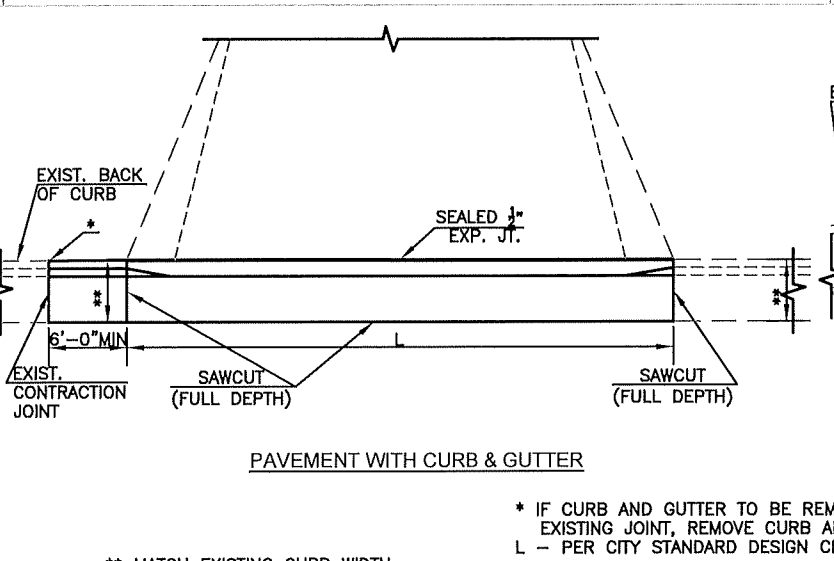
SPECIAL II-P GRATE TOP



MANHOLE ADJUSTMENT

NOTES:

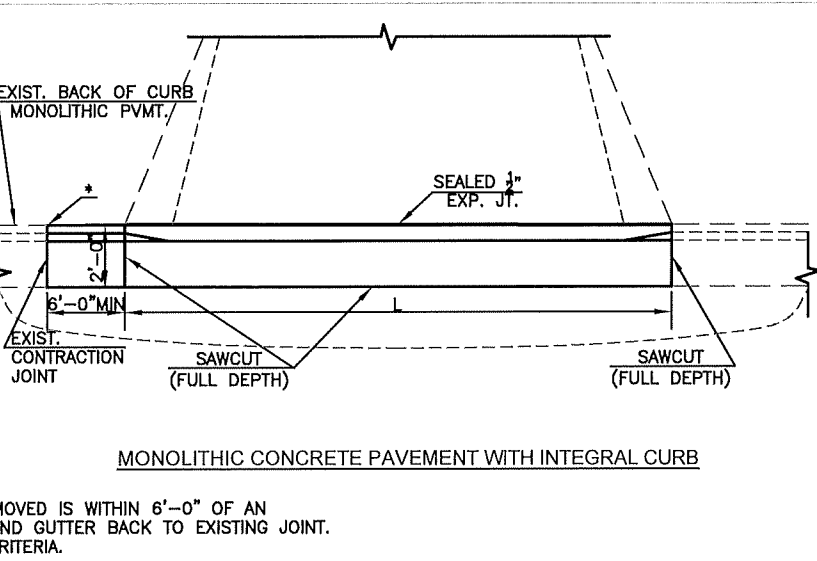
1. PAVEMENT SHALL BE REMOVED BY FULL DEPTH SAW CUTTING WHILE PROTECTING NEW PAVEMENT.
2. THE ORIENTATION OF THE REINFORCED CONCRETE COLLAR SHALL BE AS SHOWN OR FIELD DETERMINED BY ENGINEER.
3. ADJUST MANHOLE RING TO MATCH PAVEMENT CROSS SLOPE USING APPROVED CONCRETE MANHOLE GRADE ADJUSTMENT RINGS AND CONCRETE BLOCKS OR APPROVED HIGH-DENSITY POLYETHYLENE MANHOLE ADJUSTMENT RINGS.
4. SET MANHOLE RING WITH 2 RINGS OF 3/4" PREFORMED MASTIC SEALANT.
5. ALL TIME AND MATERIAL NECESSARY TO PERFORM THIS WORK SHALL BE CONSIDERED SUBSIDIARY TO THE BID ITEM "MANHOLE ADJUSTMENT".



CURB CUT/REMOVAL FOR NEW RESIDENTIAL DRIVE APPROACH

** MATCH EXISTING CURB WIDTH.

* IF CURB AND GUTTER TO BE REMOVED IS WITHIN 6'-0" OF AN EXISTING JOINT, REMOVE CURB AND GUTTER BACK TO EXISTING JOINT.
L - PER CITY STANDARD DESIGN CRITERIA.



MONOLITHIC CONCRETE PAVEMENT WITH INTEGRAL CURB

NO.	DATE	REVISION	BY	APP'D
8	Oct. 2020	Updated cast iron monument box	JOT BDF	
7	Oct. 2017	Updated cast iron monument box	DHS JPS	
6	March 2013	Added grease to dowels & bar size to "	DHS SB	
5	Jan. 2013	Added Manhole Adjustment detail	DHS SB	
4	Jan. 2013	Removed Brick S/W & Stone Curb details	DHS SB	
3	Dec. 2012	Changed to tie bar from dowel	DHS SB	
2	Dec. 2009	Dowel size & # pvmt range and curb det.	DHS SB	

SHAWNEE COUNTY, KANSAS
PUBLIC WORKS DEPARTMENT
1515 NW SALINE
TOPEKA, KS 66616
(785) 233-7702

TOPEKA
Public Works
ENGINEERING
620 SE MADISON ST. 1st Floor + TOPEKA, KS 66607
Phone: (785) 368-3842 + Fax: (785) 368-3881

STANDARD DETAILS

MISCELLANEOUS DETAILS I
(DT-017)

DATE: Month Year
SHEET: X of X
PROJ: X-XXXXX.XX