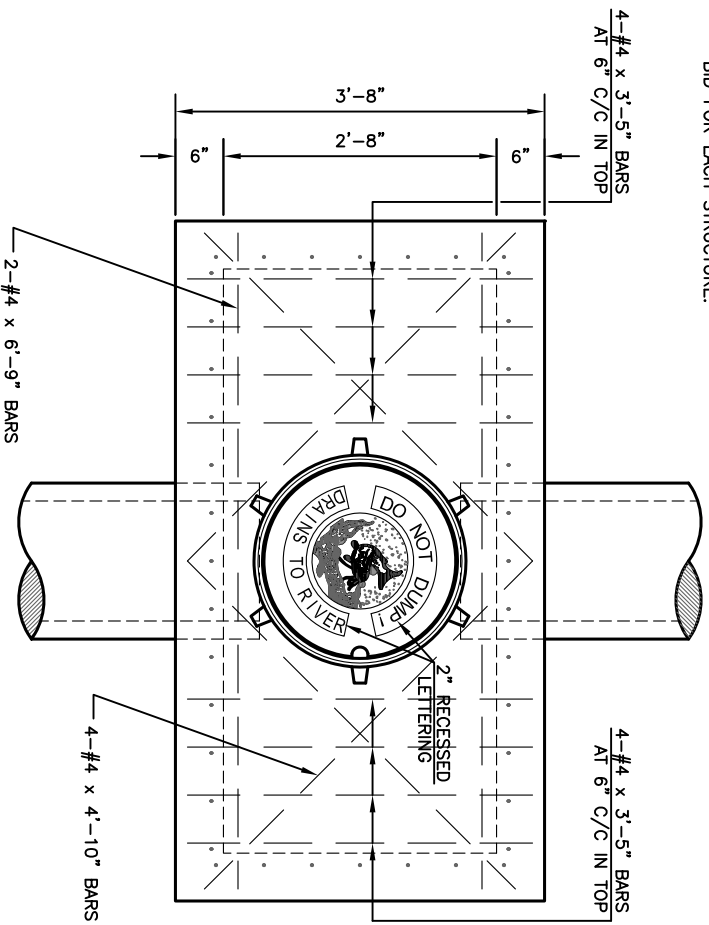
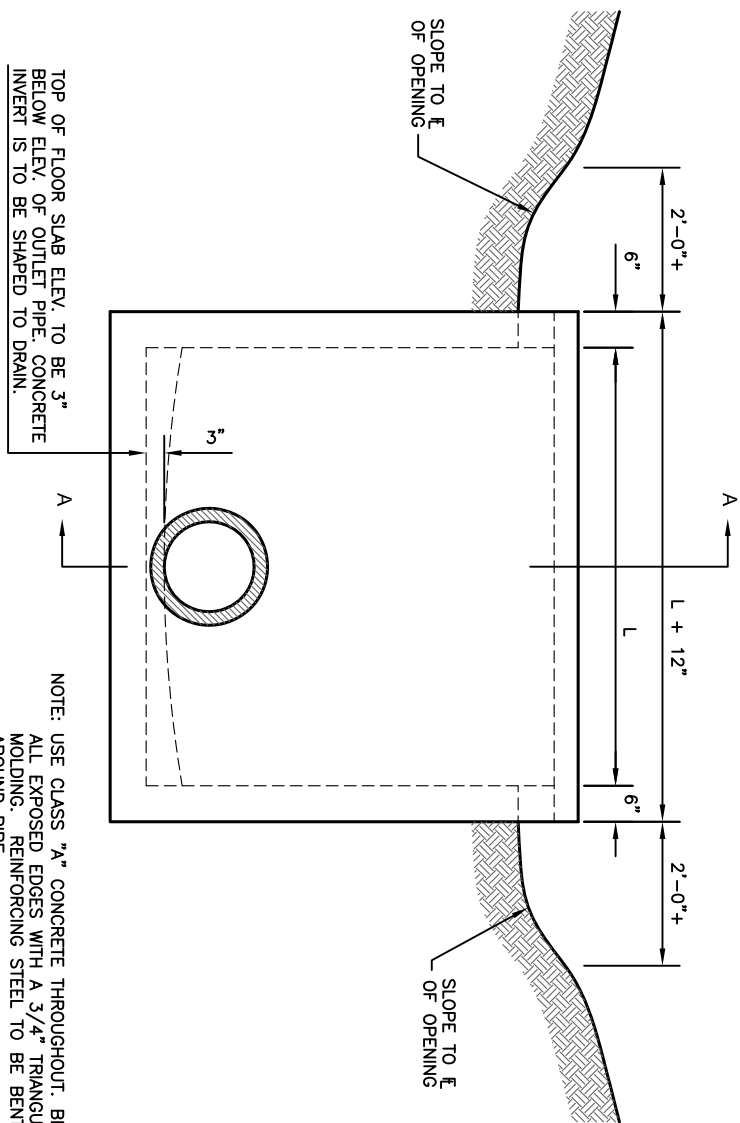


NOTE: REINF. STEEL BARS IN DITCH INLET SHALL BE INCLUDED IN THE PRICE BID FOR EACH STRUCTURE.

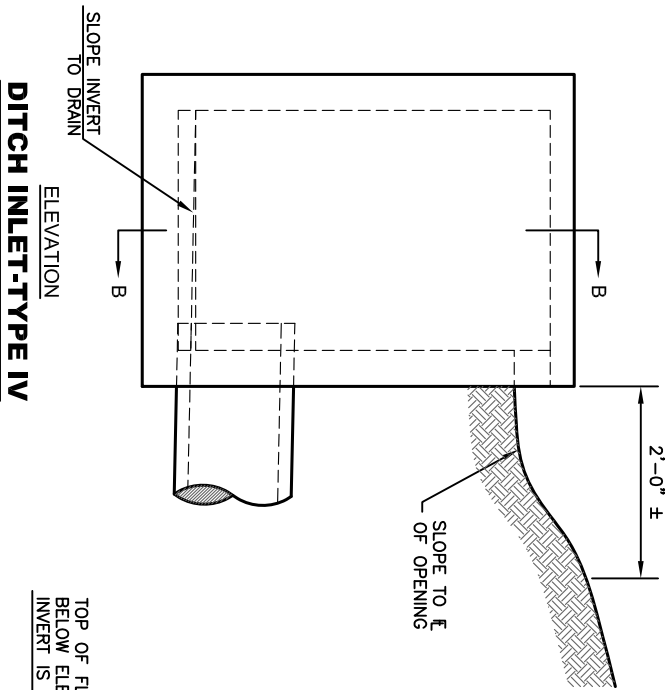
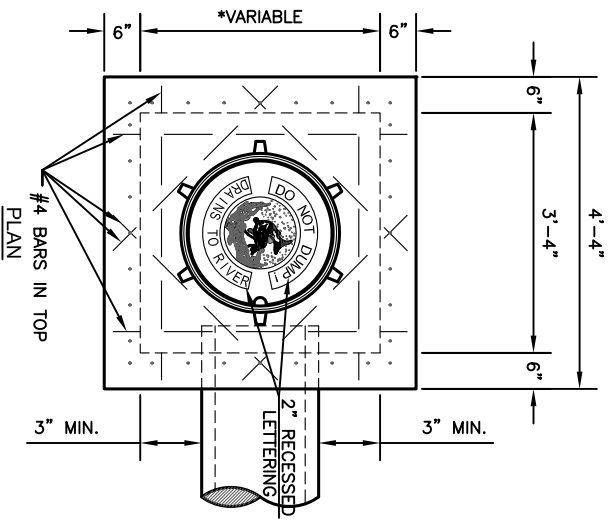
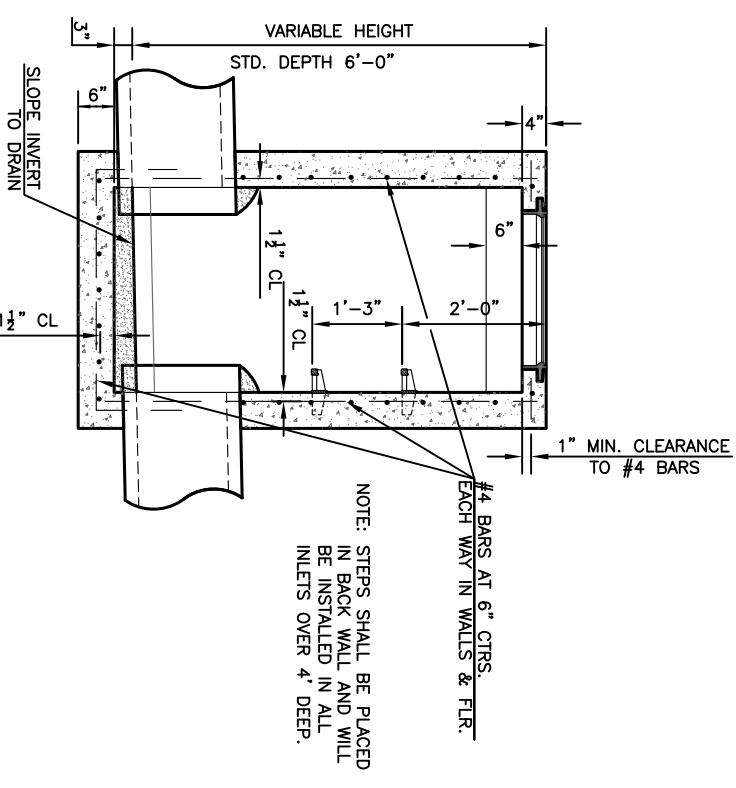


NOTE: MAXIMUM PIPE INTRUSION INTO STRUCTURE IS 6". UNIQUE STRUCTURES MIGHT REQUIRE ADDITIONAL ANALYSIS. ENGINEER APPROVAL REQUIRED.



DITCH INLET-TYPE I

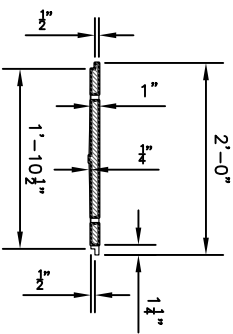
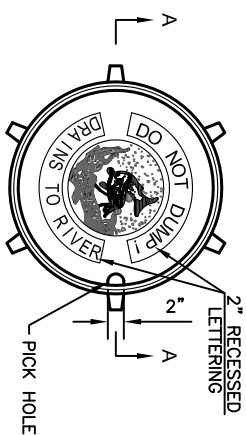
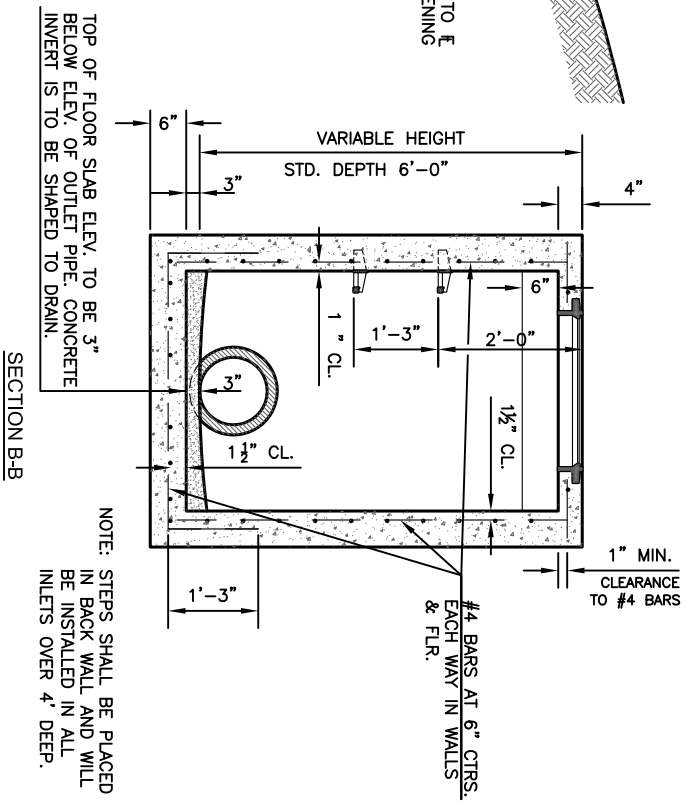
NOTE: USE CLASS "A" CONCRETE THROUGHOUT. BEVEL ALL EXPOSED EDGES WITH A 3/4" TRIANGULAR MOLDING. REINFORCING STEEL TO BE BENT AROUND PIPE.



DITCH INLET-TYPE IV

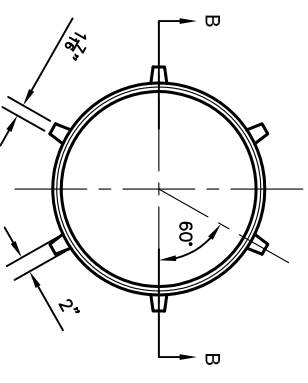
NOTE: MAXIMUM PIPE INTRUSION INTO STRUCTURE IS 6". UNIQUE STRUCTURES MIGHT REQUIRE ADDITIONAL ANALYSIS. ENGINEER APPROVAL REQUIRED.

NOTE: USE CLASS "A" CONCRETE THROUGHOUT. BEVEL ALL EXPOSED EDGES WITH A 3/4" TRIANGULAR MOLDING. REINFORCING STEEL TO BE BENT AROUND PIPE. REINFORCING STEEL BARS IN DITCH INLET SHALL BE INCLUDED IN THE PRICE BID FOR EACH STRUCTURE. 6" MAX. CLEAR SPACING BETWEEN #4 BARS AND FACE OF WALL. * PLACE ADDITIONAL BARS WHEN REQ'D.



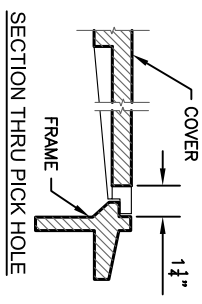
COVER CASTING

WT. 85 lbs.



FRAME CASTING

WT. 60 lbs.



COMBINED WEIGHT 145 LBS.

NO.	DATE:	REVISION	BY:	APP'D.
2	June 2018	Ext pipe into boxes, Added max intr node	DHS	JMH
1	Feb. 2008	Mod. MH Covers	DHS	SS

DRAWN BY: *lm/lmc*
APP'D BY: *R. Chandy*



SHAWNEE COUNTY, KANSAS
PUBLIC WORKS DEPARTMENT
1515 NW 54th
TOPEKA, KS 66618
(785) 233-7702



620 SE MADISON St., 2nd Floor • TOPEKA, KS 66607
Phone: (785) 388-3842 • Fax: (785) 388-3881

STANDARD DETAILS

DITCH INLET

(DT-012)

DATE:	_____
SHEET:	_____
PROJ.:	_____