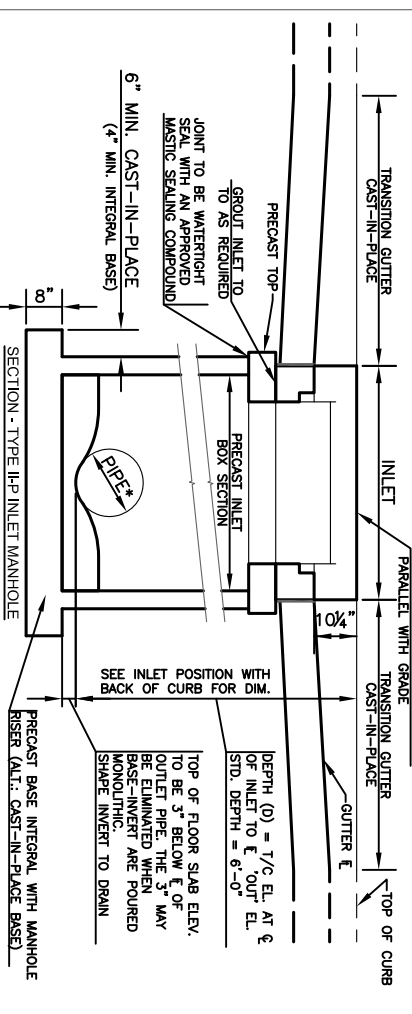
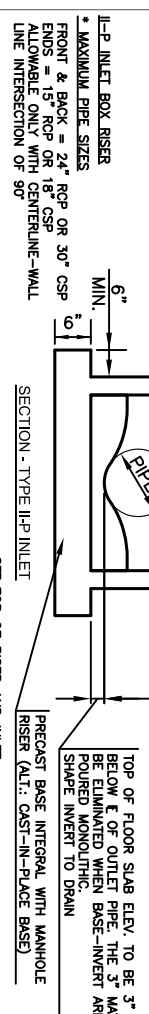
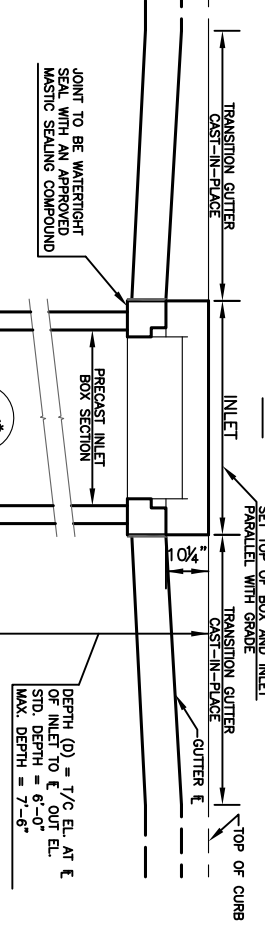
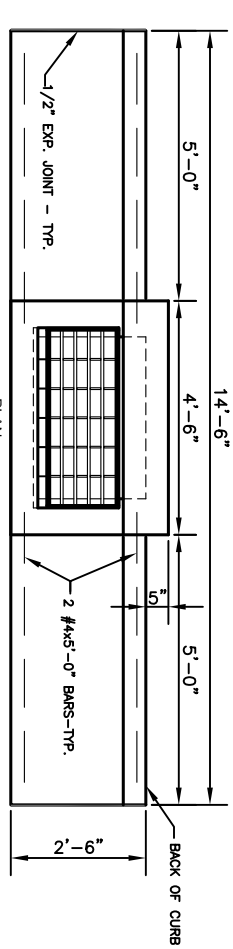


INLET POSITIONS WITH BACK OF CURB

CURB AND GUTTER BETWEEN THESE LIMITS TO BE INCLUDED IN THE PRICE BID FOR INLET



INLET DETAILS
 NOTE: THE BOTTOM SECTION OF ALL CAST-IN-PLACE MANHOLES AND PRECAST MANHOLES NOT BUILT MONOLITHICALLY WITH THE BASE SHALL BE SET INTO A STEEL REINFORCED (#4 @ 12" E.W.) CONCRETE BASE (4,000 PSI) A MINIMUM OF 4 INCHES. IN THIS CASE, THE BASE THICKNESS SHALL BE INCREASED BY 4 INCHES.

PRECAST INLET BOX RISER

- PRECAST INLET MANHOLE TOP NOTES**
1. ALL REINFORCING SHALL BE #4 BARS EXCEPT AS NOTED
 2. ALL CLEARANCE SHALL BE 1-1/2" EXCEPT AS NOTED
- PRECAST INLET MANHOLE RISER NOTES**
1. ALL MANHOLE RISER SECTIONS SHALL CONFORM TO A.S.T.M. 478-80.
 2. ALL MANHOLE CONSTRUCTION SHALL BE WATERTIGHT.
 3. STEPS SHALL BE PS1-PF OR PS2-PF AS MANUFACTURED BY M.A. INDUSTRIES INC. OF APPROVED EQUAL AND SHALL BE PLACED TO PROVIDE EASY ACCESS TO MANHOLE AT 16" O.C. MAX. WHILE MAINTAINING VERT. ALIGNMENT.

PRECAST INLET MANHOLE RISER & TOP

148 LB. PEDESTRIAN GRATE

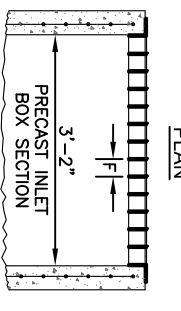
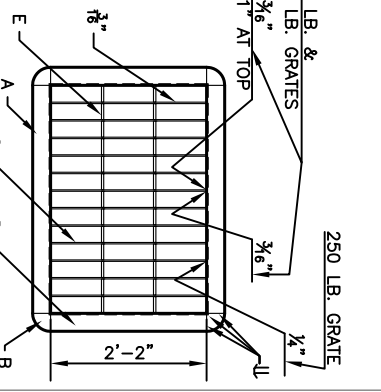
A	2 EA. #3x3x3'-1 1/2"
B	4 EA. #3x3x0'-3"
C	25 EA. #3x2'-1 1/8"
D	2 EA. #3x3x2'-1 1/8"
E	52 EA. #3x3x2'-1 1/8"
F	1-16" O.C.

250 LB. TRAFFIC GRATE

A	2 EA. #3x3x3'-1 1/2"
B	4 EA. #3x3x0'-3"
C	12 EA. #3x2'-1 1/8"
D	2 EA. #3x3x2'-1"
E	26 EA. #3x3x2'-1"
F	2 1/2" O.C.

130 LB. YARD GRATE

A	2 EA. #3x3x3'-1 1/2"
B	4 EA. #3x3x0'-3"
C	12 EA. #3x2'-1 1/8"
D	2 EA. #3x3x2'-1 1/8"
E	26 EA. #3x3x2'-1 1/8"
F	2 1/2" O.C.

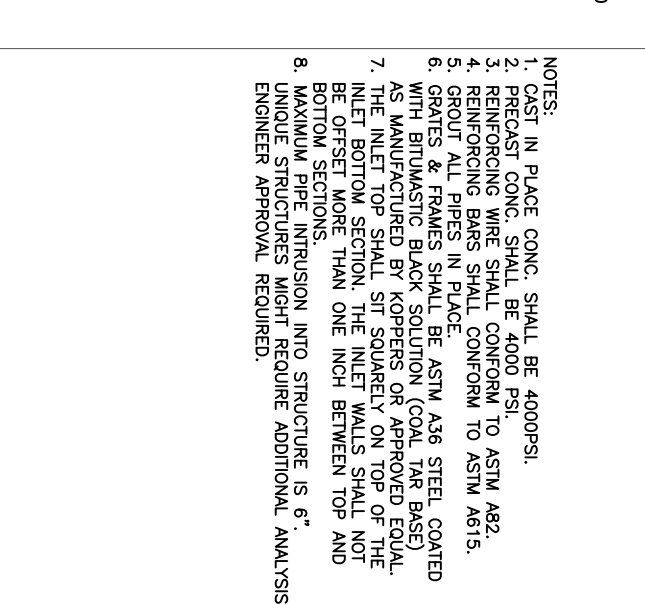
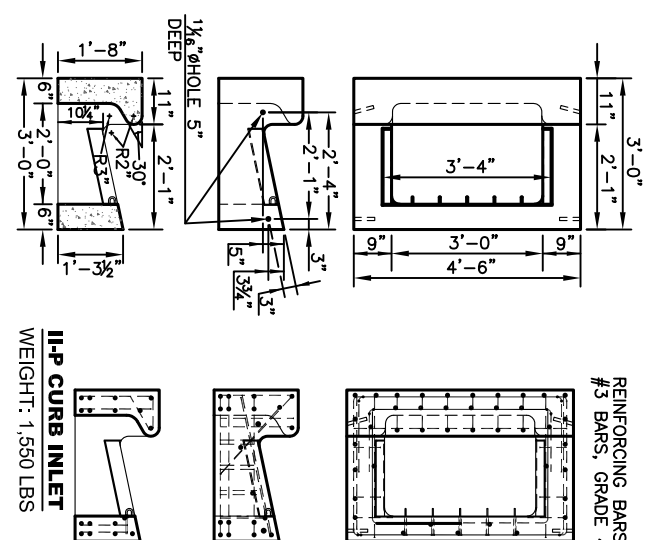
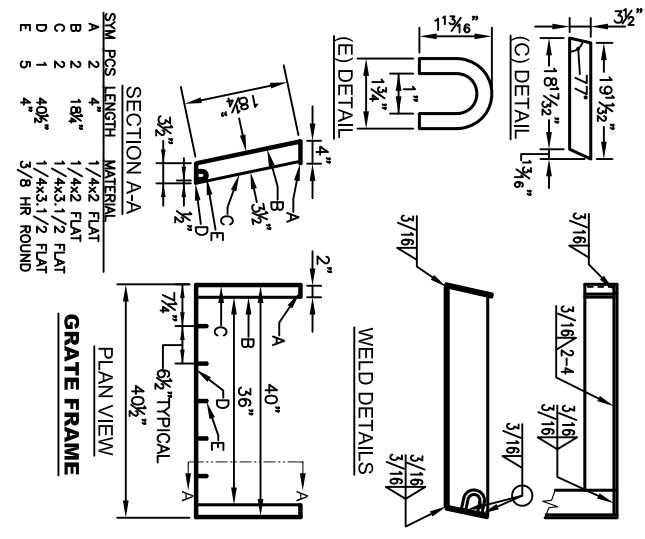


AREA INLET GRATE

SECTION

INLET GRATE

WEIGHT: 140 LBS



TYPE IIP INLET (PRECAST)
 (DT-011)

REVISIONS

NO.	DATE	REVISION	BY	APP'D.
1	Feb. 2008	Update	DHS	SB
2	Dec. 2009	Mod. dim at Int. Pos. & added 7.10 NOTES	DHS	SB
3	June 2018	Added maximum pipe intrusion note	DHS	JMH

DRAWN BY: *lm/enc*
 APP'D BY: *Chris M. Adams*



SHAWNEE COUNTY, KANSAS
 PUBLIC WORKS DEPARTMENT
 1515 NW 94th AVE
 TOPEKA, KS 66618
 (785) 233-7702



620 SE MADISON ST., 2nd Floor • TOPEKA, KS 66607
 Phone: (785) 383-3822 • Fax: (785) 383-3881

STANDARD DETAILS

DATE: _____
 SHEET: _____
 PROJ.: _____