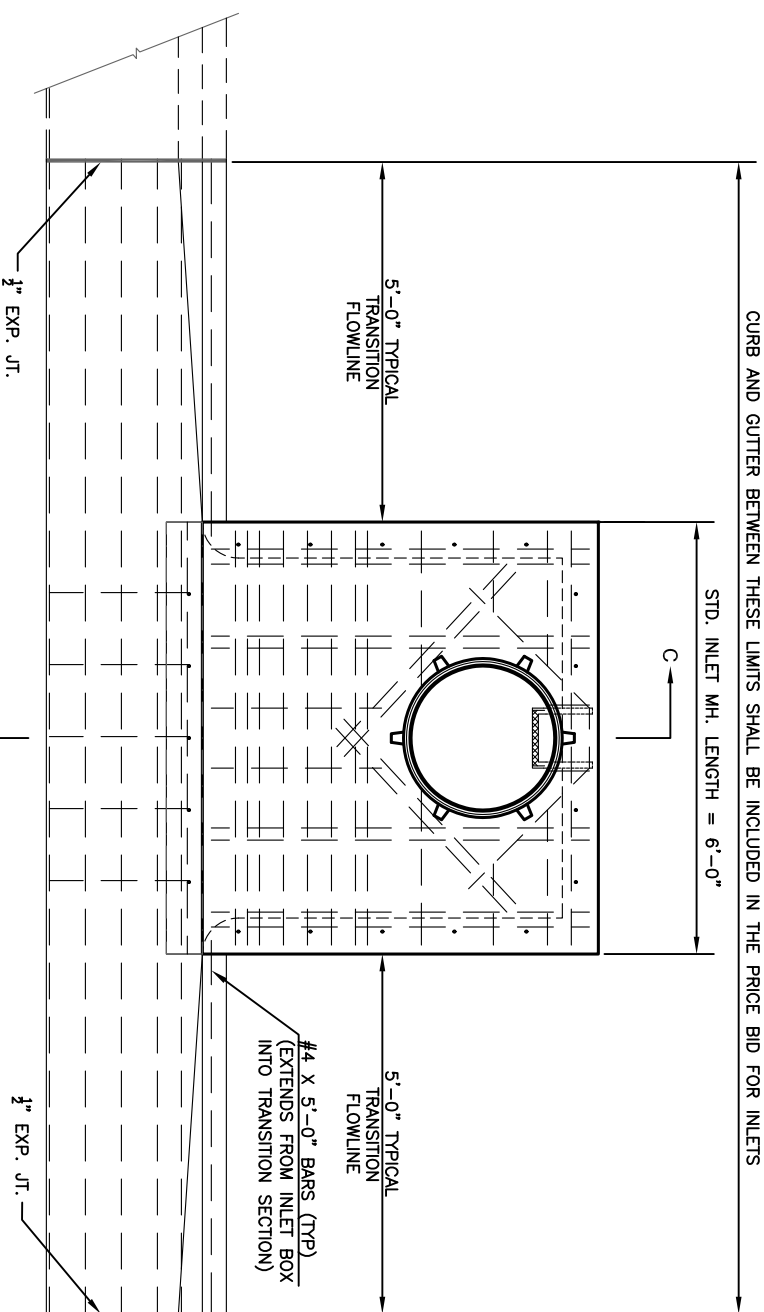
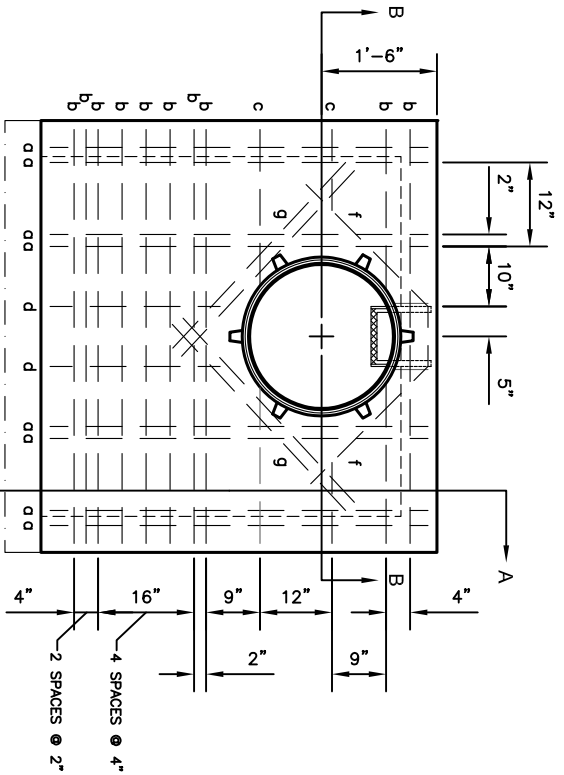


CURB AND GUTTER BETWEEN THESE LIMITS SHALL BE INCLUDED IN THE PRICE BID FOR INLETS



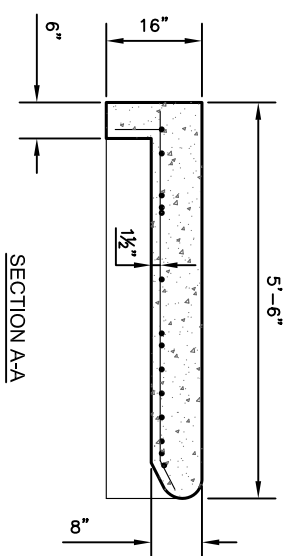
PLAN



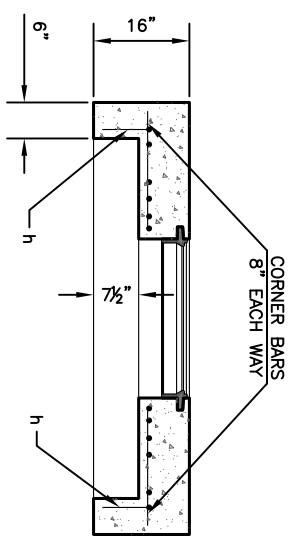
LONGITUDINAL BAR SIZE

- L = 4' - 5' #4 BAR
 - L = 6' - 7' #5 BAR
 - L = 8' - 10' #6 BAR
- ALL TRANSVERSE BARS ARE #4'S

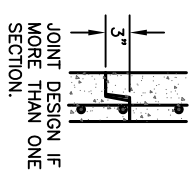
#4, #5, #6 BARS, ASTM A-615, GRADE 60
CONCRETE: 4000 PSI, AIR ENTRAINED



SECTION A-A

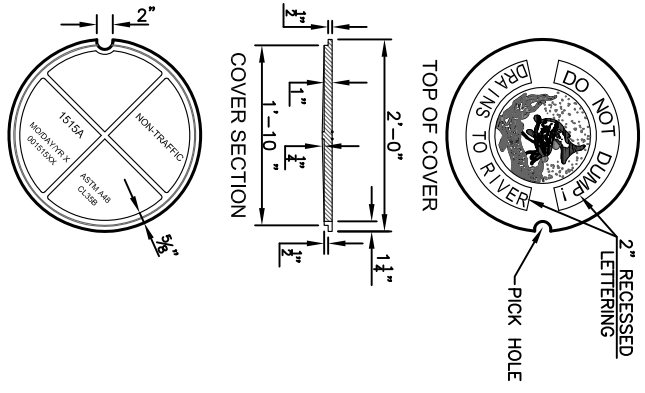


SECTION B-B

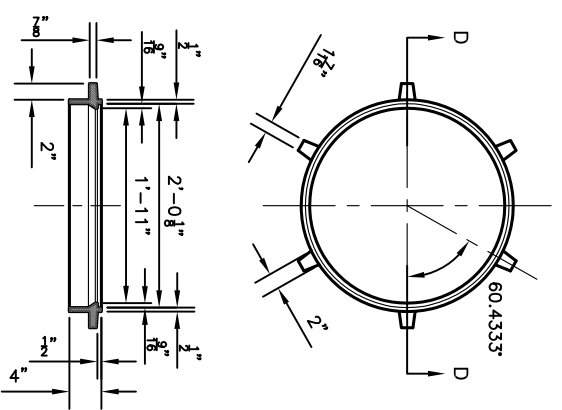


JOINT DESIGN IF MORE THAN ONE SECTION.

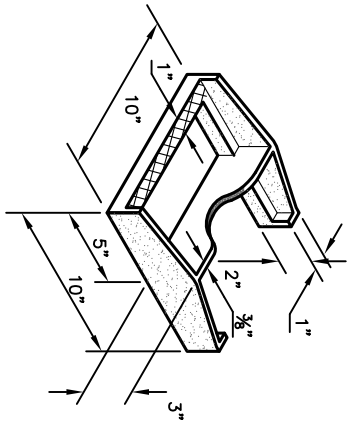
REINFORCEMENT:
#4, #5, #6 BARS
ASTM A-615
GRADE 60
CONCRETE: 4000 PSI,
AIR ENTRAINED



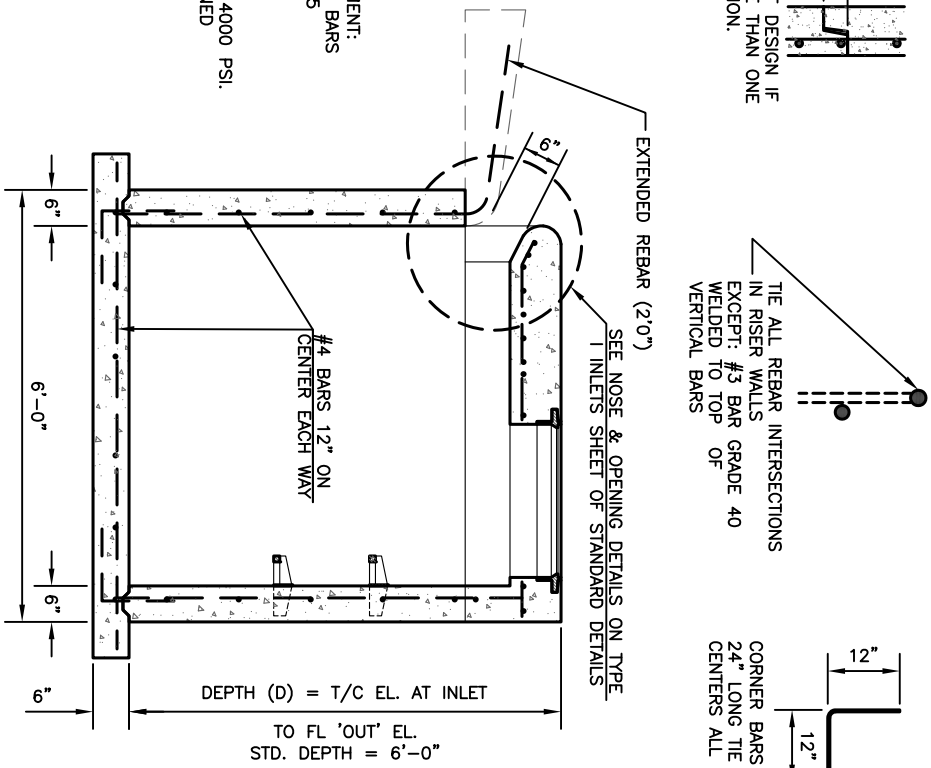
MANHOLE COVER
WT. 69 lbs.



SECTION D-D
FRAME CASTING
WT. 64 lbs.
CLAY AND BAILEY NO. 3215 OR APPROVED EQUAL.

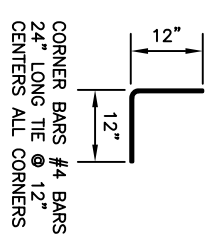


MH STEP CASTING
WT. 11 lbs.



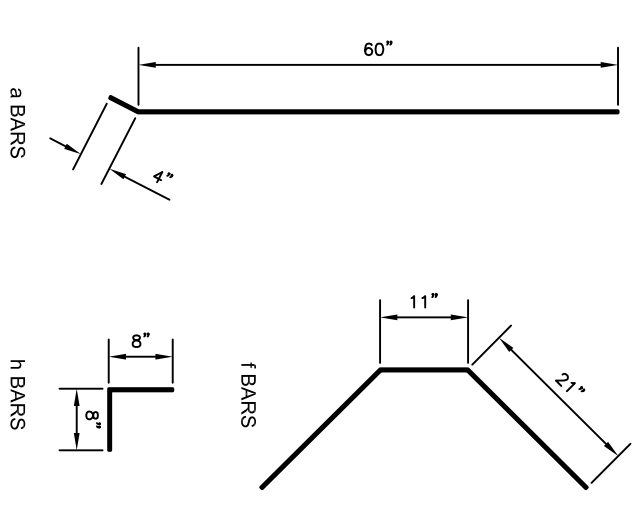
SECTION C-C

TIE ALL REBAR INTERSECTIONS IN RISER WALLS EXCEPT: #3 BAR GRADE 40 WELDED TO TOP OF VERTICAL BARS



CORNER BARS #4 BARS 24" LONG TIE @ 12" CENTERS ALL CORNERS

DEPTH (D) = T/C EL. AT INLET TO FL 'OUT' EL.
STD. DEPTH = 6'-0"



- NOTES:
1. STEPS SHALL BE INSTALLED IN ALL INLETS OVER 4' DEEP AND LOCATED UNDER MANHOLE RING AND COVER.
 2. SUPPLIERS SHALL GRIND ALL BURRS SMOOTH ON CASTINGS.
 3. THE INLET TOP SHALL SIT SQUARELY ON TOP OF THE INLET BOTTOM SECTION. THE INLET WALLS SHALL NOT BE OFFSET MORE THAN ONE INCH BETWEEN TOP AND BOTTOM SECTIONS.
 4. MAXIMUM PIPE INTRUSION INTO STRUCTURE IS 6". UNIQUE STRUCTURES MIGHT REQUIRE ADDITIONAL ANALYSIS. ENGINEER APPROVAL REQUIRED.

NO.	DATE:	REVISION	BY:	APP'D.
4	June 2018	Added maximum pipe intrusion note	DHS	JMH
3	March 2013	Changed inlet top thickness to 8"	DHS	SB
2	Dec. 2009	Added #4 bar to PLAN & 3. to NOTES	DHS	SB
1	Feb. 2008	Mod. MH Cover	DHS	SB

DRAWN BY: *lm/enc*
APPROVED BY: *R. Chandy*



SHAWNEE COUNTY, KANSAS
PUBLIC WORKS DEPARTMENT
1515 NW SAUNE
TOPEKA, KS 66618
(785) 233-7702



TOPEKA Public Works
ENGINEERING
620 SE MADISON St., 2nd Floor • TOPEKA, KS 66607
Phone: (785) 386-3842 • Fax: (785) 386-3881

STANDARD DETAILS

TYPE I-P INLETS
(PRECAST)
(DT-010)

DATE: _____
SHEET: _____
PROJ.: _____