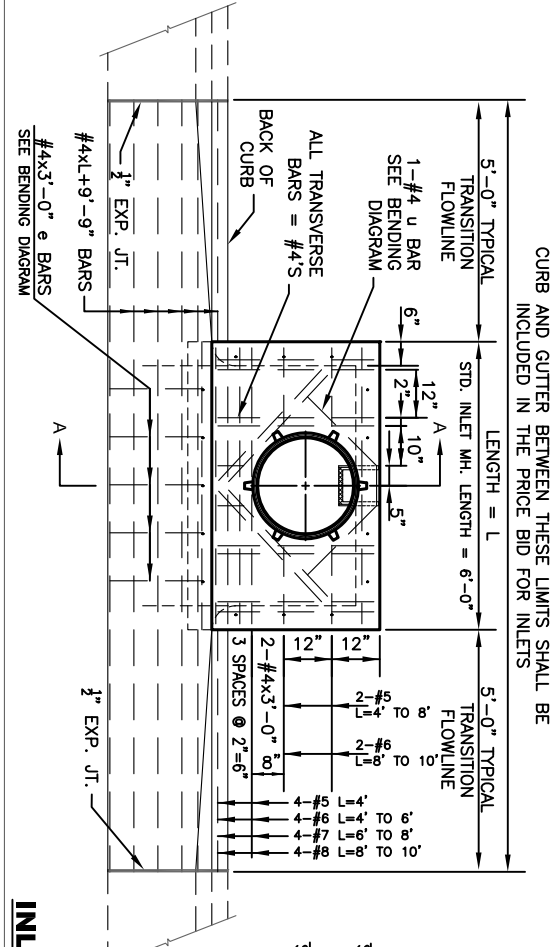


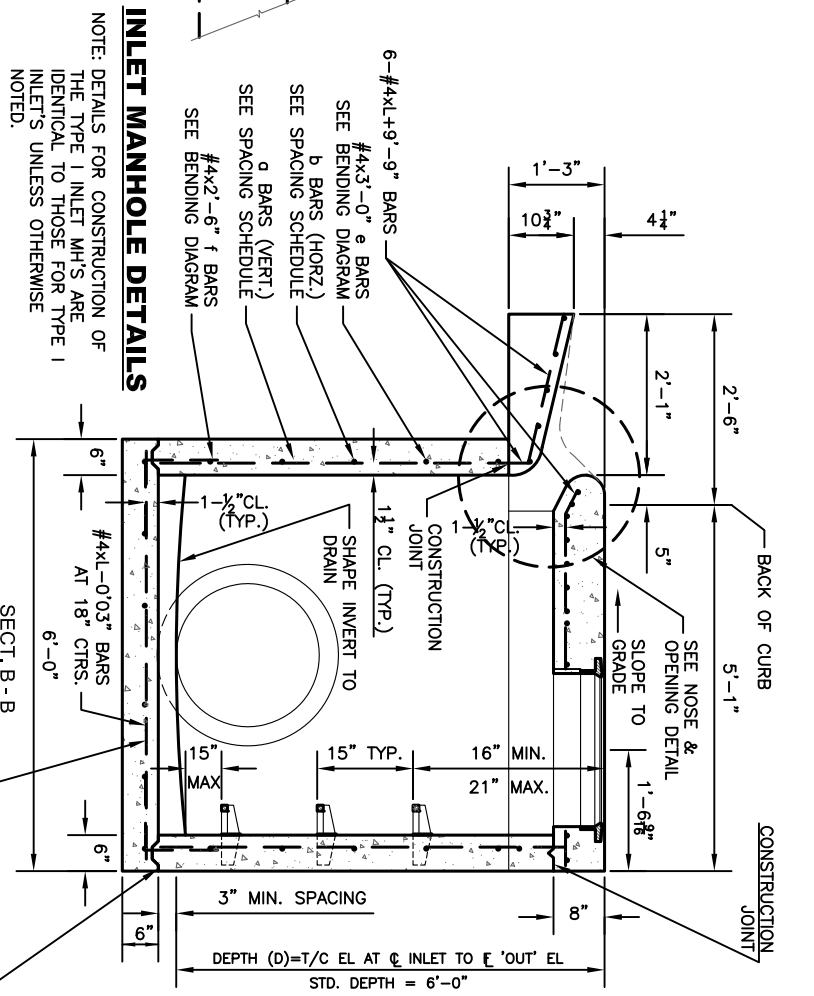
REINFORCING BAR SPACING SCHEDULE

D	L = 4'	L = 5'	L = 6'	L = 7'	L = 8'	L = 9'
3"	12"	12"	12"	12"	12"	12"
4"	18"	12"	18"	18"	18"	18"
5"	18"	12"	18"	12"	18"	18"
6"	18"	12"	18"	12"	18"	18"
7"	18"	12"	18"	12"	18"	18"
8"	18"	12"	18"	12"	18"	18"
9"	18"	12"	18"	12"	18"	18"
10"	18"	12"	18"	12"	18"	18"



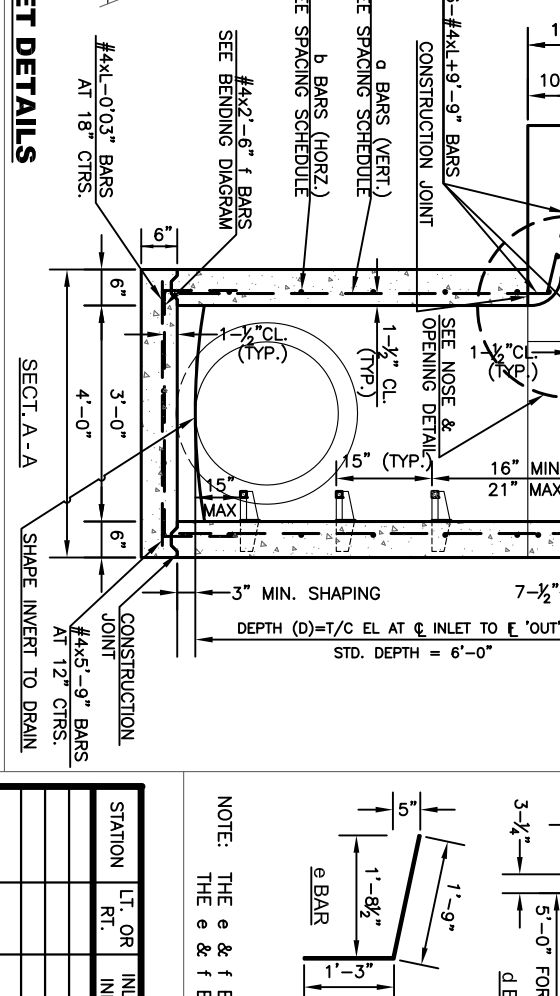
**NOTES:**

1. ALL TOP SLAB REINFORCING SHALL BE GRADE 60 REBAR.
2. USE CLASS 'A' CONCRETE THROUGHOUT. BEVEL ALL EXPOSED EDGES WITH A 3/4" TRIANGULAR MOLDING.
3. REINFORCING STEEL BARS IN INLETS OR INLET MANHOLES SHALL BE INCLUDED IN THE PRICE BID FOR EACH STRUCTURE. BARS TO BE BENT AROUND PIPE.
4. STEPS SHALL BE INSTALLED IN ALL INLETS OVER 4' DEEP AND LOCATED UNDER MANHOLE RING AND COVER.
5. SUPPLIERS SHALL GRIND ALL BURRS SMOOTH ON CASTINGS.
6. STANDARD INLETS AND INLET MANHOLES SHALL BE 6'-0" IN LENGTH UNLESS OTHERWISE SHOWN ON THE PLANS. LONGER OR SHORTER INLETS MAY BE SPECIFIED IN ONE FOOT INCREMENTS, AND ARE TO BE BID PER EACH FOOT LENGTH OF STRUCTURE AS SHOWN ON THE PLANS. INLETS OR INLET MANHOLES SHORTER THAN 6'-0" ARE TO BE BID AT THE SAME UNIT PRICE AS THE STANDARD STRUCTURES. UNIT BID PRICES ARE FOR STRUCTURES NOT EXCEEDING A DEPTH (D) OF 6'-0". EXTRA DEPTH SHALL BE PAID FOR AT THE UNIT PRICE BID FOR EXTRA DEPTH FOR EACH LENGTH OF INLET.
7. SEE SHEET ENTITLED "REINFORCING STEEL FOR INLETS AND MANHOLES" FOR DETAILS AND QUANTITIES.
8. ALL REINFORCING STEEL SHALL BE #4 @ 6" CENTERS EXCEPT WHERE NOTED OR DESIGNED BY ENGINEER. MINIMUM CLEAR DISTANCE FOR REINFORCEMENT SHALL BE 1-1/2".
9. MAXIMUM PIPE INTRUSION INTO STRUCTURE IS 6".
- UNIQUE STRUCTURES MIGHT REQUIRE ADDITIONAL ANALYSIS. ENGINEER APPROVAL REQUIRED.



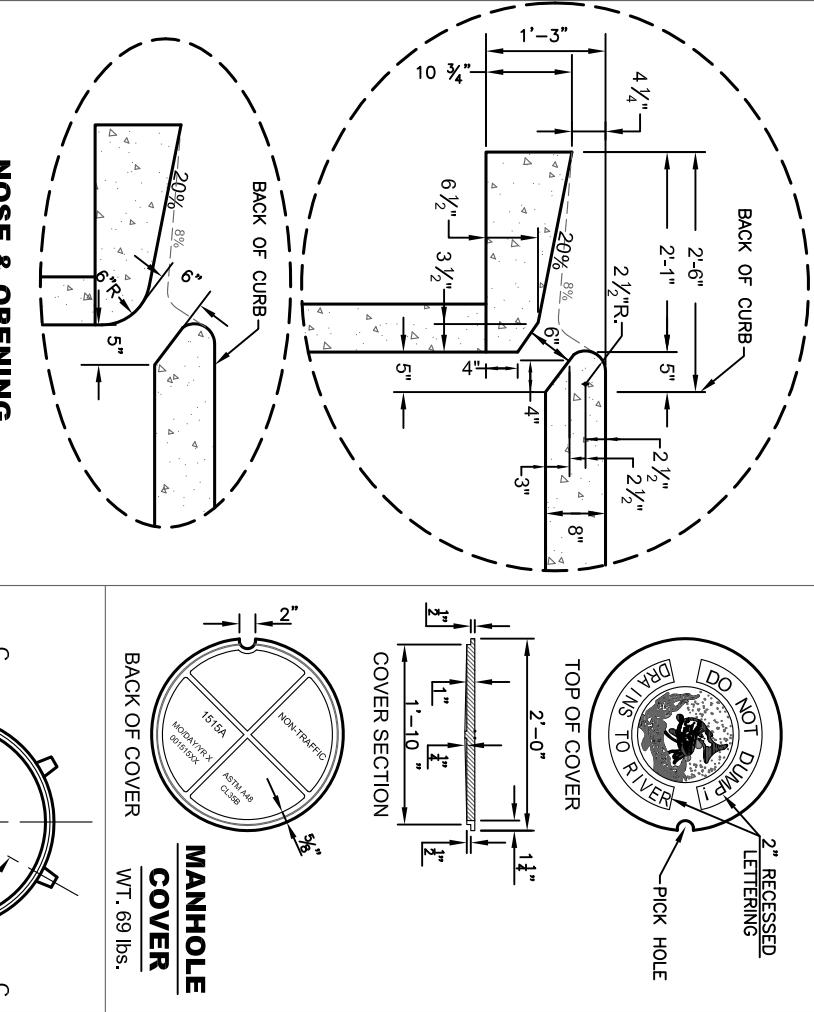
REINFORCING BAR SPACING SCHEDULE

D	L = 4'	L = 5'	L = 6'	L = 7'	L = 8'	L = 9'
3"	12"	12"	12"	12"	12"	12"
4"	18"	12"	18"	18"	18"	18"
5"	18"	12"	18"	12"	18"	18"
6"	18"	12"	18"	12"	18"	18"
7"	18"	12"	18"	12"	18"	18"
8"	18"	12"	18"	12"	18"	18"
9"	18"	12"	18"	12"	18"	18"
10"	18"	12"	18"	12"	18"	18"



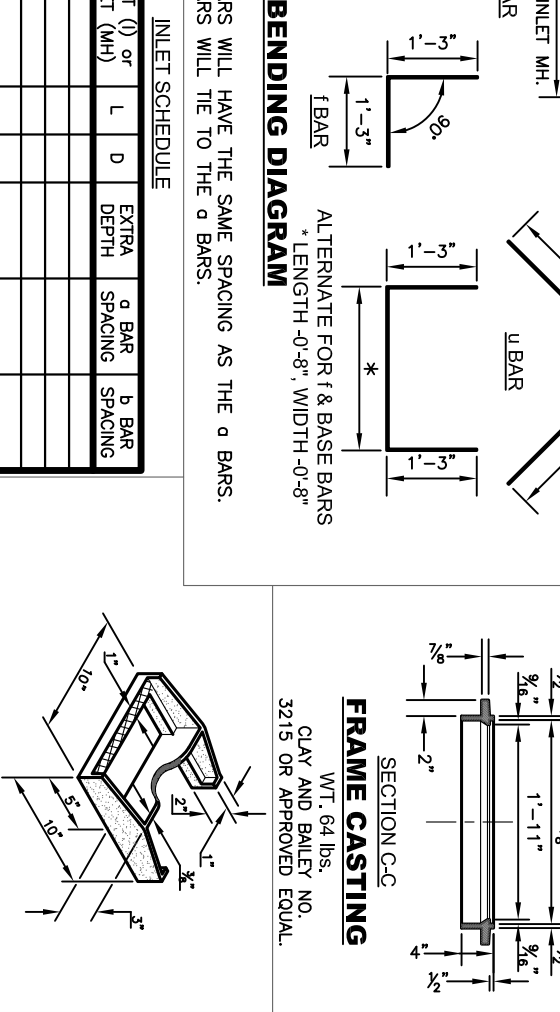
**NOTES:**

1. ALL TOP SLAB REINFORCING SHALL BE GRADE 60 REBAR.
2. USE CLASS 'A' CONCRETE THROUGHOUT. BEVEL ALL EXPOSED EDGES WITH A 3/4" TRIANGULAR MOLDING.
3. REINFORCING STEEL BARS IN INLETS OR INLET MANHOLES SHALL BE INCLUDED IN THE PRICE BID FOR EACH STRUCTURE. BARS TO BE BENT AROUND PIPE.
4. STEPS SHALL BE INSTALLED IN ALL INLETS OVER 4' DEEP AND LOCATED UNDER MANHOLE RING AND COVER.
5. SUPPLIERS SHALL GRIND ALL BURRS SMOOTH ON CASTINGS.
6. STANDARD INLETS AND INLET MANHOLES SHALL BE 6'-0" IN LENGTH UNLESS OTHERWISE SHOWN ON THE PLANS. LONGER OR SHORTER INLETS MAY BE SPECIFIED IN ONE FOOT INCREMENTS, AND ARE TO BE BID PER EACH FOOT LENGTH OF STRUCTURE AS SHOWN ON THE PLANS. INLETS OR INLET MANHOLES SHORTER THAN 6'-0" ARE TO BE BID AT THE SAME UNIT PRICE AS THE STANDARD STRUCTURES. UNIT BID PRICES ARE FOR STRUCTURES NOT EXCEEDING A DEPTH (D) OF 6'-0". EXTRA DEPTH SHALL BE PAID FOR AT THE UNIT PRICE BID FOR EXTRA DEPTH FOR EACH LENGTH OF INLET.
7. SEE SHEET ENTITLED "REINFORCING STEEL FOR INLETS AND MANHOLES" FOR DETAILS AND QUANTITIES.
8. ALL REINFORCING STEEL SHALL BE #4 @ 6" CENTERS EXCEPT WHERE NOTED OR DESIGNED BY ENGINEER. MINIMUM CLEAR DISTANCE FOR REINFORCEMENT SHALL BE 1-1/2".
9. MAXIMUM PIPE INTRUSION INTO STRUCTURE IS 6".
- UNIQUE STRUCTURES MIGHT REQUIRE ADDITIONAL ANALYSIS. ENGINEER APPROVAL REQUIRED.



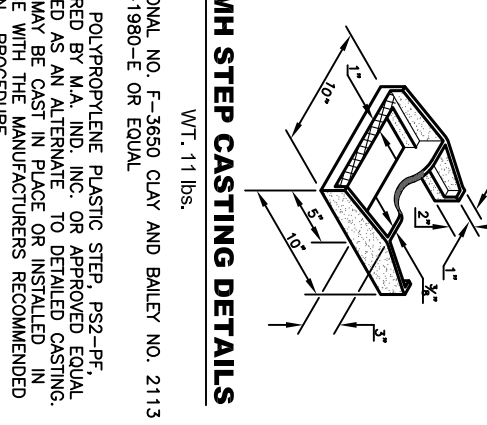
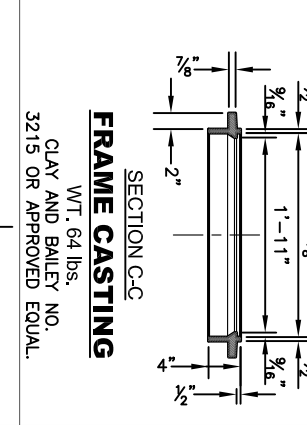
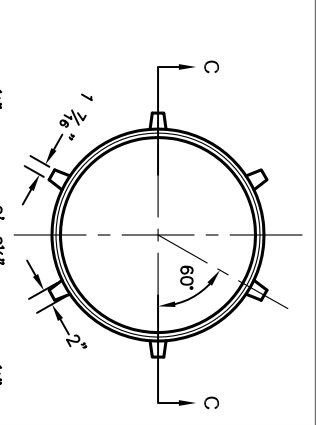
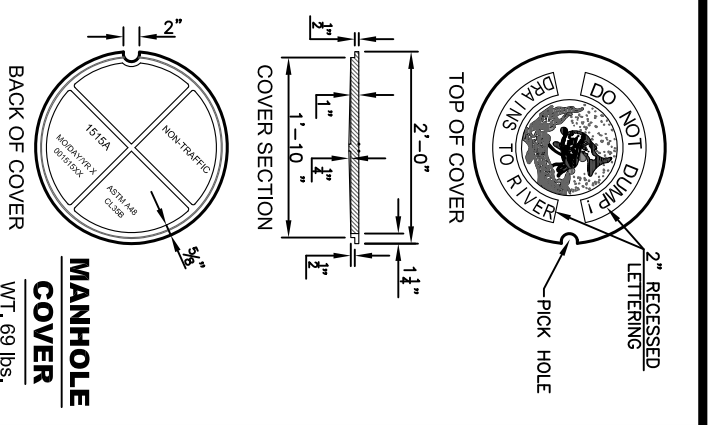
REINFORCING BAR SPACING SCHEDULE

D	L = 4'	L = 5'	L = 6'	L = 7'	L = 8'	L = 9'
3"	12"	12"	12"	12"	12"	12"
4"	18"	12"	18"	18"	18"	18"
5"	18"	12"	18"	12"	18"	18"
6"	18"	12"	18"	12"	18"	18"
7"	18"	12"	18"	12"	18"	18"
8"	18"	12"	18"	12"	18"	18"
9"	18"	12"	18"	12"	18"	18"
10"	18"	12"	18"	12"	18"	18"



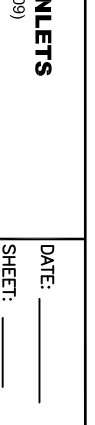
**NOTES:**

1. ALL TOP SLAB REINFORCING SHALL BE GRADE 60 REBAR.
2. USE CLASS 'A' CONCRETE THROUGHOUT. BEVEL ALL EXPOSED EDGES WITH A 3/4" TRIANGULAR MOLDING.
3. REINFORCING STEEL BARS IN INLETS OR INLET MANHOLES SHALL BE INCLUDED IN THE PRICE BID FOR EACH STRUCTURE. BARS TO BE BENT AROUND PIPE.
4. STEPS SHALL BE INSTALLED IN ALL INLETS OVER 4' DEEP AND LOCATED UNDER MANHOLE RING AND COVER.
5. SUPPLIERS SHALL GRIND ALL BURRS SMOOTH ON CASTINGS.
6. STANDARD INLETS AND INLET MANHOLES SHALL BE 6'-0" IN LENGTH UNLESS OTHERWISE SHOWN ON THE PLANS. LONGER OR SHORTER INLETS MAY BE SPECIFIED IN ONE FOOT INCREMENTS, AND ARE TO BE BID PER EACH FOOT LENGTH OF STRUCTURE AS SHOWN ON THE PLANS. INLETS OR INLET MANHOLES SHORTER THAN 6'-0" ARE TO BE BID AT THE SAME UNIT PRICE AS THE STANDARD STRUCTURES. UNIT BID PRICES ARE FOR STRUCTURES NOT EXCEEDING A DEPTH (D) OF 6'-0". EXTRA DEPTH SHALL BE PAID FOR AT THE UNIT PRICE BID FOR EXTRA DEPTH FOR EACH LENGTH OF INLET.
7. SEE SHEET ENTITLED "REINFORCING STEEL FOR INLETS AND MANHOLES" FOR DETAILS AND QUANTITIES.
8. ALL REINFORCING STEEL SHALL BE #4 @ 6" CENTERS EXCEPT WHERE NOTED OR DESIGNED BY ENGINEER. MINIMUM CLEAR DISTANCE FOR REINFORCEMENT SHALL BE 1-1/2".
9. MAXIMUM PIPE INTRUSION INTO STRUCTURE IS 6".
- UNIQUE STRUCTURES MIGHT REQUIRE ADDITIONAL ANALYSIS. ENGINEER APPROVAL REQUIRED.



**INLET SCHEDULE**

STATION	L.T. OR RT.	INLET (I) OR INLET (MH)	L	D	EXTRA DEPTH	a BAR SPACING	b BAR SPACING



**STANDARD DETAILS**

**TYPE I INLETS**

(D1-009)