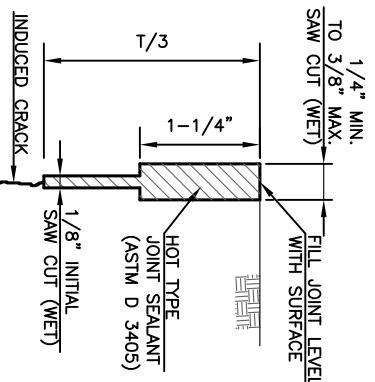
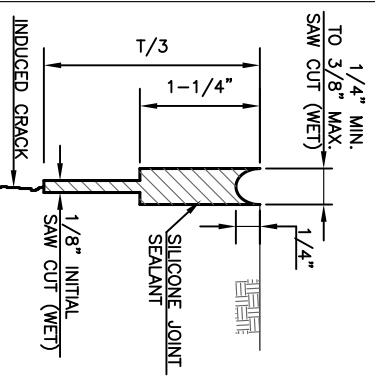
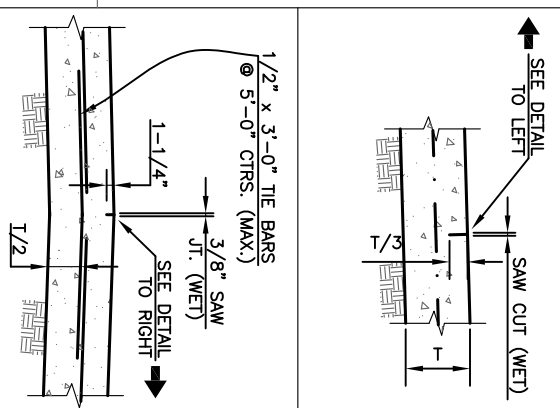


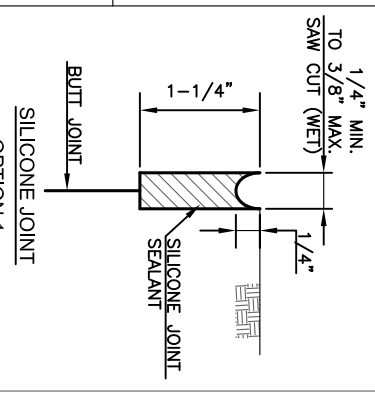
6" INTEGRAL CURB
 Ø 1-1/2" FOR DRIVE ENTRANCES
 AND 3/4" FOR SIDEWALK RAMPS.



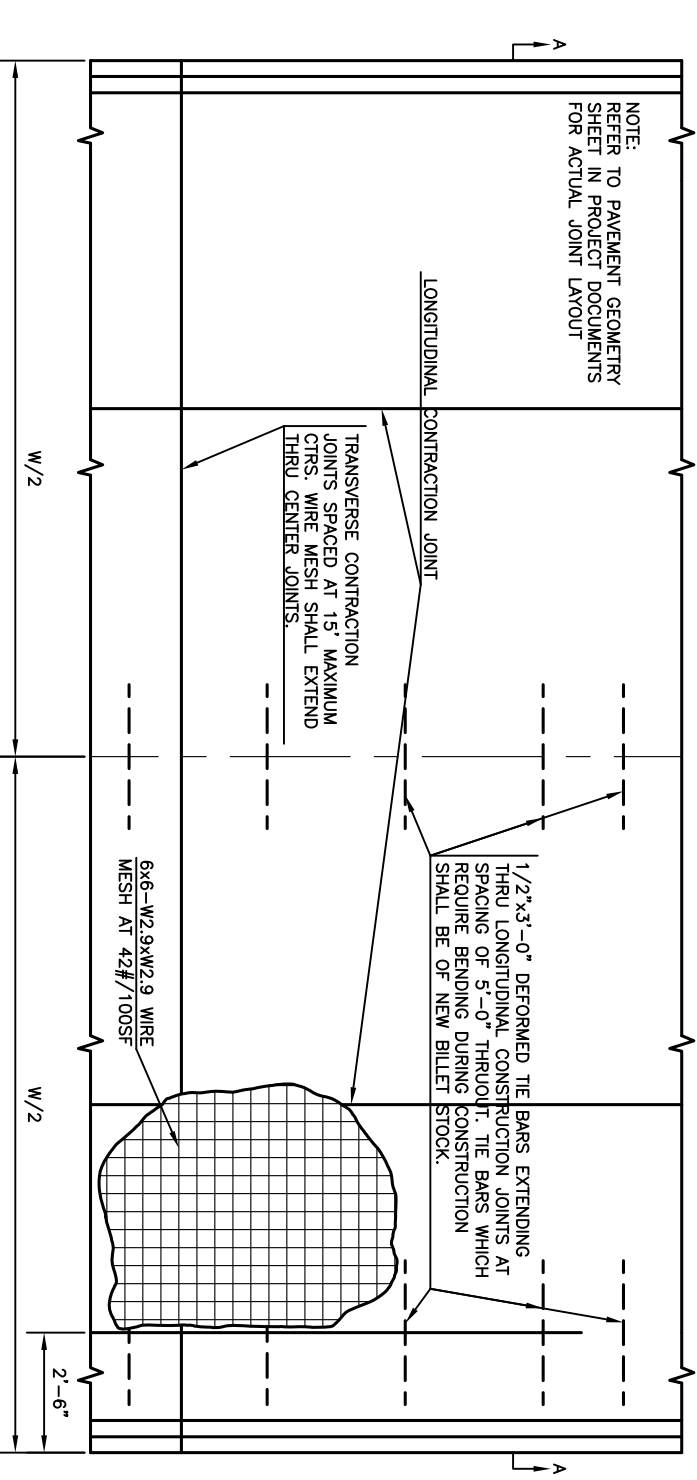
TRANSVERSE AND LONGITUDINAL CONTRACTION JOINTS



TRANSVERSE AND LONGITUDINAL BUTT JOINTS

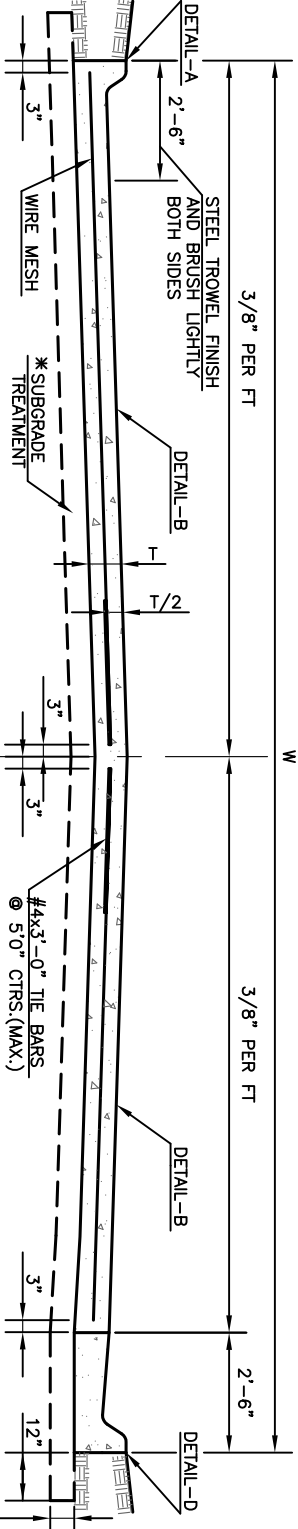


THE CONTRACTOR HAS THE OPTION OF MAINTAINING T OR
 TRANSITIONING AS SHOWN AT NO ADDITIONAL COST TO OWNER.
 Ø 1-1/2" FOR DRIVE ENTRANCES AND 3/4" FOR SIDEWALK RAMPS.



NOTE: STANDARD LANE WIDTH = 11'-0"

PLAN VIEW



TYPICAL PAVEMENT
 SECTION A-A

*SUBGRADE TREATMENT PER
 GEOTECHNICAL REPORT.
 NOTE:
 COMBINED CURB AND GUTTER OR INTEGRAL CURB MAY BE USED WITH CONCRETE PAVEMENT CONSTRUCTION
 AS DETERMINED BY THE CITY/COUNTY ENGINEER. SEE TYPICAL PAVEMENT SECTION ABOVE.

NO.	DATE:	REVISION	BY:	APP'D.
6	June 2018	Eliminated sealing butt joint at curb toe	DHS	JMH
5	March 2013	Made bar size " & added ref. to DT-017	DHS	SB
4	Dec. 2012	Changed to the bars at Detail D	DHS	SB
3	March 2010	Eliminated keyed joint of Typical Section	DHS	SB
2	Dec. 2009	Eliminated keyed joints	DHS	SB
1	Feb. 2008	Mod. Det. 5 B,C&D and Sect. 9 A-A&D-D	DHS	SB

DRAWN BY: *lm/enc*
 APP'D BY: *Shawnee County*



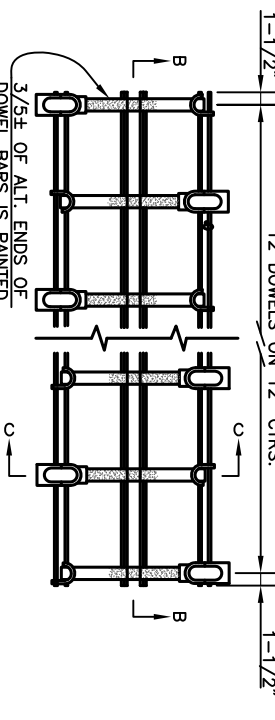
SHAWNEE COUNTY, KANSAS
 PUBLIC WORKS DEPARTMENT
 1515 NW SALINE
 TOPEKA, KS 66618
 (785) 233-7702



620 SE MADISON St., 2nd Floor • TOPEKA, KS 66607
 Phone: (785) 238-3822 • Fax: (785) 238-3881

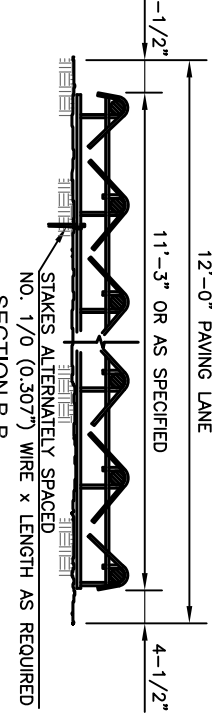
CONCRETE PAVEMENT
 DETAILS
 (DT-002)

DATE: _____
 SHEET: _____
 PROJ.: _____

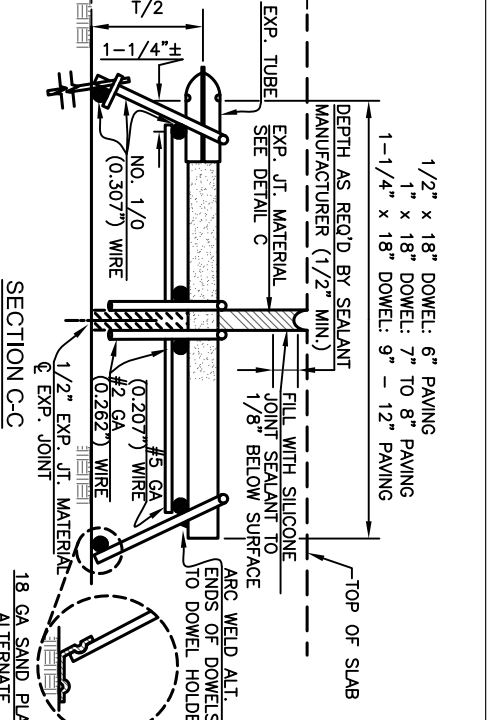


EXPANSION JOINT ASSEMBLY

NOTES:
 1. DOWELS, PLAIN ROUND PER A.S.T.M. A-615, GRADE 40 OR AS SPECIFIED.
 2. UNIT-WIRED TOGETHER FOR QUICK DISASSEMBLY AND PLACEMENT OF
 EXPANSION AND FILLER IN FIELD.
 3. ALL WIRE SIZES SHOWN ARE MINIMUM. DOWELS, PLAIN ROUND PER A.S.T.M.
 A-615, GRADE



SECTION B-B

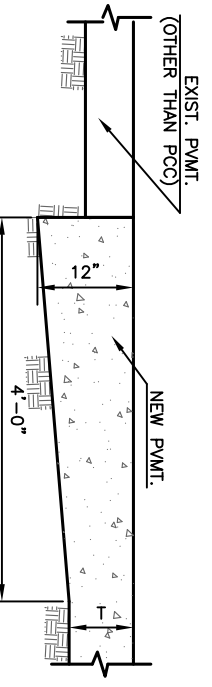


SECTION C-C



DETAIL OF LAP

NOTE:
 THE LAP WIRE SHALL EXTEND BEYOND THE FIRST TRANSVERSE WIRE OF EACH
 SHEET. THE SHEET SHALL BE WIRED SECURELY AT THE EDGES AND AT
 INTERVALS NOT TO EXCEED 2-6" FOR THE FULL WIDTH OF THE SHEET.
 APPROXIMATE WEIGHT OF WIRE MESH = 42 LBS./100 SQ. FT. OTHER
 METHODS FOR FASTENING THE SHEETS OF WIRE MESH AT THE LAPS MAY BE
 USED WITH THE APPROVAL OF THE ENGINEER.



DETAIL OF JOINT AT
 EXISTING PAVEMENT

NOTES:
 1. SAND IS NOT AN APPROVED FILL OR SUBGRADE MATERIAL.
 2. WHERE NEW PAVEMENT ABUTS EXISTING PCC PAVEMENT, THICKENED SECTION
 SHALL BE ELIMINATED AND 1" DIA. SMOOTH DOWELS SHALL BE PLACED @
 12" CENTERS. THE DOWELS SHALL BE ARRANGED SIMILAR TO THE DETAIL
 FOR FULL PANEL REPAIR & UTILITY CUTS SHOWN ON MISCELLANEOUS
 DETAILS I (DT-017).