

---

# Department of Financial Services

## City of Topeka, Kansas Interim Financial Report

For the Period Ended

October 31, 2011



**Prepared by the Financial Services Division**

Pam Simecka, Acting Director of Budget & Financial Services,  
Asst. Finance Director/City Controller

Tina M. Loyd, Accounting Manager

Amy Vail, Accountant II

Kristin Ready, Accountant II

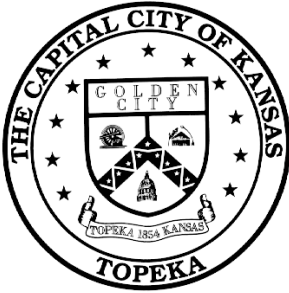
Dee Chinn, AR and Utility Billing Specialist

Curtis R. Cox, City Treasurer

---

**Interim  
Financial Statement Index  
October 31, 2011**

	Page
Executive Summary	1
General Fund	2-3
Monthly Sales Tax Revenues from 2007-2011	4
Special Street Repair	5
Street Repair ½% Sales Tax	6
Combined Water, Water Pollution Control and Stormwater	7
Internal Service Funds – Income Statements	8
Statement of Indebtedness	9



# CITY OF TOPEKA

---

FINANCIAL SERVICES, City Controller Division  
City Hall, 215 SE 7<sup>th</sup> Street, Suite 358  
Topeka, KS 66603-3914  
Telephone: (785) 368-3970

Tina M. Loyd, Accounting Mgr.  
Email: [tloyd@topeka.org](mailto:tloyd@topeka.org)  
Fax: (785) 368-3975  
Website: [www.topeka.org](http://www.topeka.org)

October 14, 2011

Interim City Manager, Daniel R. Stanley  
215 SE 7th, Room 352  
Topeka, Kansas 66603

Dear Mr. Stanley:

I am pleased to transmit to you the City of Topeka's *Interim, Unaudited Financial and Related Information Report* for the ten months ended October 31, 2011. This Report:

- Summarizes the results of operations for the current fiscal year;
- Provides information on the current fund balance and retained earnings for certain operating funds.

The dollar amounts presented in this Report reflect those financial transactions that have been processed through the City's Financial Services Department year-to-date. Certain graphs and charts, as well as budget comparisons, have been included as supplementary statistical information. If you have any questions or concerns about this report, please do not hesitate to contact Pam Simecka, Acting Director of Budget & Finance/City Controller, or myself.

Sincerely,

*Tina M. Loyd*

Tina M. Loyd  
Accounting Manager

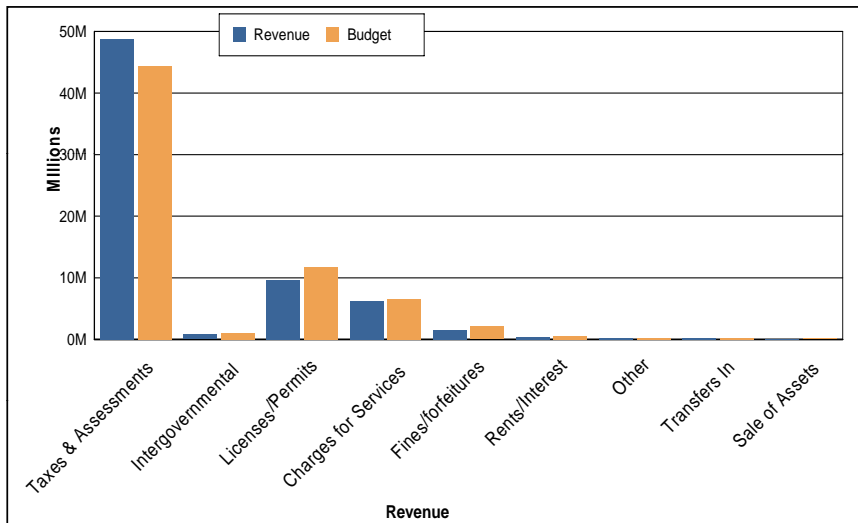
C: Topeka City Council Members  
City of Topeka Department Heads



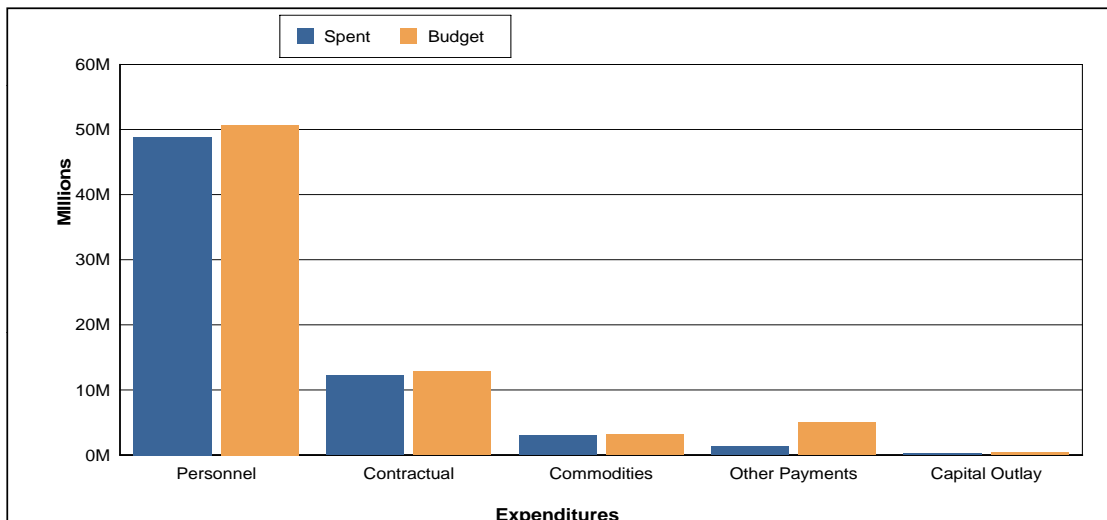
**GENERAL FUND**  
**City of Topeka, Kansas**  
**Annual Budget (#10) to Year-to-Date Actuals with Encumbrances**  
**at October 31, 2011**  
**"Unaudited"**



	2011 Adjusted Budget	% of Budget Spent	2011 Year to Date Adj. Budget	2011 YTD Actuals w/Encumb	Year-to-Date Adj. Budget Variance	% YTD Actual to Adj Budget
<b>Revenue</b>						
Taxes & Assessments	\$ 53,179,394	91.5%	\$ 44,316,140	\$ 48,637,365	\$ 4,321,225	109.8%
Intergovernmental	1,186,272	68.9%	988,570	817,227	(171,343)	82.7%
Licenses/Permits & Franchise Fees	14,076,625	68.4%	11,713,840	9,628,675	(2,085,165)	82.2%
Charges for Services	7,888,335	78.6%	6,570,090	6,196,672	(373,418)	94.3%
Fines/forfeitures	2,515,300	59.2%	2,096,090	1,488,725	(607,365)	71.0%
Rents/Interest	704,299	56.7%	586,910	399,601	(187,309)	68.1%
Other	329,500	65.7%	274,590	216,377	(58,213)	78.8%
Transfers In	300,000	66.7%	250,000	200,000	(50,000)	80.0%
Sale of Assets	190,000	44.2%	158,330	83,950	(74,380)	53.0%
<b>Total Revenue</b>	<b>80,369,725</b>	<b>84.2%</b>	<b>66,954,560</b>	<b>67,668,591</b>	<b>714,031</b>	<b>101.1%</b>
<b>Expenses</b>						
Personnel	60,736,962	80.2%	50,595,879	48,706,965	1,888,915	96.3%
Contractual	15,280,519	80.0%	12,852,573	12,205,250	647,322	95.0%
Commodities	3,779,616	79.8%	3,161,223	3,017,486	143,737	95.5%
Other Payments	5,943,085	20.9%	4,972,950	1,239,784	3,733,166	24.9%
Capital Outlay	443,796	45.8%	378,280	203,144	175,136	53.7%
<b>Total Expenses</b>	<b>86,183,979</b>	<b>75.9%</b>	<b>71,960,905</b>	<b>65,372,630</b>	<b>6,588,276</b>	<b>90.8%</b>
<b>Revenue over(under) expenditures</b>	<b>\$ (5,814,254)</b>		<b>\$ (5,006,345)</b>	<b>\$ 2,295,961</b>	<b>\$ 7,302,307</b>	



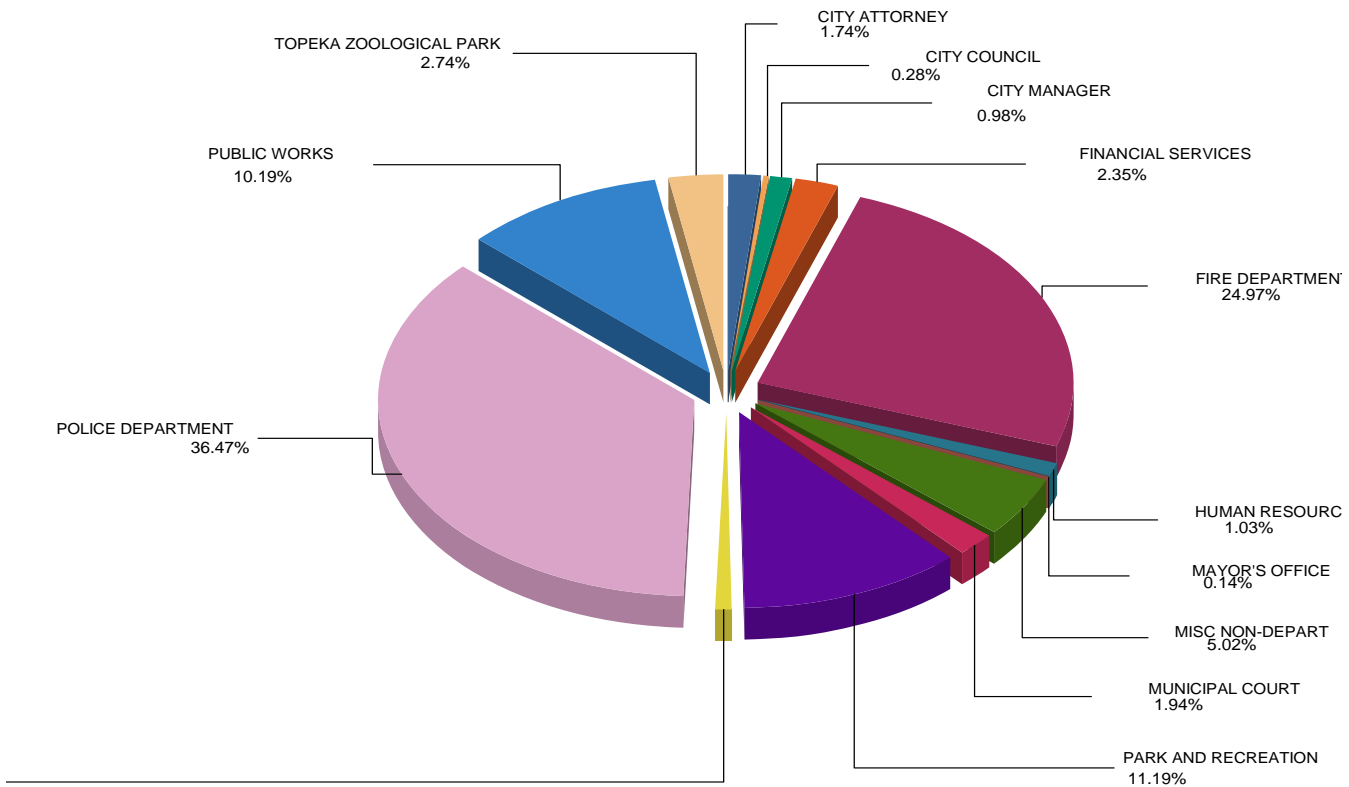
	Year to Date
Property Tax	19,830,576
Vehicle Tax	1,569,010
SalesTax	22,323,111
Assessments	104,557
PILODS	83,333
PILOTS	4,726,777
<b>Total Taxes</b>	<b>\$ 48,637,365</b>





**CITY OF TOPEKA  
GENERAL FUND DEPARTMENTS  
Actuals with Encumbrances  
as of October 31, 2011**

	Adjusted Budget #10	Year to Date Budget	Year to Date Actuals	Remaining Budget	Remaining Percentage
10101 - CITY COUNCIL	237,095	197,600	183,355	53,740	22.67%
10102 - CITY MANAGER	769,411	623,780	639,497	129,914	16.88%
10103 - CITY ATTORNEY	1,494,014	1,245,380	1,140,722	353,291	23.65%
10104 - FINANCIAL SERVICES	1,834,694	1,528,940	1,519,703	314,991	17.17%
10105 - MUNICIPAL COURT	1,735,753	1,446,652	1,272,147	463,606	26.71%
10106 - HUMAN RESOURCES	830,806	694,342	671,632	159,174	19.16%
10107 - MAYOR'S OFFICE	111,919	93,287	90,620	21,300	19.03%
1010909105 - CONTRIBUTIONS/MISC NONDEPT	7,368,456	5,981,379	2,149,896	5,218,560	70.82%
1010909106 - PRISONER CARE	901,143	901,143	735,043	166,100	18.43%
1010909110 - HOME MATCH (AFFORDABLE HOUSING)	159,121	142,441	128,460	30,661	19.27%
1010909125 - UNSAFE STRUCTURES NONDEPT	107,710	107,710	84,185	23,525	21.84%
1010909130 - INMATE CLEANUP PROGRAM	228,464	220,203	191,752	36,712	16.07%
10120 - FIRE DEPARTMENT	20,177,700	16,815,306	16,349,061	3,828,639	18.97%
10125 - POLICE DEPARTMENT	29,304,365	24,439,757	23,875,819	5,428,546	18.52%
10130 - PUBLIC WORKS	9,352,668	7,883,596	6,673,238	2,679,430	28.65%
10140 - PARK AND RECREATION	8,661,717	7,215,119	7,326,198	1,335,518	15.42%
10150 - TOPEKA ZOOLOGICAL PARK	2,170,086	1,808,521	1,796,794	373,292	17.20%
10160 - PLANNING DEPARTMENT	738,857	615,750	617,163	121,694	16.47%
	<b>86,183,979</b>	<b>71,960,905</b>	<b>65,445,286</b>	<b>20,738,693</b>	<b>24.06%</b>



**Sales Tax Revenues  
The City of Topeka  
as of October 31, 2011  
"Unaudited"**



	2007	2008	2009	2010	2011
Budget	26,970,000	27,500,000	27,500,000	27,500,000	26,600,000
Revenue Recognized by Month:					
January	2,725,674	2,649,763	2,686,405	2,259,163	2,264,502
February	1,918,436	2,375,876	2,431,539	1,822,905	1,883,119
March	2,135,506	2,048,961	1,919,260	2,310,172	2,362,609
April	2,372,332	2,398,066	2,007,516	2,296,057	2,294,228
May	2,210,789	2,584,478	2,161,504	2,113,289	2,168,983
June	2,336,735	2,302,707	2,381,268	2,334,951	2,257,207
July	2,290,031	2,485,527	2,024,195	2,158,120	2,298,896
August	2,152,904	2,310,893	2,060,764	2,218,836	2,415,208
September	2,465,636	2,316,344	2,231,968	2,077,693	2,146,620
October	2,026,567	2,160,624	2,253,707	2,133,692	2,231,740
November	2,259,755	2,311,542	2,287,456	2,192,868	-
December	2,361,035	2,047,000	2,120,684	2,690,245	-
<b>Total</b>	<b><u>27,255,400</u></b>	<b><u>27,991,781</u></b>	<b><u>26,566,266</u></b>	<b><u>26,607,991</u></b>	<b><u>22,323,111</u></b>

Accumulated Revenue Received Year-to-Date by Month:

January	2,725,674	2,649,763	2,686,405	2,259,163	2,264,502
February	4,644,110	5,025,639	5,117,944	4,082,068	4,147,621
March	6,779,616	7,074,600	7,037,204	6,392,240	6,510,230
April	9,151,948	9,472,666	9,044,720	8,688,297	8,804,458
May	11,362,737	12,057,144	11,206,224	10,801,586	10,973,441
June	13,699,472	14,359,851	13,587,492	13,136,537	13,230,647
July	15,989,503	16,845,378	15,611,687	15,294,657	15,529,543
August	18,142,407	19,156,271	17,672,451	17,513,493	17,944,751
September	20,608,043	21,472,615	19,904,419	19,591,186	20,091,371
October	22,634,610	23,633,239	22,158,126	21,724,878	22,323,111
November	24,894,365	25,944,781	24,445,582	23,917,746	-
December	27,255,400	27,991,781	26,566,266	26,607,991	-

*As of 2010, the City will be accruing for two months versus one month of revenue.*

*September and October 2011 are based on multiple year averages.*



**CITY OF TOPEKA**  
**INCOME STATEMENT FOR 291 - SPECIAL STREET REPAIR**  
**as of October 31, 2011**  
**This Year's Amount Includes Encumbrances Prior Year Does Not**



	Annual Budget #10	Monthly Amount	Yearly Amount	Remaining Budget	Prior Year Amount	Variance
<b>Revenues</b>						
Intergovernmental	5,530,231	1,436,493	4,598,612	931,619	4,787,338	(188,726)
Charges for Services	-	0	-	-	3,121	(3,121)
Other	136,356	0	48,562	87,794	68,139	(19,577)
Sale of Assets	10,000	0	-	10,000	-	-
<b>Total Revenues</b>	<b>5,676,587</b>	<b>1,436,493</b>	<b>4,647,174</b>	<b>1,029,413</b>	<b>4,858,597</b>	<b>(211,424)</b>
<b>Expenses</b>						
Personnel	2,606,833	184,720	2,081,315	525,518	2,077,841	(3,474)
Contractual	1,571,972	149,240	1,117,207	454,764	1,307,827	190,620
Other Payments	107,200	4,285	149,522	42,322	24,679	(124,843)
Commodities	1,592,022	123,333	1,331,241	260,781	873,515	(457,726)
Capital Outlay	946,202	0	486,766	459,436	303,211	(183,555)
Misc Other Expenses	-	50	50	50	-	(50)
<b>Total Operating Expenses</b>	<b>6,824,229</b>	<b>461,628</b>	<b>5,166,100</b>	<b>1,658,129</b>	<b>4,587,073</b>	<b>(579,027)</b>
<b>NET INCOME (NET LOSS)</b>	<b><u>\$(1,147,642)</u></b>	<b><u>\$ 974,865</u></b>	<b><u>\$(518,927)</u></b>	<b><u>\$(628,715)</u></b>	<b><u>\$ 271,524</u></b>	<b><u>\$(790,451)</u></b>



**CITY OF TOPEKA**  
**INCOME STATEMENT FOR 292 - SALES TAX STREET MAINT**  
**as of October 31, 2011**  
**This Year's Amount Includes Encumbrances Prior Year Does Not**



	Annual Budget #10	Monthly Amount	Yearly Amount	Remaining Budget	Prior Year Amount	Variance
<b>Revenues</b>						
Taxes & Assessments	13,300,000	1,207,604	11,190,822	2,109,178	11,005,258	185,564
Interest	-	1,356	8,041	8,041	1,230	6,811
Other	-	3,353	19,133	19,133	39,228	(20,094)
<b>Total Revenues</b>	<b>13,300,000</b>	<b>1,212,313</b>	<b>11,217,996</b>	<b>2,082,004</b>	<b>11,045,715</b>	<b>172,281</b>
<b>Expenses</b>						
Personnel	81,087	10,072	89,948	8,861	66,667	(23,281)
Contractual	13,974,616	272,573	853,022	13,121,594	577,803	(275,219)
Other Payments	5,518,639	1,701,229	10,858,595	5,339,956	2,455,579	(8,403,016)
Commodities	1,944	0	(114,059)	116,003	185,114	299,174
<b>Total Operating Expenses</b>	<b>19,576,286</b>	<b>1,983,873</b>	<b>11,687,506</b>	<b>7,888,780</b>	<b>3,285,163</b>	<b>(8,402,343)</b>
<b>NET INCOME (NET LOSS)</b>	<b><u>\$(6,276,286)</u></b>	<b><u>\$(771,560)</u></b>	<b><u>\$(469,510)</u></b>	<b><u>\$(5,806,776)</u></b>	<b><u>\$ 7,760,552</u></b>	<b><u>\$(8,230,062)</u></b>



**CITY OF TOPEKA**  
**INCOME STATEMENT FOR COMBINED UTILITIES**  
**as of October 31, 2011**  
**Excludes Encumbrances**



	Annual Budget #10	Monthly Amount	Yearly Amount	Remaining Budget	Prior Year Amount	Variance
<b>Revenues</b>						
Taxes & Assessments	-	-	17,270	17,270	15	17,254
Licenses/Permits & Franchise Fees	201,000	6,820	148,175	52,825	105,105	43,070
Charges for Services	61,882,980	5,478,463	49,514,715	12,368,265	49,223,441	291,273
Interest	970,940	83,661	1,350,020	379,080	480,655	869,365
Rents	17,000	-	600	16,400	19,187	(18,587)
Other	1,084,780	146,175	983,868	100,912	661,186	322,683
Sale of Assets	-	-	35,568	35,568	(145,798)	181,366
<b>Total Revenues</b>	<b>64,156,700</b>	<b>5,715,119</b>	<b>52,050,216</b>	<b>12,106,484</b>	<b>50,343,792</b>	<b>1,706,424</b>
<b>Expenses</b>						
Personnel	11,914,528	925,861	9,197,043	2,717,485	9,288,085	91,042
Contractual	15,230,072	981,711	10,911,419	4,318,653	10,494,111	(417,308)
Other Payments	5,860,841	433,238	3,409,821	2,451,020	5,545,699	2,135,878
Commodities	7,448,428	678,026	5,062,698	2,385,730	4,105,593	(957,105)
Capital Outlay	-	-	122,980	122,980	1,805	(121,175)
Misc Other Expenses	22,368,890	1,648,993	16,642,944	5,725,946	17,953,296	1,310,352
<b>Total Operating Expenses</b>	<b>62,822,758</b>	<b>4,667,830</b>	<b>45,346,904</b>	<b>17,475,854</b>	<b>47,388,588</b>	<b>2,041,684</b>
<b>NET INCOME (NET LOSS)</b>	<b>\$ 1,333,942</b>	<b>\$ 1,047,289</b>	<b>\$6,703,312</b>	<b>\$(5,369,370)</b>	<b>\$ 2,955,204</b>	<b>\$ 3,748,108</b>

**INTERNAL SERVICES FUNDS**  
Statement of Revenues, Expenses & Changes in Retained Earnings  
City of Topeka  
At October 31, 2011  
"Unaudited"

	Information Technology	Fleet Services	Insurance Vehicle Damage	Self Insured Workers' Comp	Group Health	Risk Mgmt Reserve	Unemployment Compensation
<b>Revenues</b>							
Charges for services	\$ 3,220,697.00	\$ 1,172,623.00	\$ 733,889.00	\$ 1,261,998.00	\$ 7,290,572.00	-	\$ 102,939.00
Other revenue	28,541.00	6,559.00	247,113.62	5,628.79	3,660.91	-	-
<b>Total Revenue</b>	<b>3,249,238.00</b>	<b>1,179,182.00</b>	<b>981,002.62</b>	<b>1,267,626.79</b>	<b>7,294,232.91</b>	<b>-</b>	<b>102,939.00</b>
<b>Expenses:</b>							
Personnel services	709,333.00	894,643.00	-	48,691.00	-	-	-
Contractual services	1,741,370.00	100,889.00	311,379.00	1,063,874.00	1,263,175.00	-	9,567.00
Commodities	40,350.00	46,330.00	-	1,362.00	-	-	-
Other payments & costs	7,769.43	(54,073.60)	46,348.00	317,629.00	7,946,275.00	-	200,401.00
<b>Total Expenses</b>	<b>2,498,822.43</b>	<b>987,788.40</b>	<b>357,727.00</b>	<b>1,431,556.00</b>	<b>9,209,450.00</b>	<b>-</b>	<b>209,968.00</b>
<b>Net income before depreciation</b>	<b>750,415.57</b>	<b>191,393.60</b>	<b>623,275.62</b>	<b>(163,929.21)</b>	<b>(1,915,217.09)</b>	<b>-</b>	<b>(107,029.00)</b>
Depreciation	502,735.87	20,772.60	-	-	-	-	-
Interest Income	-	-	-	577.00	1,007.00	826.00	-
Interest Expense	97,457.70	-	-	-	-	-	-
<b>Net Income (Loss)</b>	<b>150,222.00</b>	<b>170,621.00</b>	<b>623,275.62</b>	<b>(163,352.21)</b>	<b>(1,914,210.09)</b>	<b>826.00</b>	<b>(107,029.00)</b>
<b>Retained Earnings beginning of year</b>	<b>165,891.04</b>	<b>825,588.66</b>	<b>1,138,324.39</b>	<b>754,732.21</b>	<b>2,861,851.09</b>	<b>1,677,180.28</b>	<b>207,292.04</b>
<b>Retained Earnings end of year</b>	<b>\$ 316,113.04</b>	<b>\$ 996,209.66</b>	<b>\$ 1,761,600.01</b>	<b>\$ 591,380.00</b>	<b>\$ 947,641.00</b>	<b>\$ 1,678,006.28</b>	<b>\$ 100,263.04</b>

**CITY OF TOPEKA, KANSAS**

**Schedule of Bonded Indebtedness by Issue Type**

October 31, 2011

Name & purpose of debt	Series	Date of issue	Interest rate %	Amount of debt issued	Amount Outstanding 01-Jan-11	Date due		Transactions Year-to-Date		Amount Outstanding 31-Oct-11
						Interest	Principal	Retired	Refunded	
Taxable General Obligation Bonds	2004A	08/12/04	4.00 - 5.00	\$ 13,385,000	\$ 6,925,000	2/15 & 8/15	8/15	\$ 1,245,000	\$ -	\$ 5,680,000
General Obligation Taxable	2005C	11/29/05	4.875 - 5.25	5,070,000	2,705,000	2/15 & 8/15	8/15	525,000	-	2,180,000
General Obligation Bonds	2006A	11/28/06	4.00 - 4.25	13,670,000	10,470,000	2/15 & 8/15	8/15	530,000	9,940,000	-
General Obligation Bonds Rfdg	2007A	02/28/07	3.50 - 4.25	14,135,000	12,845,000	2/15 & 8/15	8/15	1,850,000	2,080,000	-
General Obligation Bonds	2007D	11/28/07	4.00 - 4.50	15,085,000	13,655,000	2/15 & 8/15	8/15	575,000	-	8,915,000
General Obligation & Refunding Bonds	2008A	10/29/08	3.50 - 5.60	24,570,000	7,530,000	2/15 & 8/15	8/15	220,000	-	13,080,000
General Obligation Bonds	2009A	10/28/09	2.50 - 4.00	3,345,000	3,205,000	2/15 & 8/15	8/15	120,000	-	7,310,000
General Obligation & Refunding Bonds	2009B	10/28/09	2.50 - 4.00	50,940,686	43,889,897	2/15 & 8/15	8/15	5,545,814	-	3,085,000
General Obligation Bonds	2010A	09/29/10	1.625 - 4.00	1,650,000	1,650,000	2/15 & 8/15	8/15	70,000	-	38,344,083
General Obligation Bonds Rfdg	2010B	09/29/10	1.625 - 4.375	34,830,000	34,830,000	2/15 & 8/15	8/15	592,364	-	1,580,000
General Obligation Taxable - Build America	2010C	09/29/10	2.05 - 4.85	4,570,000	4,570,000	2/15 & 8/15	8/15	-	-	34,237,636
General Obligation & Refunding Bonds	2011A	09/20/11	2.00 - 4.25	25,765,000	-	2/15 & 8/15	8/15	-	-	4,570,000
General Obligation Bonds	2011B	09/29/11	2.00 - 4.00	3,430,000	-	2/15 & 8/15	8/15	-	-	25,765,000
<b>Subtotal Governmental G. O. Bonds</b>				<b>210,445,686</b>	<b>142,274,897</b>			<b>11,273,178</b>	<b>12,020,000</b>	<b>29,195,000</b>
General Obligation Bonds (Pkg. Gar.)	2006B	11/28/06	4.00 - 4.375	7,570,000	6,985,000	2/15 & 8/15	8/15	160,000	-	6,825,000
General Obligation & Refunding Bonds	2009B	10/28/09	2.50 - 4.00	5,804,314	5,655,103	2/15 & 8/15	8/15	154,186	-	5,500,917
General Obligation Bonds Rfdg Garage portic	2010B	09/29/10	1.625 - 4.375	155,000	155,000.00	2/15 & 8/15	8/15	2,636	-	152,364
<b>Subtotal Business-type G. O. Bonds</b>				<b>13,529,314</b>	<b>12,795,103</b>			<b>316,822</b>	<b>-</b>	<b>12,478,281</b>
Heartland Park STAR bonds <sup>1</sup>	2006A	03/30/06	4.00 - 5.50	10,405,000	9,890,000	2/15 & 8/15	8/15	280,000	9,610,000	-
College Hill TIF Refunding Bonds <sup>2</sup>	2010	12/14/10	2.00 - 3.60	5,805,000	5,805,000	2/15 & 8/15	8/15	200,000	-	5,605,000
Heartland Park STAR bonds <sup>1</sup>	2011A	09/20/11	2.00 - 3.25	9,855,000	-	2/15 & 8/15	8/15	-	-	9,855,000
<b>Subtotal Other General Obligation Bonds</b>				<b>26,065,000</b>	<b>15,695,000</b>			<b>480,000</b>	<b>9,610,000</b>	<b>9,855,000</b>
<b>Total General Obligation Bonds</b>				<b>\$250,040,000</b>	<b>\$170,765,000</b>			<b>\$12,070,000</b>	<b>\$21,630,000</b>	<b>\$39,050,000</b>
W&WPC Util. Rfdg. Rev.	2004A	02/19/04	2.00 - 6.00	\$ 46,180,000	\$ 39,430,000	2/1 & 8/1	8/1	\$ 1,065,000	\$15,900,000	\$ -
W&WPC Util. Rev.	2005A	12/08/05	4.00 - 7.50	14,875,000	13,515,000	2/1 & 8/1	8/1	240,000	-	22,465,000
Combined Utility Refunding.	2006A	10/18/06	4.25 - 4.375	32,375,000	32,375,000	2/1 & 8/1	8/1	-	-	13,275,000
Combined Utility Refunding.	2006B	10/18/06	4.00 - 5.00	22,600,000	20,655,000	2/1 & 8/1	8/1	750,000	-	32,375,000
Combined Utility Refunding.	2007B	07/17/07	4.625 - 4.75	5,210,000	5,210,000	2/1 & 8/1	8/1	-	-	19,905,000
Combined Utility Taxable	2007C	07/17/07	6.00	2,140,000	2,040,000	2/1 & 8/1	8/1	50,000	-	5,210,000
Combined Utility Taxable - Build America	2010A	09/22/10	4.55 - 4.90	985,000	985,000	2/1 & 8/1	8/1	-	-	1,990,000
Combined Utility Taxable - Recovery Zone	2010B	09/22/10	5.10 - 5.25	9,155,000	9,155,000	2/1 & 8/1	8/1	-	-	985,000
Combined Utility Taxable	2010C	09/22/10	3.75	85,000	85,000	2/1 & 8/1	8/1	-	-	85,000
Combined Utility and Refunding.	2011A	09/29/11	2.00 - 4.50	18,900,000	-	2/1 & 8/1	8/1	-	-	18,900,000
<b>Subtotal Utility Revenue Bonds</b>				<b>152,505,000</b>	<b>123,450,000</b>			<b>2,105,000</b>	<b>15,900,000</b>	<b>18,900,000</b>
Topeka Boulevard Bridge <sup>3</sup>	2006	06/15/06	4.00 - 5.00	30,625,000	21,125,000	6/15 & 12/15	12/15	-	18,445,000	-
Topeka Boulevard Bridge <sup>3</sup>	2011	10/28/11	2.00 - 4.00	14,610,000	-	6/15 & 12/15	12/15	-	-	2,680,000
<b>Subtotal Other Revenue Bonds</b>				<b>45,235,000</b>	<b>21,125,000</b>			<b>-</b>	<b>18,445,000</b>	<b>14,610,000</b>
<b>Total Revenue Bonds</b>				<b>\$197,740,000</b>	<b>\$144,575,000</b>			<b>\$ 2,105,000</b>	<b>\$34,345,000</b>	<b>\$33,510,000</b>
KDHE Revolving Loan (WPC)	01/27/93	3.11 - 3.66		\$110,215,967	\$ 65,570,618	12/1 & 6/1	12/1 & 6/1	\$ 2,829,203	\$ -	\$ 62,741,415
KDHE Revolving Loan (Water)	04/06/98	2.50 - 3.75		33,182,304	19,376,278	12/1 & 6/1	12/1 & 6/1	893,430	-	18,482,848
<b>Total Kansas DHE Revolving Loan</b>				<b>\$143,398,271</b>	<b>\$ 84,946,896</b>			<b>\$ 3,722,633</b>	<b>\$ -</b>	<b>\$ 81,224,264</b>
Temporary Notes Series	2010A	09/29/10	1.25	\$ 2,950,000	\$ 2,950,000	10/01/11	10/01/11	\$ 2,950,000	\$ -	\$ -
Temporary Notes Series	2010B	09/29/10	2.00	24,615,000	24,615,000	10/01/11	10/01/11	24,615,000	-	-
Temporary Notes Series	2011A	09/20/11	1.250	15,230,000	-	10/01/12	10/01/12	-	-	15,230,000
<b>Total Temporary Notes</b>				<b>\$ 42,795,000</b>	<b>\$ 27,565,000</b>			<b>\$27,565,000</b>	<b>\$ -</b>	<b>\$ 15,230,000</b>
<b>Total Debt</b>				<b>\$633,973,271</b>	<b>\$427,851,896</b>			<b>\$45,462,633</b>	<b>\$55,975,000</b>	<b>\$ 87,790,000</b>

1 - Become general obligation bonds if STAR revenues become inadequate.  
2 - Property and sales tax increment.  
3 - Funding comes from the .5% (1/2 percent) sales tax revenue.