

---

# Department of Financial Services

## City of Topeka, Kansas Interim Financial Report

For the Period Ended

May 31, 2011



### Prepared by the Financial Services Division

Jim Langford, Director of Budget & Financial Services

Pam Simecka, Asst. Finance Director/City Controller

Tina M. Loyd, Accounting Manager

Amy Vail, Accountant II

Kristin Ready, Accountant II

Dee Chinn, AR and Utility Billing Specialist

Curtis R. Cox, City Treasurer

---

**Interim  
Financial Statement Index  
May 31, 2011**

	Page
Executive Summary	1
General Fund	2-4
Monthly Sales Tax Revenues from 2007-2011	5
Special Street Repair	6
Street Repair ½% Sales Tax	7
Combined Water, Water Pollution Control and Stormwater	8
Statement of Indebtedness	9



# CITY OF TOPEKA

---

FINANCIAL SERVICES, City Controller Division  
City Hall, 215 SE 7<sup>th</sup> Street, Suite 358  
Topeka, KS 66603-3914  
Telephone: (785) 368-3970

Tina M. Loyd, Accounting Mgr.  
Email: [tloyd@topeka.org](mailto:tloyd@topeka.org)  
Fax: (785) 368-3975  
Website: [www.topeka.org](http://www.topeka.org)

May 31, 2011

City Manager Norton N. Bonaparte, Jr.  
215 SE 7th, Room 352  
Topeka, Kansas 66603

Dear Mr. Bonaparte:

I am pleased to transmit to you the City of Topeka's *Interim, Unaudited Financial and Related Information Report* for the five months ended May 31, 2011. This Report:

- Summarizes the results of operations for the current fiscal year;
- Provides information on the current fund balance and retained earnings for certain operating funds.

The dollar amounts presented in this Report reflect those financial transactions that have been processed through the City's Financial Services Department year-to-date. Certain graphs and charts, as well as budget comparisons, have been included as supplementary statistical information. If you have any questions or concerns about this Report, please do not hesitate to contact Jim Langford, Director of Budget & Finance, Pam Simecka, Asst. Finance Director/City Controller, or myself.

Sincerely,

*Tina M. Loyd*

Tina M. Loyd  
Accounting Manager

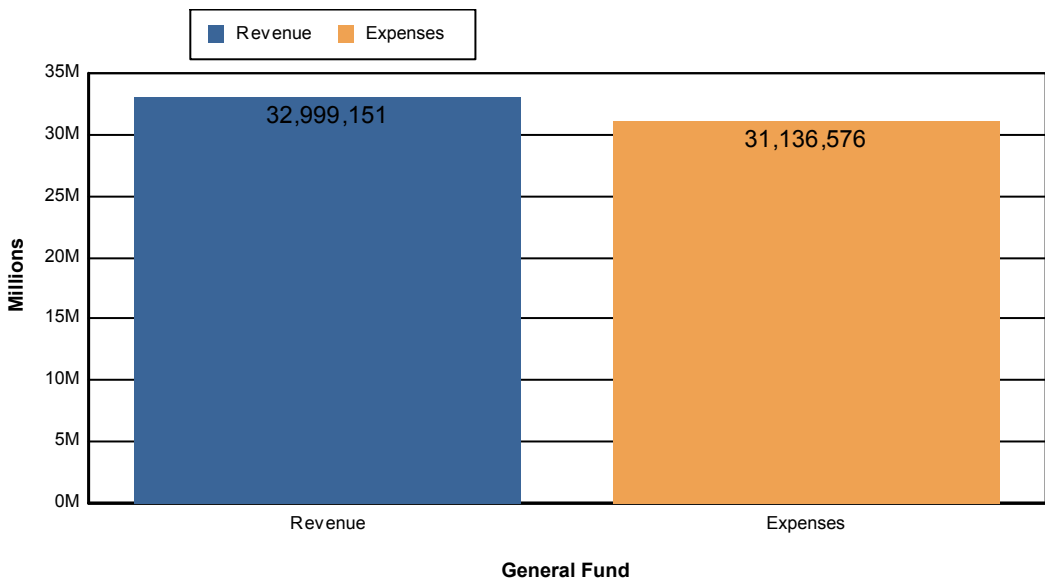
C: Topeka City Council Members  
City of Topeka Department Heads



**GENERAL FUND**  
**City of Topeka, Kansas**  
**Annual Budget (#10 ) to Year-to-Date Actuals**  
**at May 31, 2011**  
**"Unaudited"**



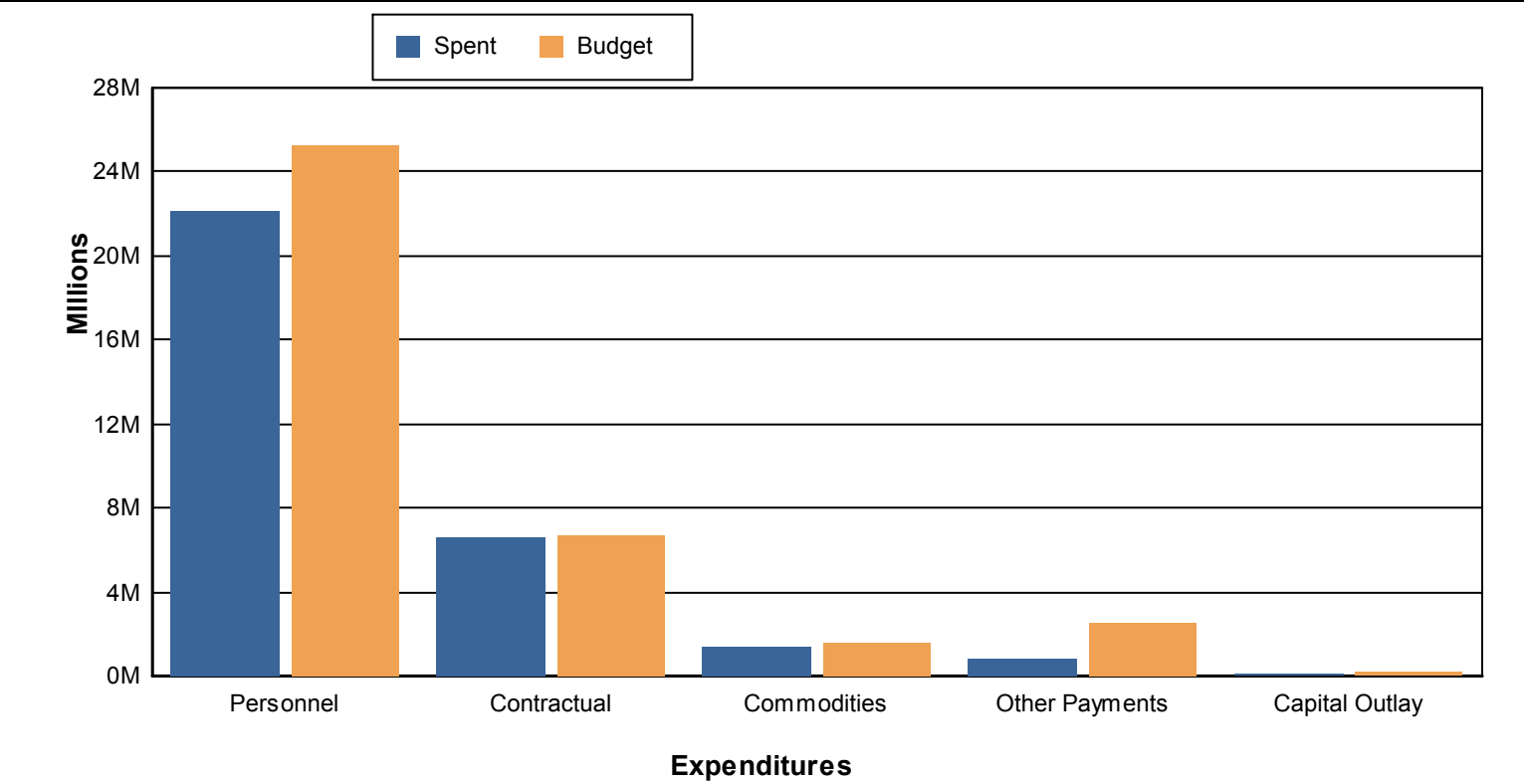
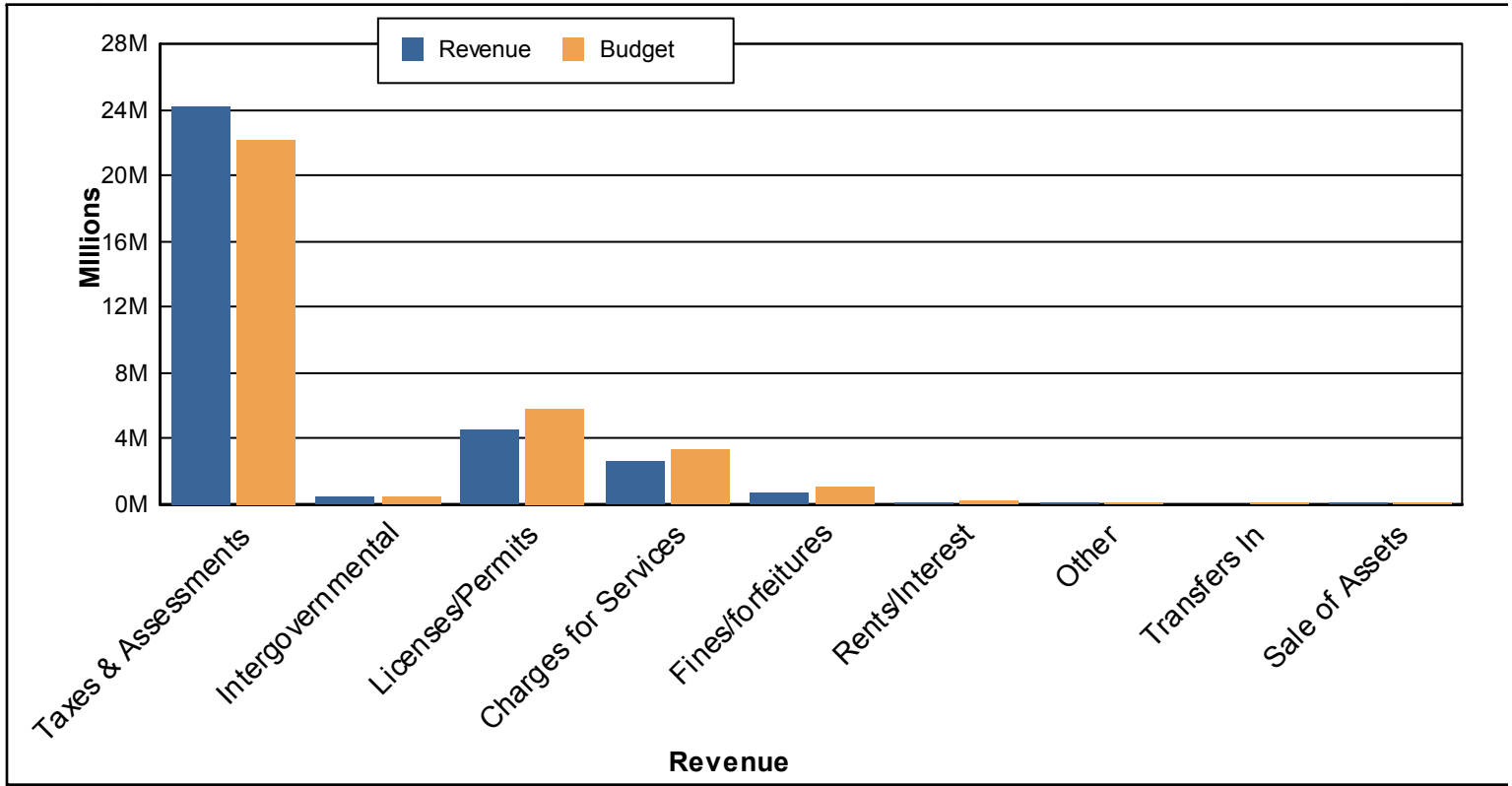
	2011 Adjusted Budget	% of Budget Spent	2011 Year to Date Adj. Budget	2011 Year to Date Actuals	Year-to-Date Adj. Budget Variance	% YTD Actual to Adj Budget
<b>Revenue</b>						
Taxes & Assessments	\$ 53,179,394	45.6%	\$ 22,158,070	\$ 24,238,906	\$ 2,080,836	109.4%
Intergovernmental	1,186,272	43.4%	494,285	514,696	20,411	104.1%
Licenses/Permits & Franchise Fees	14,056,625	32.1%	5,856,920	4,518,369	(1,338,551)	77.1%
Charges for Services	7,884,036	32.9%	3,285,045	2,596,757	(688,288)	79.0%
Fines/forfeitures	2,515,300	27.9%	1,048,045	702,226	(345,819)	67.0%
Rents/Interest	704,299	19.9%	293,455	140,095	(153,360)	47.7%
Other	329,500	41.7%	137,295	137,254	(41)	100.0%
Transfers In	300,000	- %	125,000	-	(125,000)	- %
Sale of Assets	190,000	79.4%	79,165	150,848	71,683	190.5%
<b>Total Revenue</b>	<b>80,345,426</b>	<b>41.1%</b>	<b>33,477,280</b>	<b>32,999,151</b>	<b>(478,129)</b>	<b>98.6%</b>
<b>Expenses</b>						
Personnel	60,761,712	36.5%	25,266,869	22,184,976	3,081,893	87.8%
Contractual	15,180,937	43.2%	6,701,535	6,563,696	137,838	97.9%
Commodities	3,804,366	37.6%	1,631,308	1,428,926	202,382	87.6%
Other Payments	5,989,085	14.4%	2,583,165	862,405	1,720,761	33.4%
Capital Outlay	443,796	21.8%	214,515	96,572	117,943	45.0%
<b>Total Expenses</b>	<b>86,179,897</b>	<b>36.1%</b>	<b>36,397,392</b>	<b>31,136,576</b>	<b>5,260,817</b>	<b>85.5%</b>
<b>Revenue over(under) expenditures</b>	<b>\$(5,834,471)</b>		<b>\$(2,920,112)</b>	<b>\$ 1,862,575</b>	<b>\$ 4,782,687</b>	



Year to Date	
Property Tax	10,663,730
Vehicle Tax	169,170
Sales Tax	10,949,770
Assessments	37,926
PILODS	41,667
PILOTS	2,376,643
<b>Total Taxes</b>	<b>\$ 24,238,906</b>



GENERAL FUND  
City of Topeka, Kansas  
Annual Budget (#10 ) to Year-to-Date Actuals  
at May 31, 2011  
"Unaudited"

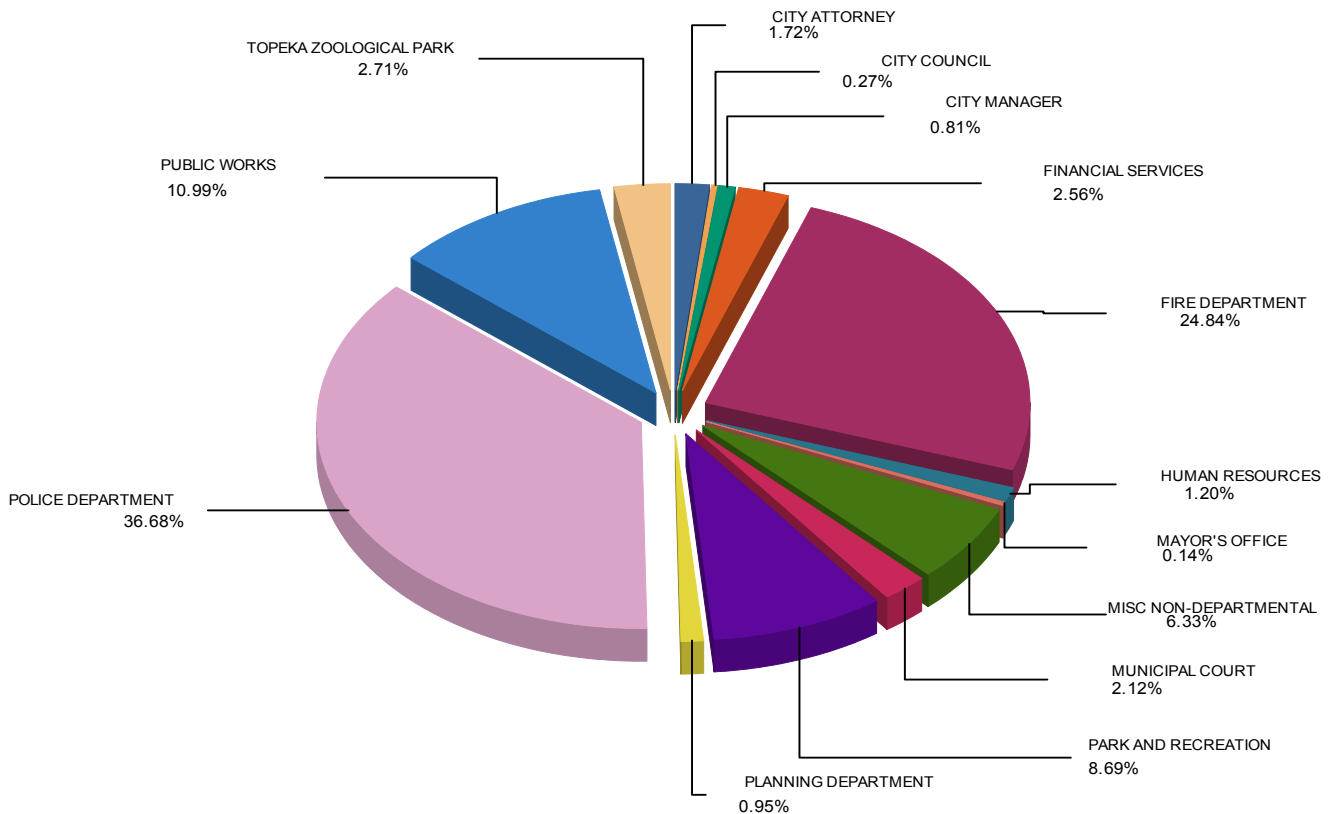




## CITY OF TOPEKA GENERAL FUND DEPARTMENTS as of May 31, 2011



	Adjusted Budget #10	Year to Date Budget	Year to Date Actuals	Remaining Budget	Remaining Percentage
10101 - CITY COUNCIL	237,095	98,800	85,208	151,887	64.06%
10102 - CITY MANAGER	739,411	229,690	251,904	487,507	65.93%
10103 - CITY ATTORNEY	1,494,014	623,765	534,835	959,179	64.20%
10104 - FINANCIAL SERVICES	1,834,694	764,470	795,872	1,038,822	56.62%
10105 - MUNICIPAL COURT	1,735,753	723,887	660,236	1,075,518	61.96%
10106 - HUMAN RESOURCES	818,724	341,130	374,828	443,896	54.22%
10107 - MAYOR'S OFFICE	111,919	46,657	43,503	68,416	61.13%
1010909105 - CONTRIBUTIONS/MISC NONDEPT	7,406,456	2,551,664	1,397,402	6,009,054	81.13%
1010909106 - PRISONER CARE	901,143	901,143	330,328	570,815	63.34%
1010909110 - HOME MATCH (AFFORDABLE HOUSING)	159,121	100,781	86,481	72,640	45.65%
1010909125 - UNSAFE STRUCTURES NONDEPT	107,710	107,710	50,757	56,953	52.88%
1010909130 - INMATE CLEANUP PROGRAM	205,964	177,033	106,889	99,075	48.10%
10120 - FIRE DEPARTMENT	20,177,700	8,409,146	7,735,293	12,442,407	61.66%
10125 - POLICE DEPARTMENT	29,304,365	12,277,910	11,419,548	17,884,817	61.03%
10130 - PUBLIC WORKS	9,352,668	4,210,716	3,420,405	5,932,263	63.43%
10140 - PARK AND RECREATION	8,684,217	3,620,554	2,705,519	5,978,697	68.85%
10150 - TOPEKA ZOOLOGICAL PARK	2,170,086	904,361	843,301	1,326,785	61.14%
10160 - PLANNING DEPARTMENT	738,857	307,975	294,264	444,593	60.17%
	<b>86,179,897</b>	<b>36,397,392</b>	<b>31,136,576</b>	<b>55,043,321</b>	<b>63.87%</b>



**Sales Tax Revenues**  
**The City of Topeka**  
**as of May 31, 2011**  
**"Unaudited"**



	2007	2008	2009	2010	2011
Budget	26,970,000	27,500,000	27,500,000	27,500,000	26,600,000
Revenue Recognized by Month:					
January	2,725,674	2,649,763	2,686,405	2,259,163	2,264,502
February	1,918,436	2,375,876	2,431,539	1,822,905	1,883,119
March	2,135,506	2,048,961	1,919,260	2,310,172	2,362,609
April	2,372,332	2,398,066	2,007,516	2,296,057	2,261,000
May	2,210,789	2,584,478	2,161,504	2,113,289	2,178,540
June	2,336,735	2,302,707	2,381,268	2,334,951	-
July	2,290,031	2,485,527	2,024,195	2,158,120	-
August	2,152,904	2,310,893	2,060,764	2,218,836	-
September	2,465,636	2,316,344	2,231,968	2,077,693	-
October	2,026,567	2,160,624	2,253,707	2,133,692	-
November	2,259,755	2,311,542	2,287,456	2,192,868	-
December	2,361,035	2,047,000	2,120,684	2,690,245	-
<b>Total</b>	<b><u>27,255,400</u></b>	<b><u>27,991,781</u></b>	<b><u>26,566,266</u></b>	<b><u>26,607,991</u></b>	<b><u>10,949,770</u></b>

Accumulated Revenue Received Year-to-Date by Month:

January	2,725,674	2,649,763	2,686,405	2,259,163	2,264,502
February	4,644,110	5,025,639	5,117,944	4,082,068	4,147,621
March	6,779,616	7,074,600	7,037,204	6,392,240	6,510,230
April	9,151,948	9,472,666	9,044,720	8,688,297	8,771,230
May	11,362,737	12,057,144	11,206,224	10,801,586	10,949,770
June	13,699,472	14,359,851	13,587,492	13,136,537	-
July	15,989,503	16,845,378	15,611,687	15,294,657	-
August	18,142,407	19,156,271	17,672,451	17,513,493	-
September	20,608,043	21,472,615	19,904,419	19,591,186	-
October	22,634,610	23,633,239	22,158,126	21,724,878	-
November	24,894,365	25,944,781	24,445,582	23,917,746	-
December	27,255,400	27,991,781	26,566,266	26,607,991	-

*As of 2010, the City will be accruing for two months versus one month, so April and May are based on multiple year averages.*



**CITY OF TOPEKA**  
**INCOME STATEMENT FOR SPECIAL STREET REPAIR**  
**as of May 31, 2011**  
**Excludes Encumbrances**



	Annual Budget #10	Monthly Amount	Yearly Amount	Remaining Budget	Prior Year Amount	Variance
<b>Revenues</b>						
Intergovernmental	5,530,231	0	1,090,966	4,439,266	1,294,941	<b>(203,975)</b>
Charges for Services	-	0	-	-	(1,119)	<b>1,119</b>
Other	136,356	2,493	27,063	109,293	42,893	<b>(15,830)</b>
Sale of Assets	10,000	0	-	10,000	-	-
<b>Total Revenues</b>	<b>5,676,587</b>	<b>2,493</b>	<b>1,118,029</b>	<b>\$4,558,558</b>	<b>1,336,715</b>	<b>218,686</b>
<b>Expenses</b>						
Personnel	2,561,833	182,490	1,089,820	1,472,013	1,034,064	<b>(55,756)</b>
Contractual	2,137,972	89,587	559,123	1,578,849	786,235	<b>227,112</b>
Other Payments	7,200	(10)	147,294	140,094	-	<b>(147,294)</b>
Commodities	1,081,022	109,664	845,584	235,438	476,325	<b>(369,260)</b>
Capital Outlay	1,036,202	0	-	1,036,202	204,607	<b>204,607</b>
<b>Total Operating Expenses</b>	<b>6,824,229</b>	<b>381,731</b>	<b>2,641,821</b>	<b>\$4,182,408</b>	<b>2,501,230</b>	<b>140,591</b>
<b>NET INCOME (NET LOSS)</b>	<b><u>(1,147,642)</u></b>	<b><u>379,237</u></b>	<b><u>(1,523,792)</u></b>	<b><u>(376,150)</u></b>	<b><u>(1,164,515)</u></b>	<b><u>(359,277)</u></b>



**CITY OF TOPEKA**  
**INCOME STATEMENT FOR SALES TAX STREET REPAIR**  
as of May 31, 2011  
**Excludes Encumbrances**



	Annual Budget #10	Monthly Amount	Yearly Amount	Remaining Budget	Prior Year Amount	Variance
<b>Revenues</b>						
Taxes & Assessments	13,300,000	1,181,305	5,473,561	7,826,439	5,444,630	28,931
Interest	-	1,211	2,414	2,414	4,165	(1,751)
Other	-	3,898	9,087	9,087	18,363	(9,275)
<b>Total Revenues</b>	<b>13,300,000</b>	<b>1,186,413</b>	<b>5,485,062</b>	<b>\$7,814,938</b>	<b>5,467,157</b>	<b>17,905</b>
<b>Expenses</b>						
Personnel	81,087	9,992	35,022	46,065	34,212	(810)
Contractual	13,974,616	145,637	284,511	13,690,105	403,012	118,501
Other Payments	5,518,639	442,702	1,057,326	4,461,313	162,480	(894,847)
Commodities	1,944	0	-	1,944	55,455	55,455
<b>Total Operating Expenses</b>	<b>19,576,286</b>	<b>598,331</b>	<b>1,376,860</b>	<b>\$18,199,426</b>	<b>655,160</b>	<b>721,700</b>
<b>NET INCOME (NET LOSS)</b>	<b>(6,276,286)</b>	<b>(588,082)</b>	<b>4,108,202</b>	<b>10,384,489</b>	<b>4,811,998</b>	<b>(703,795)</b>



**CITY OF TOPEKA**  
**INCOME STATEMENT FOR COMBINED UTILITIES**  
as of May 31, 2011  
**Excludes Encumbrances**



	Annual Budget #10	Monthly Amount	Yearly Amount	Remaining Budget	Prior Year Amount	Variance
<b>Revenues</b>						
Taxes & Assessments	-	0	8,480	8,480	-	8,480
Licenses/Permits & Franchise Fees	201,000	31,975	58,155	142,845	58,343	(188)
Charges for Services	61,882,980	4,684,100	22,612,367	39,270,613	22,907,403	(295,036)
Interest	970,940	44,023	220,229	750,711	384,355	(164,126)
Rents	17,000	0	(750)	17,750	4,187	(4,937)
Other	1,084,780	(52,273)	363,993	720,787	341,430	22,563
Sale of Assets	-	1,292	3,126	3,126	(148,272)	151,399
<b>Total Revenues</b>	<b>64,156,700</b>	<b>4,709,118</b>	<b>23,265,601</b>	<b>\$40,891,099</b>	<b>23,547,446</b>	<b>281,845</b>
<b>Expenses</b>						
Personnel	11,483,528	841,025	4,155,283	7,328,245	4,665,596	510,313
Contractual	15,435,077	990,955	5,160,514	10,274,563	5,158,266	(2,248)
Other Payments	5,860,841	345,997	1,750,281	4,110,559	2,674,233	923,952
Commodities	7,377,423	430,870	2,026,244	5,351,179	1,644,679	(381,565)
Capital Outlay	-	30,145	102,480	102,480	25,164	(77,316)
Misc Other Expenses	22,665,890	1,669,332	8,393,372	14,272,518	13,834,459	5,441,086
<b>Total Operating Expenses</b>	<b>62,822,758</b>	<b>4,308,324</b>	<b>21,588,174</b>	<b>\$41,234,585</b>	<b>28,002,397</b>	<b>6,414,223</b>
<b>NET INCOME (NET LOSS)</b>	<b>1,333,942</b>	<b>(400,794)</b>	<b>1,677,427</b>	<b>343,485</b>	<b>(4,454,951)</b>	<b>6,132,378</b>

**CITY OF TOPEKA, KANSAS**  
**Statement of Indebtedness**

For the period ending  
May 31, 2011

Name & purpose of debt	CUSIP	Series	Date of issue	Interest rate %	Amount of debt issued	Amount Outstanding 01-Jan-11	Date due		Transactions Year-to-Date			Amount Outstanding 31-May-11
							Interest	Principal	Retired	Refunded	Issued	
Taxable General Obligation Bonds	890568	2004A	08/12/04	4.00 - 5.00	\$ 13,385,000	\$ 6,925,000	2/15 & 8/15	8/15	-	-	-	\$ 6,925,000
General Obligation Taxable	890568	2005C	11/29/05	4.875 - 5.25	5,070,000	2,705,000	2/15 & 8/15	8/15	-	-	-	2,705,000
General Obligation Bonds	890568HN1	2006A	11/28/06	4.00 - 4.25	13,670,000	10,470,000	2/15 & 8/15	8/15	-	-	-	10,470,000
General Obligation Bonds (Pkg. Gar.)	890568HN1	2006B	11/28/06	4.00 - 4.375	7,570,000	6,985,000	2/15 & 8/15	8/15	-	-	-	6,985,000
General Obligation Bonds Rfdg	890568JE9	2007A	02/28/07	3.50 - 4.25	14,135,000	12,845,000	2/15 & 8/15	8/15	-	-	-	12,845,000
General Obligation Bonds	890568KA5	2007D	11/28/07	4.00 - 4.50	15,085,000	13,655,000	2/15 & 8/15	8/15	-	-	-	13,655,000
General Obligation & Refunding Bonc	890568KZ0	2008A	10/29/08	3.50 - 5.60	24,570,000	7,530,000	2/15 & 8/15	8/15	-	-	-	7,530,000
General Obligation Bonds	890568MV7	2009A	10/28/09	2.50 - 4.00	3,345,000	3,205,000	2/15 & 8/15	8/15	-	-	-	3,205,000
General Obligation & Refunding Bonc	890568MV7	2009B	10/28/09	2.50 - 4.00	56,745,000	49,545,000	2/15 & 8/15	8/15	-	-	-	49,545,000
General Obligation Bonds	890568QL5	2010A	09/29/10	1.625 - 4.00	1,650,000	1,650,000	2/15 & 8/15	8/15	-	-	-	1,650,000
General Obligation Bonds Rfdg	890568PU6	2010B	09/29/10	1.625 - 4.375	34,985,000	34,985,000	2/15 & 8/15	8/15	-	-	-	34,985,000
General Obligation Taxable - Build America		2010C	09/29/10	2.05 - 4.85	4,570,000	4,570,000	2/15 & 8/15	8/15	-	-	-	4,570,000
<b>Subtotal General Obligation Bonds</b>					<b>194,780,000</b>	<b>155,070,000</b>			-	-	-	<b>155,070,000</b>
Heartland Park STAR bonds <sup>1</sup>	890568EU8	2006A	03/30/06	4.00 - 5.50	10,405,000	9,890,000	2/15 & 8/15	8/15	-	-	-	9,890,000
College Hill TIF Refunding Bonds <sup>3</sup>	890568UM8	2010	12/14/10	2.00 - 3.60	5,805,000	5,805,000	2/15 & 8/15	8/15	-	-	-	5,805,000
<b>Subtotal Other General Obligation Bonds</b>					<b>16,210,000</b>	<b>15,695,000</b>			-	-	-	<b>15,695,000</b>
<b>Total General Obligation Bonds</b>					<b>\$ 210,990,000</b>	<b>\$ 170,765,000</b>			<b>\$ -</b>	<b>\$ -</b>	<b>\$ -</b>	<b>\$ 170,765,000</b>
W&WPC Util. Rfdg. Rev.	890680BF7	2004A	02/19/04	2.00 - 6.00	\$ 46,180,000	\$ 39,430,000	2/1 & 8/1	8/1	\$ -	\$ -	\$ -	\$ 39,430,000
W&WPC Util. Rev.	890680DE8	2005A	12/08/05	4.00 - 7.50	14,875,000	13,515,000	2/1 & 8/1	8/1	-	-	-	13,515,000
Combined Utility Refunding.	890680DR9	2006A	10/18/06	4.25 - 4.375	32,375,000	32,375,000	2/1 & 8/1	8/1	-	-	-	32,375,000
Combined Utility Refunding.	890680DR9	2006B	10/18/06	4.00 - 5.00	22,600,000	20,655,000	2/1 & 8/1	8/1	-	-	-	20,655,000
Combined Utility Refunding.	890680EV9	2007B	07/17/07	4.625 - 4.75	5,210,000	5,210,000	2/1 & 8/1	8/1	-	-	-	5,210,000
Combined Utility Taxable	N/A	2007C	07/17/07	6.00	2,140,000	2,040,000	2/1 & 8/1	8/1	-	-	-	2,040,000
Combined Utility Taxable - Build Ame	890680FS5	2010A	09/22/10	4.55 - 4.90	985,000	985,000	2/1 & 8/1	8/1	-	-	-	985,000
Combined Utility Taxable - Recovery	890680GJ4	2010B	09/22/10	5.10 - 5.25	9,155,000	9,155,000	2/1 & 8/1	8/1	-	-	-	9,155,000
Combined Utility Taxable	890680FQ9	2010C	09/22/10	3.75	85,000	85,000	2/1 & 8/1	8/1	-	-	-	85,000
<b>Subtotal Utility Revenue Bonds</b>					<b>133,605,000</b>	<b>123,450,000</b>			-	-	-	<b>123,450,000</b>
Topeka Boulevard Bridge <sup>2</sup>	890644AK3	2006	06/15/06	4.00 - 5.00	30,625,000	21,125,000	6/15 & 12/15	12/15	-	-	-	21,125,000
<b>Subtotal Other Revenue Bonds</b>					<b>30,625,000</b>	<b>21,125,000</b>			-	-	-	<b>21,125,000</b>
<b>Total Revenue Bonds</b>					<b>\$ 164,230,000</b>	<b>\$ 144,575,000</b>			<b>\$ -</b>	<b>\$ -</b>	<b>\$ -</b>	<b>\$ 144,575,000</b>
KDHE Revolving Loan (WPC)			01/27/93	3.11 - 3.66	\$ 110,215,967	\$ 65,570,618	12/1 & 6/1	12/1 & 6/1	\$ -	\$ -	\$ -	\$ 65,570,618
KDHE Revolving Loan (Water)			04/06/98	2.50 - 3.75	33,182,304	19,376,278	12/1 & 6/1	12/1 & 6/1	310,703	-	-	19,065,575
<b>Total Kansas DHE Revolving Loan</b>					<b>\$ 143,398,271</b>	<b>\$ 84,946,896</b>			<b>\$ 310,703</b>	<b>\$ -</b>	<b>\$ -</b>	<b>\$ 84,636,193</b>
Temporary Notes Series		2010B	09/29/10	2.000	\$ 24,615,000	\$ 24,615,000		10/01/11	\$ -	\$ -	\$ -	24,615,000
<b>Total Temporary Notes</b>					<b>\$ 24,615,000</b>	<b>\$ 24,615,000</b>			<b>\$ -</b>	<b>\$ -</b>	<b>\$ -</b>	<b>\$ 24,615,000</b>
<b>Total Debt</b>					<b>\$ 543,233,271</b>	<b>\$ 424,901,896</b>			<b>\$ 310,703</b>	<b>\$ -</b>	<b>\$ -</b>	<b>\$ 424,591,193</b>

1 - Become general obligation bonds if STAR revenues become inadequate.  
2 - Funding comes from the .5% (1/2 percent) sales tax revenue.  
3 - Property and sales tax increment.