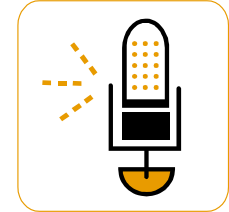


ERP Fact Sheet

August 3, 2007

City of Topeka

The ability to streamline different processes and workflows.



Need for an ERP System

There are many reasons why the City needs an ERP system:

Currently, the City is using 1980s software technology, which is not comparable to ERP technology in terms of capabilities and efficiencies, best business practices and the specific business needs of the City.

The current system is highly customized. Customization leads to problems with the software when upgrades and patches are applied.

There are no standardized processes within the current system, resulting in

inefficient time usage, redundancy, and a sharp increase in error potential.

Basically, departments are relying on Microsoft Excel and Access to complete tasks and store information. This is inefficient and forces departments to do the same thing using different methods.

The current system only partially supports the reporting needs of many departments. This prevents the City from analyzing and tracking information.

Currently, there is a lack of timely data and reports to

support management analysis and decision making. The City has to rely on outdated information or utilize inefficient systems for reporting, thereby hampering the ability to meet requests from employees and constituents, which could support decision making.

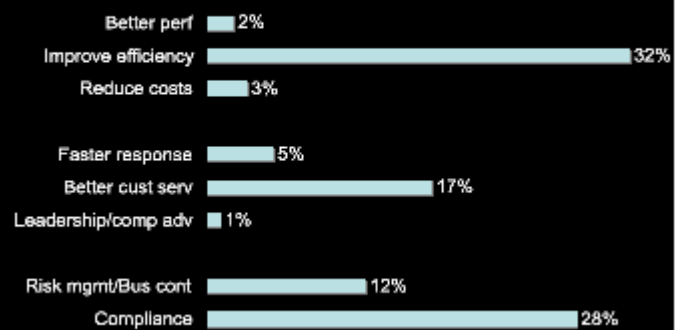
There are increasing demands for the City to provide services that are faster and more efficient, as well as to accommodate complex reporting requests. Software systems currently in place do not allow for this.

The current system's lack of integration across disparate subsystems results in a great deal of inefficiency, duplicate data entry, and lack of data integrity. A new system would turn the current patchwork of subsystems into a fully integrated system that allows for single-point data entry, information sharing, better data analysis capabilities, quick turnaround for information requests and a high degree of data integrity.

There is uncertainty regarding the future of the current software vendor product line (HTE), and the existing AS/400 hardware is at the end of its life cycle



What is the most significant business driver for your organization?



Source: State and Local Key Trends and Business Drivers (study was done by AIIIM)