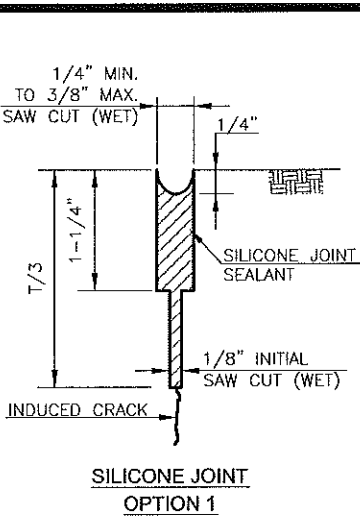
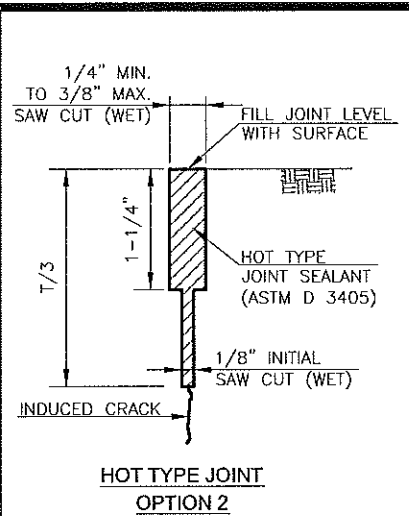


DETAIL A

6" INTEGRAL CURB
 Ø 1-1/2" FOR DRIVE ENTRANCES
 AND 3/4" FOR SIDEWALK RAMPS.



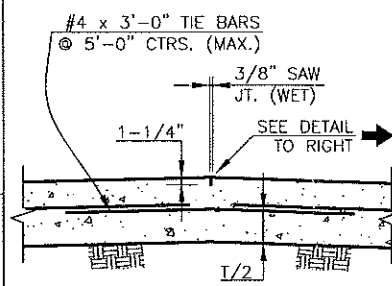
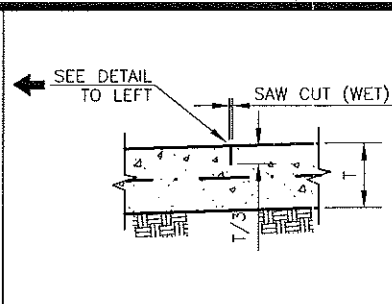
**SILICONE JOINT
 OPTION 1**



**HOT TYPE JOINT
 OPTION 2**

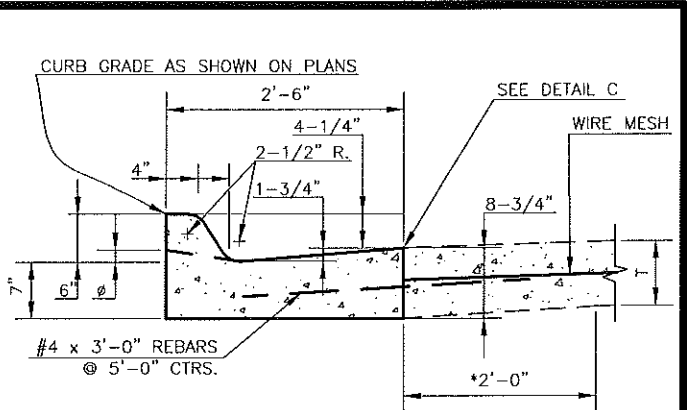
DETAIL B

TRANSVERSE AND LONGITUDINAL CONTRACTION JOINTS



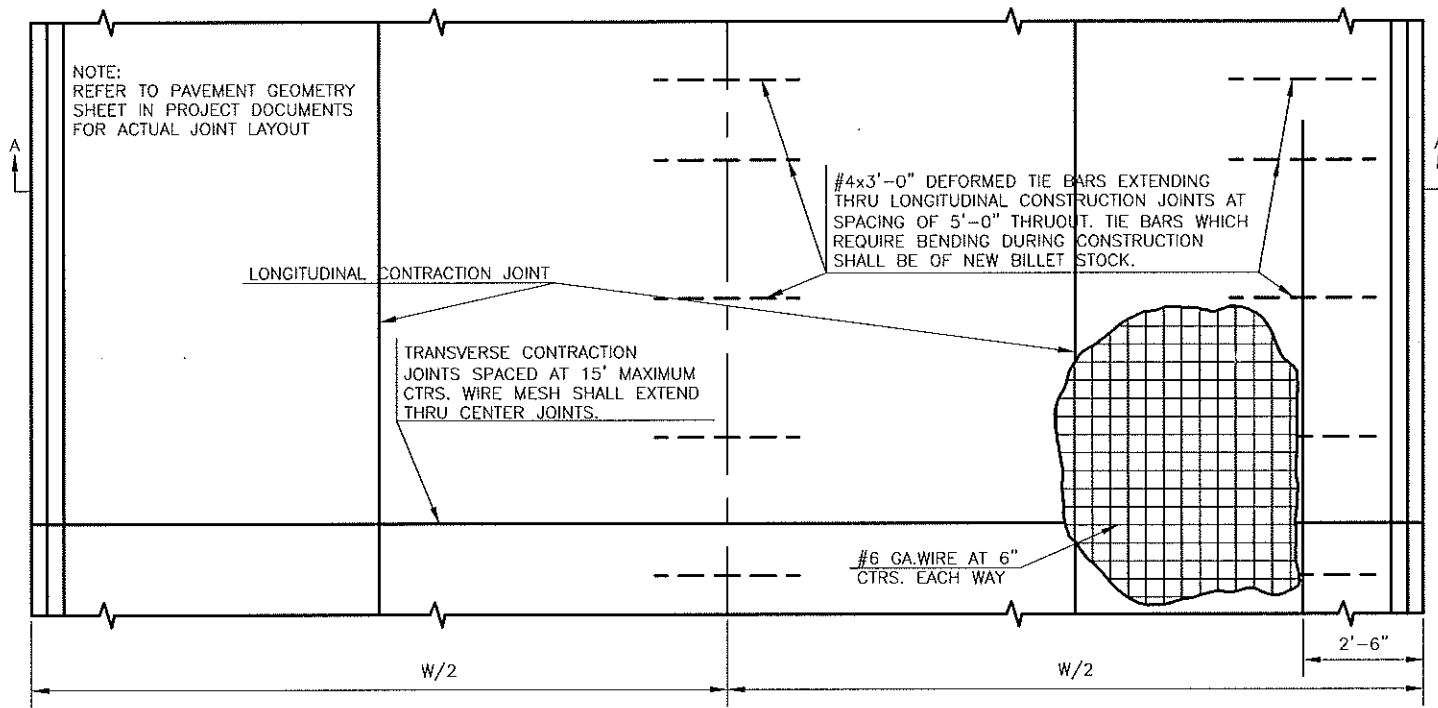
DETAIL C

TRANSVERSE AND LONGITUDINAL BUTT JOINTS
 NOTE: AT THE BEGINNING AND END OF THE PAVEMENT ON ANY GIVEN PROJECT A CONSTRUCTION JOINT AS OUTLINED IN THE STANDARD SPECIFICATIONS AND SHOWN ABOVE SHALL BE USED UNLESS THE PAVEMENT ABUTS A RIGID SURFACE. THE HEADER SHALL BE REMOVED AND THE TIE BARS BENT INTO THE GROOVE AT RIGHT ANGLES TO THE CENTERLINE OF THE PAVEMENT.



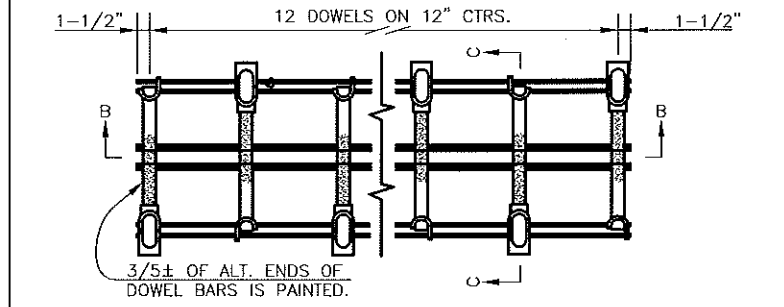
DETAIL D

* THE CONTRACTOR HAS THE OPTION OF MAINTAINING T OR TRANSITIONING AS SHOWN AT NO ADDITIONAL COST TO OWNER.
 Ø 1-1/2" FOR DRIVE ENTRANCES AND 3/4" FOR SIDEWALK RAMPS.



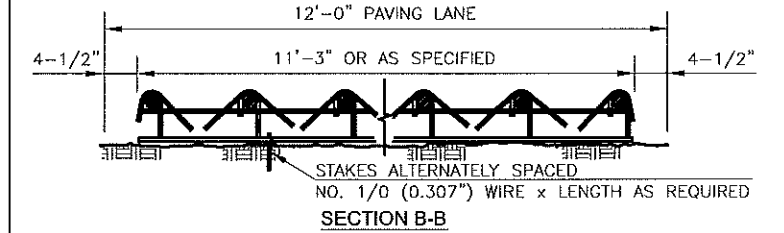
PLAN VIEW

NOTE: STANDARD LANE WIDTH = 11'-0"

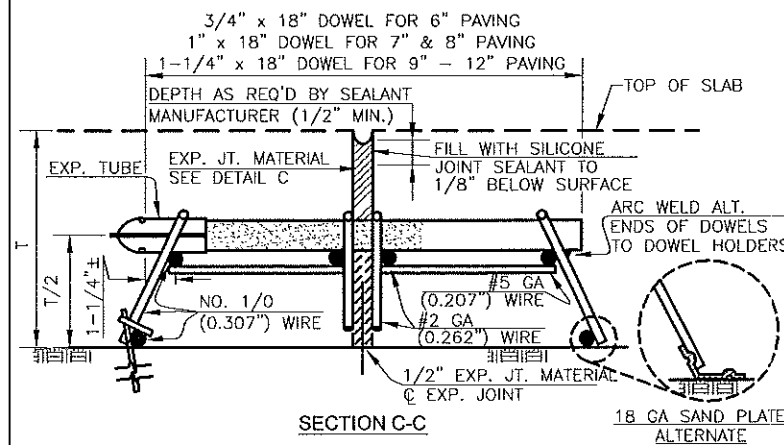


**PLAN VIEW OF WELDED
 EXPANSION JOINT ASSEMBLY**

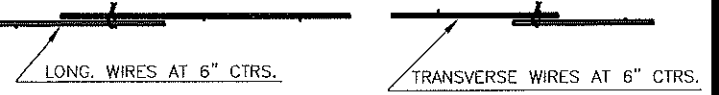
NOTES: 1. DOWELS, PLAIN ROUND PER A.S.T.M. A-615, GRADE 40 OR AS SPECIFIED.
 2. UNIT-WIRED TOGETHER FOR QUICK DISASSEMBLE AND PLACEMENT OF EXPANSION AND FILLER IN FIELD.
 3. ALL WIRE SIZES SHOWN ARE MINIMUM. DOWELS, PLAIN ROUND PER A.S.T.M. A-615, GRADE



SECTION B-B

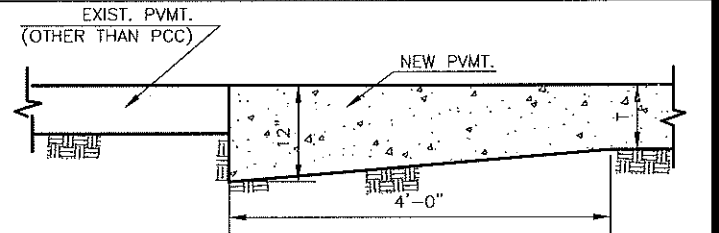


SECTION C-C



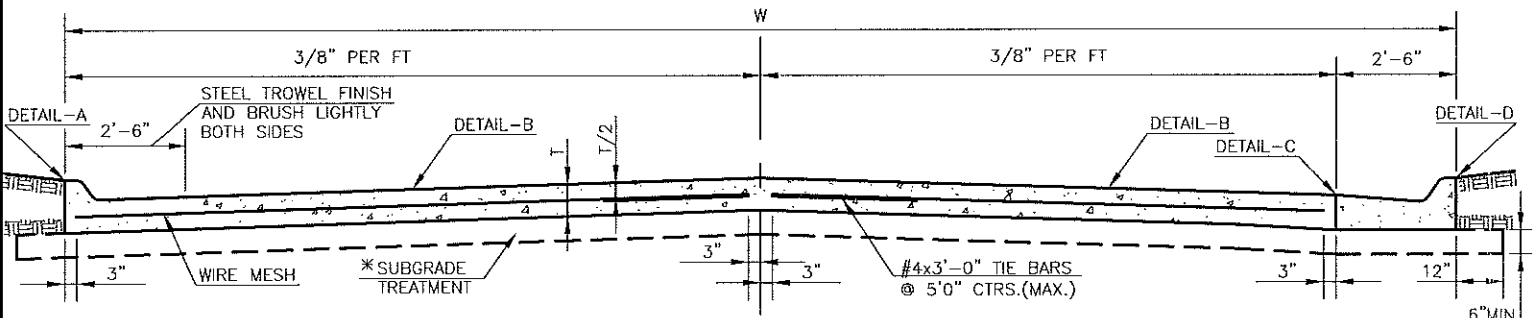
DETAIL OF LAP WIRE MESH

NOTE: THE LAP WIRE SHALL EXTEND BEYOND THE FIRST TRANSVERSE WIRE OF EACH SHEET. THE SHEET SHALL BE WIRED SECURELY AT THE EDGES AND AT INTERVALS NOT TO EXCEED 2'-6" FOR THE FULL WIDTH OF THE SHEET. APPROX. WEIGHT OF WIRE MESH = 42 LBS./100 SQ. FT. OTHER METHODS FOR FASTENING THE SHEETS OF WIRE MESH AT THE LAPS MAY BE USED WITH THE APPROVAL OF THE ENGINEER.



DETAIL OF JOINT AT EXISTING PAVEMENT

NOTES: 1. SAND IS NOT AN APPROVED FILL OR SUBGRADE MATERIAL.
 2. WHERE NEW PAVEMENT ABUTS EXISTING PCC PAVEMENT, THICKENED SECTION SHALL BE ELIMINATED AND 1" DIA. SMOOTH DOWELS SHALL BE PLACED @ 12" CENTERS. THE DOWELS SHALL BE ARRANGED SIMILAR TO SECTION C-C WITH THE EXPANSION TUBE IN THE NEW PAVEMENT.



TYPICAL PAVEMENT SECTION A-A

* SUBGRADE TREATMENT PER GEOTECHNICAL REPORT.

NOTE: COMBINED CURB AND GUTTER OR INTEGRAL CURB MAY BE USED WITH CONCRETE PAVEMENT CONSTRUCTION AS DETERMINED BY THE CITY/COUNTY ENGINEER. SEE TYPICAL PAVEMENT SECTION ABOVE.

NO.	DATE	REVISION	BY	APP'D
3	March 2010	Eliminated keyed joint at Typical Section	DHS SB	
2	Dec. 2009	Eliminated keyed joints	DHS SB	
1	Feb. 2008	Mod. Det.'s B,C&D and Sect.'s A-A&D-D	DHS SB	

DRAWN BY: *mm/mc*
 APP'D BY: *R. Anthony King*



**SHAWNEE COUNTY, KANSAS
 PUBLIC WORKS DEPARTMENT**
 1515 NW SALINE
 TOPEKA, KS 66618
 (785) 233-7702



STANDARD DETAILS

**CONCRETE PAVEMENT
 DETAILS**
 (DT-002)

DATE: Month Year
 SHEET: X of X
 PROJ.: X-XXXXXX