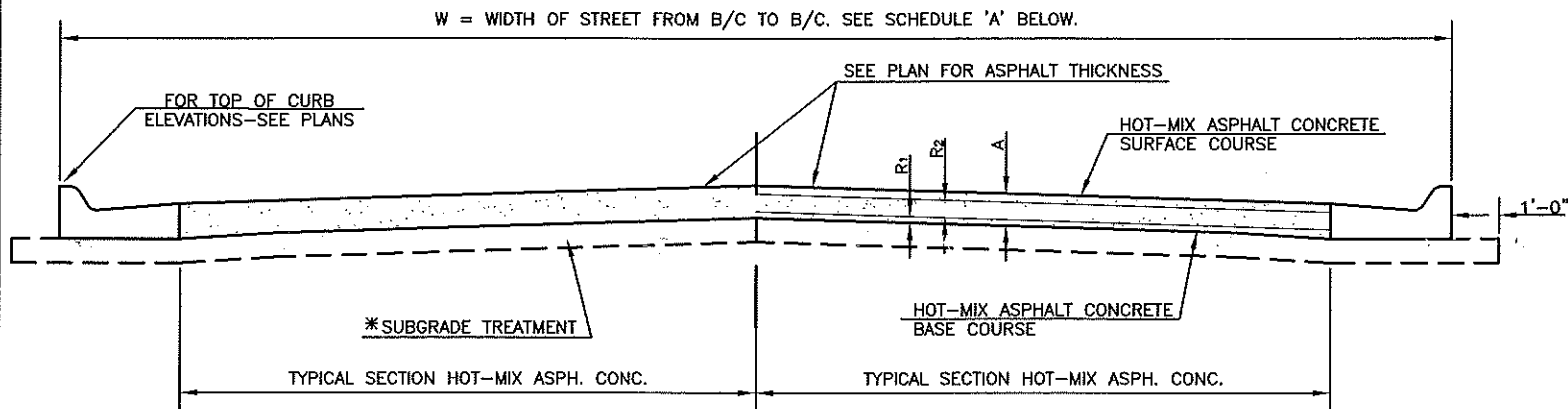


**PLAN**

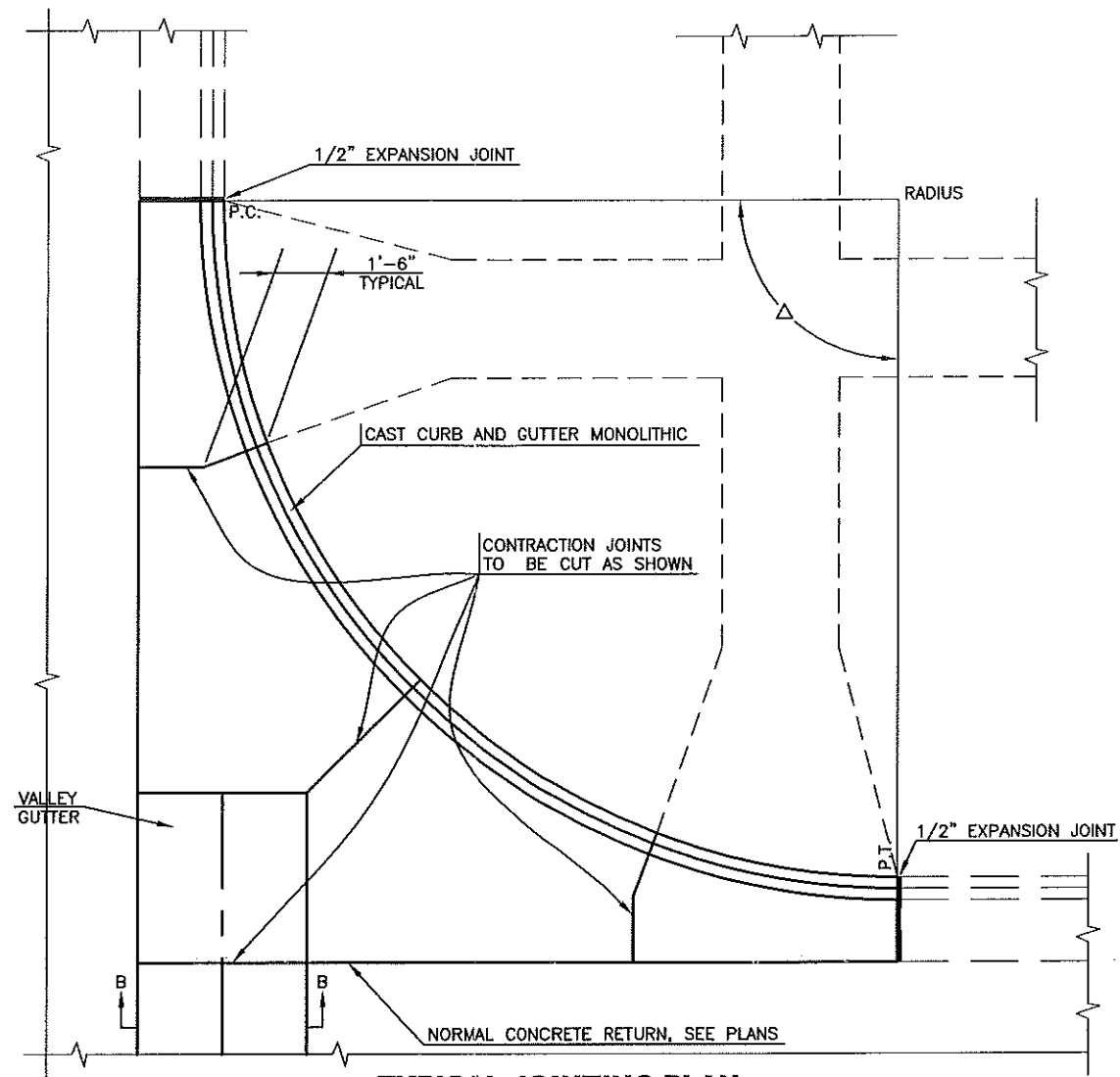


TYPICAL SECTION HOT-MIX ASPH. CONC. PAVE  
SECTION A-A

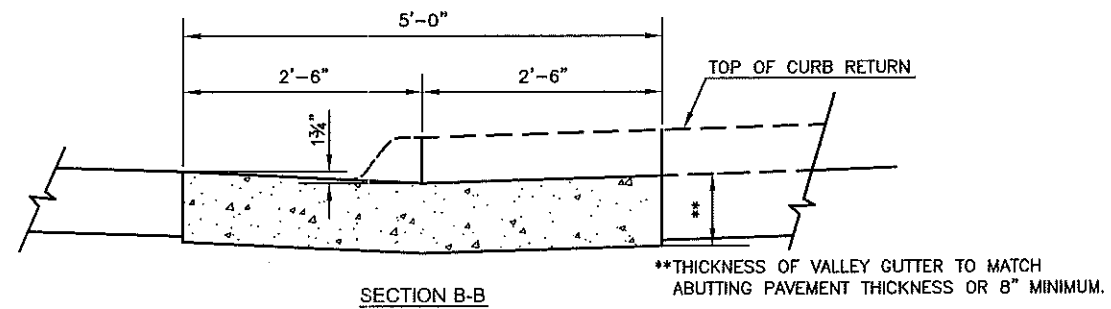
**PAVEMENT DETAILS**

\*SUBGRADE TREATMENT PER GEOTECHNICAL REPORT

SCHEDULE 'A'						
STREET	FROM	TO	W	R <sub>1</sub>	R <sub>2</sub>	A



**TYPICAL JOINTING PLAN**



**VALLEY GUTTER DETAILS**

- NOTES:
1. PAY LENGTH OF VALLEY GUTTER IS FROM P.C. TO P.C. ACROSS STREET INTERSECTION.
  2. PAY WIDTH OF VALLEY GUTTER IS 5'.
  3. PAY AREA OF VALLEY GUTTER IS PAY LENGTH X PAY WIDTH (SQ. YD.)
  4. PAY CURB AND GUTTER FROM P.C. TO P.T. AROUND RADIAL.
  5. NO ADDITIONAL PAYMENT FOR OTHER WORK AND MATERIALS REQUIRED TO COMPLETE RETURN AS DETAILED. SEE PLANS FOR TYPE OF RETURN TO BE CONSTRUCTED.
  6. SAND IS NOT AN APPROVED FILL OR SUBGRADE MATERIAL.
  7. WHERE VALLEY GUTTER ABUTS CONCRETE PAVEMENT, THE VALLEY GUTTER SECTION SHALL BE TIED TO THE CONCRETE PAVEMENT WITH #4 x 3'-0" DEFORMED TIE BARS AT 5'-0" CENTERS.
  8. WHERE VALLEY GUTTER IS CONSTRUCTED ADJACENT TO NEW ASPHALT PAVEMENT, THE CONTRACTOR MAY, AT THEIR OPTION, CONSTRUCT A CONTINUOUS ASPHALT PAVEMENT SECTION THROUGH THE VALLEY GUTTER AREA, FOLLOWED BY SAWCUTTING AND REMOVING THE ASPHALT STRIP FOR CONSTRUCTION OF THE VALLEY GUTTER SECTION. NO PAY ADJUSTMENT SHALL BE MADE FROM PLAN QUANTITIES FOR THE ADDITIONAL ASPHALT PAVEMENT THAT IS REMOVED. SAWCUTS SHALL BE FULL DEPTH. THE SUBGRADE MUST MEET COMPACTION REQUIREMENTS IN THE REMOVAL AREA PRIOR TO PLACEMENT OF THE VALLEY GUTTER.

NO.	DATE	REVISION	BY	APP'D
2	Dec. 2009	Added to Valley Gutter Details	DHS SB	
1	Feb. 2008	Mod. Typ. Jt. Plan & Pgmt. Det.	DHS SB	

DRAWN BY: *zm/mc*  
APP'D BY: *F. Clumby*



**SHAWNEE COUNTY, KANSAS**  
**PUBLIC WORKS DEPARTMENT**  
1515 NW SALINE  
TOPEKA, KS 66618  
(785) 233-7702



STANDARD DETAILS

**ASPHALT CONCRETE PAVEMENT DETAILS**  
(DT-001)

DATE: Month Year  
SHEET: X of X  
PROJ.: X-XXXXXX.XX