

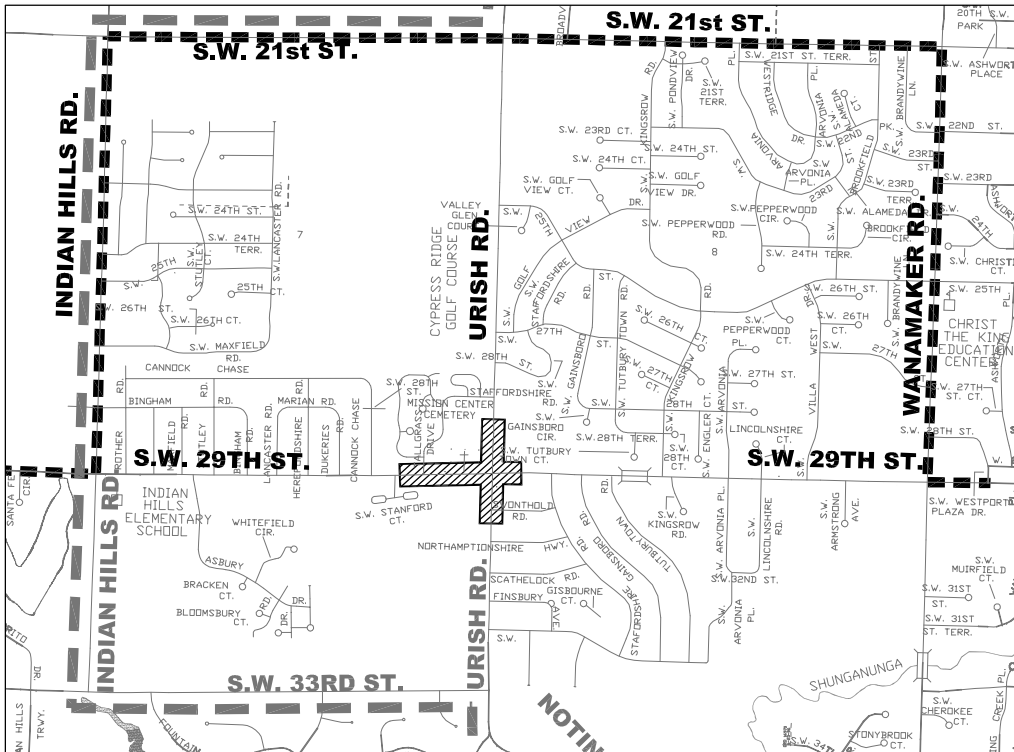
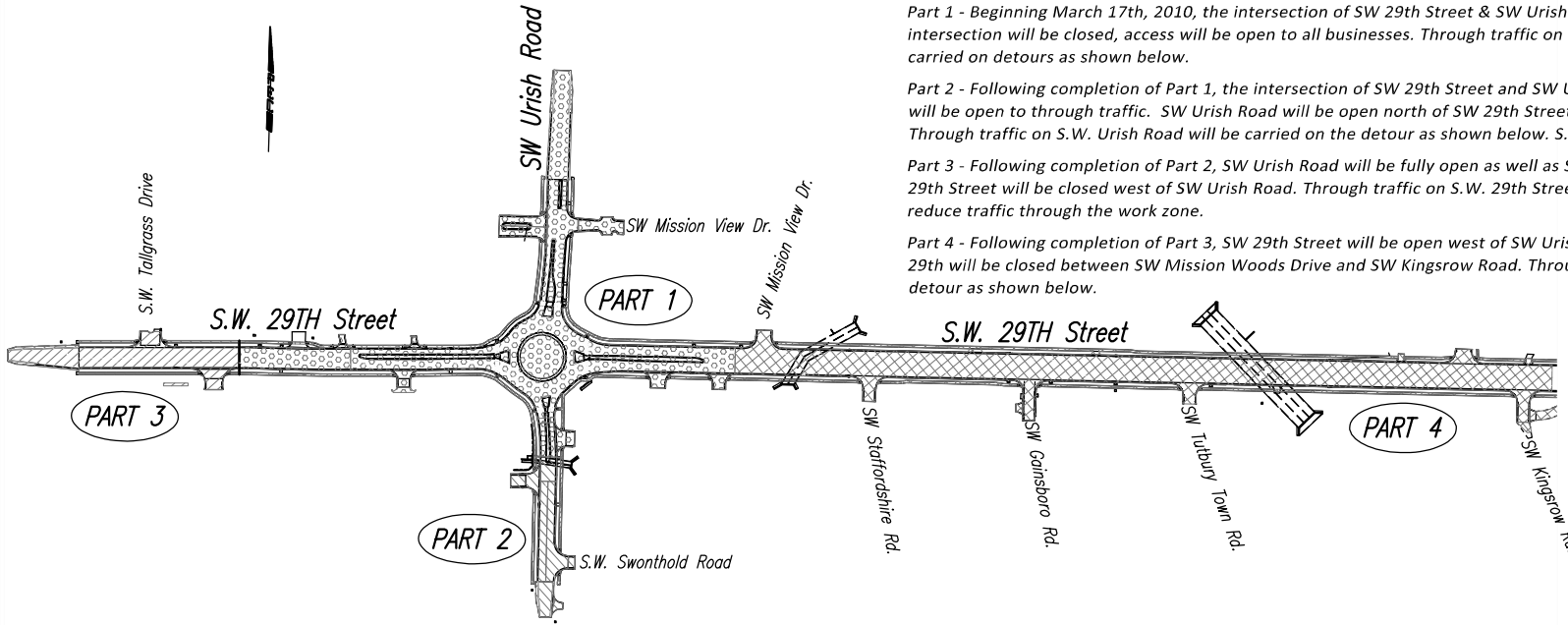
YEAR 2010 CONSTRUCTION

Part 1 - Beginning March 17th, 2010, the intersection of SW 29th Street & SW Urish Road will be closed to traffic. Although the intersection will be closed, access will be open to all businesses. Through traffic on both S.W. 29th Street and S.W. Urish Road will be carried on detours as shown below.

Part 2 - Following completion of Part 1, the intersection of SW 29th Street and SW Urish Road will be opened to traffic. SW 29th Street will be open to through traffic. SW Urish Road will be open north of SW 29th Street, but closed to traffic south of SW 29th Street. Through traffic on S.W. Urish Road will be carried on the detour as shown below. S.W. 29th Street will not be detoured during Part 2.

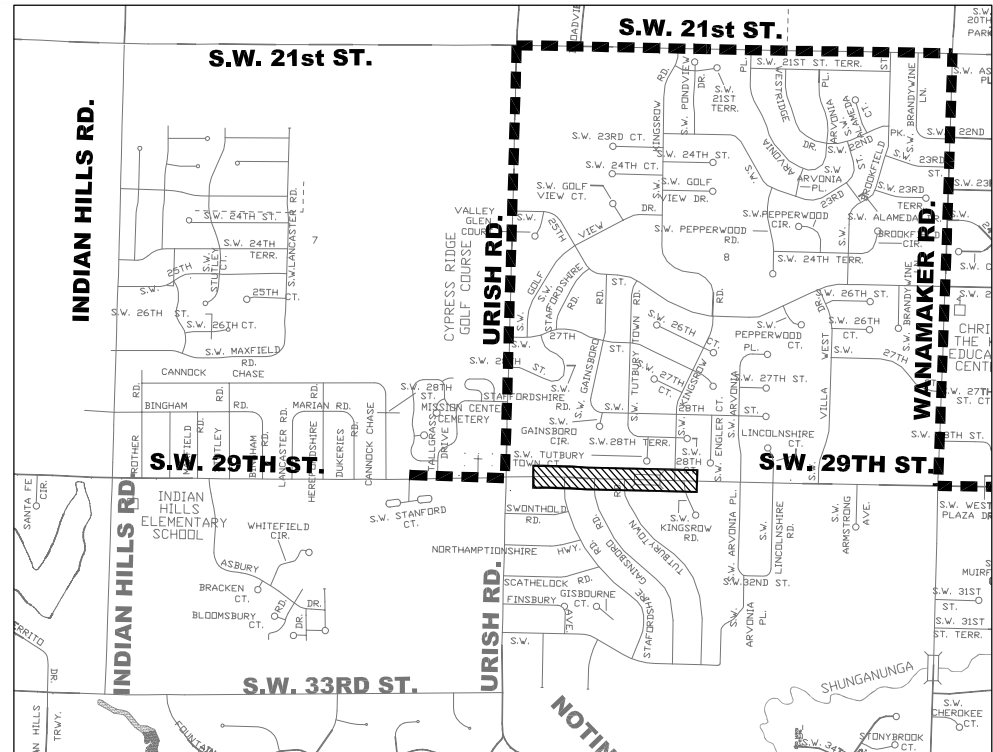
Part 3 - Following completion of Part 2, SW Urish Road will be fully open as well as SW 29th Street to the east of SW Urish Road. SW 29th Street will be closed west of SW Urish Road. Through traffic on S.W. 29th Street will be carried on the detour as shown below to reduce traffic through the work zone.

Part 4 - Following completion of Part 3, SW 29th Street will be open west of SW Urish Road and all of SW Urish Road will be open. SW 29th Street will be closed between SW Mission Woods Drive and SW Kingsrow Road. Through traffic on S.W. 29th Street will be carried on the detour as shown below.



29TH STREET & URISH ROAD PART 1, 2, & 3 DETOUR

- ■ ■ ■ S.W. 29th Street Detour (During Parts 1 & 3)
- ▬▬▬▬ Urish Road Detour (During Parts 1 & 2)



29TH STREET PART 4 DETOUR

- ■ ■ ■ S.W. 29th Street Detour (During Part 4)